

CERTIFICATE OF LOCATION OF GOVERNMENT CORNER

County of Anoka

State of Minnesota

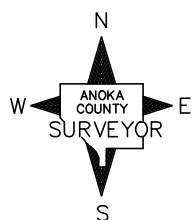
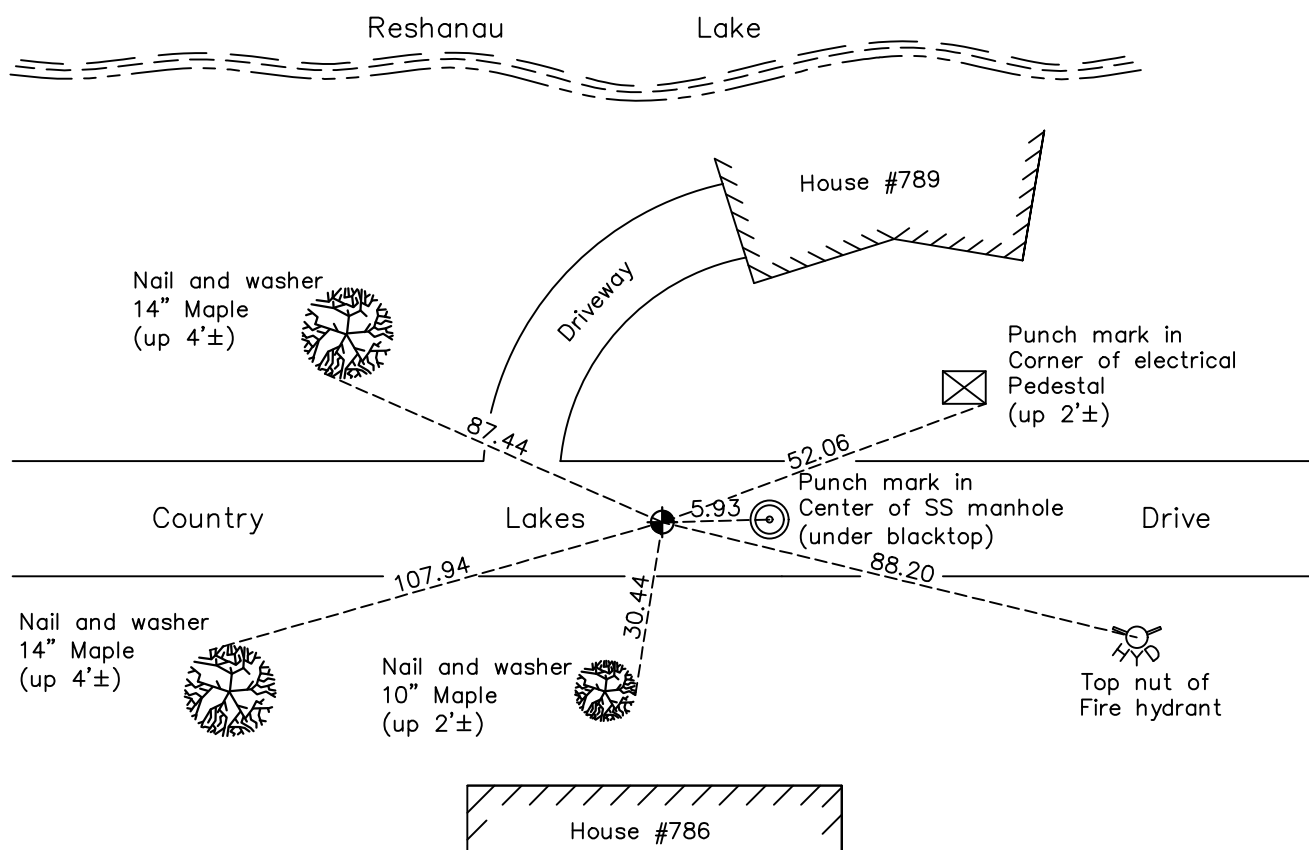
Witness Corner of Sec. 28 Township 31 Range 22
(on west line of section)

On the 27th day of March, 1968, the described corner was evidenced by area resurvey

and to perpetuate the location of said corner, at the exact location thereof, a permanent marker was placed consisting of a cast iron monument

AND on the 7th day of June, 2021, said permanent marker was found flush with the surface and the ties were updated.

Updated reference ties are as shown below.



Revision Date
8/2/21

N.A.D. 1983 Coordinates
 (1996 Adjustment)

County Project Coordinates	
Northing	<u>139705.9498</u>
Easting	<u>542515.8676</u>
Date	<u>4/16/96</u>

I hereby certify that this United States public land survey monument record is correct and complete to the best of my knowledge and belief.
David M Zieglmeier Date 8/30/21
 David Zieglmeier Anoka County Surveyor
 Minnesota License Number 46179

HISTORY OF GOVERNMENT CORNER

Page No. 110

County of Anoka

State of Minnesota

Witness Corner of Sec. 28 Township 31 Range 22
(on west line of section)

CORNER HISTORY:

March 11, 1968 – Set Bridge Spike on south side of Reshanau Lake using area resurvey and established ties to spike.

March 27, 1968 – Replaced Bridge Spike with a Cast Iron Monument and updated ties.

July 5, 1973 – Found Cast Iron Monument and updated ties.

June 2, 1977 – Found Cast Iron Monument and updated ties. Set a sign and post $1'\pm$ north of monument.

August 12, 1980 – Found Cast Iron Monument and updated ties.

July 28, 1986 – Found Cast Iron Monument and updated ties.

October 28, 1991 – Found Cast Iron Monument and updated ties.

November 22, 1994 – Updated ties and removed Cast Iron Monument prior to road construction.

December 15, 1995 – Set 1/2" Iron Pipe in centerline of street after road construction using ties. Updated ties.

April 16, 1996 – Replaced 1/2" Iron Pipe with a Cast Iron Monument and established NAD 1983 (1996 Adjustment) Anoka County Project Coordinates by Static GPS methods. Updated ties.

May 19, 2011 – Replaced broken off Cast Iron Monument down $0.5'\pm$ with a new Cast Iron Monument and updated ties.

December 13, 2016 – Found Cast Iron Monument flush with the surface and updated ties.

June 7, 2021 – Found Cast Iron Monument flush with the surface and updated ties.