

CERTIFICATE OF LOCATION OF GOVERNMENT CORNER

County of Anoka

State of Minnesota

Witness Corner of Sec. 28 Township 31 Range 22

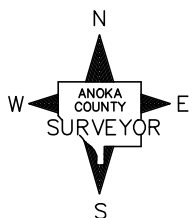
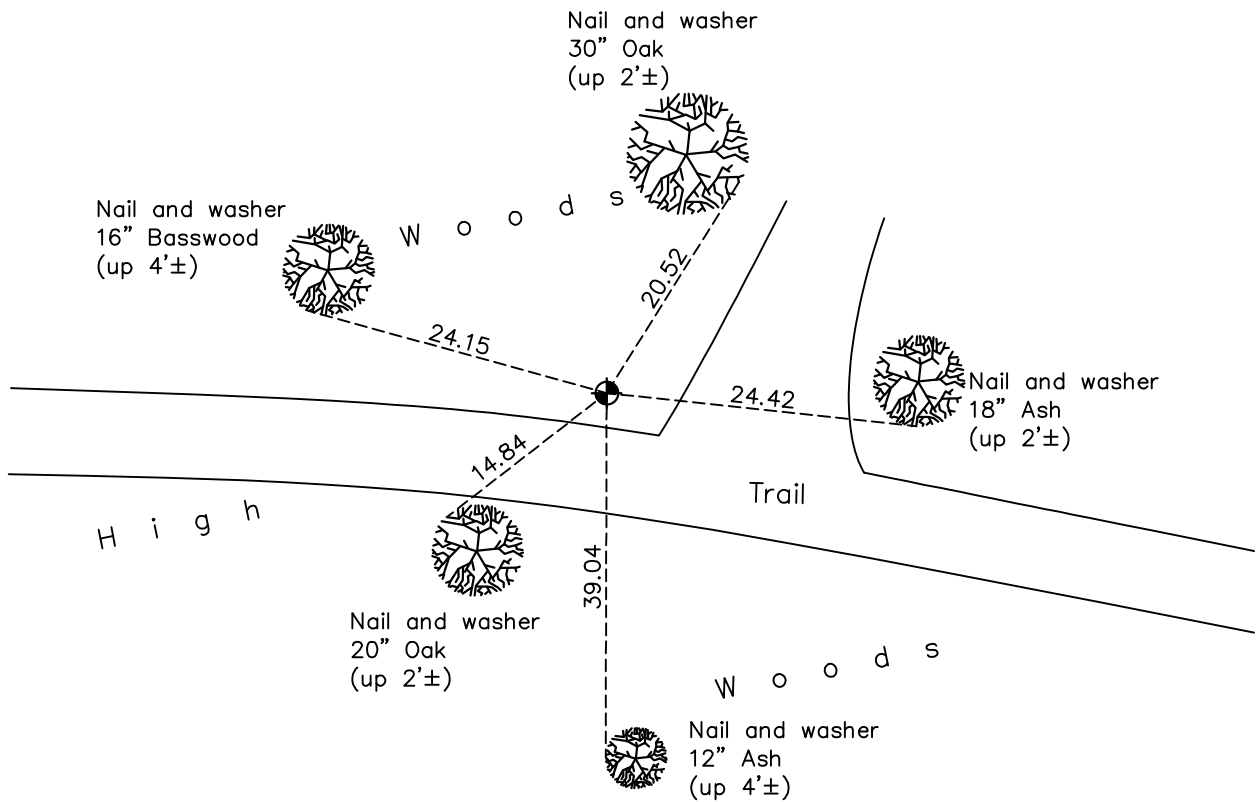
(On east line of section and south side of Ward Lake)

On the 6th day of February, 1969, the described corner was evidenced by area resurvey

and to perpetuate the location of said corner, at the exact location thereof, a permanent marker was placed consisting of a cast iron monument

AND on the 6th day of May, 2021, said permanent marker was found down 0.2'± and the ties were updated

Updated reference ties are as shown below.



Revision Date
8/2/21

N.A.D. 1983 Coordinates
 (1996 Adjustment)

County Project Coordinates	
Northing	<u>141806.9068</u>
Easting	<u>547752.3960</u>
Date	<u>3/15/06</u>

I hereby certify that this United States public land survey monument record is correct and complete to the best of my knowledge and belief.

David M Zieglmeier Date 8/30/21

David Zieglmeier Anoka County Surveyor
 Minnesota License Number 46179

HISTORY OF GOVERNMENT CORNER

Page No. 111

County of Anoka

State of Minnesota

Witness Corner of Sec. 28 Township 31 Range 22
(On east line of section and south side of Ward Lake)

CORNER HISTORY:

February 6, 1969 – Set Bridge Spike on South side of Ward Lake. Established ties to monument.

September 23, 1969 – Bridge Spike not found. Set Cast Iron Monument flush with the surface using ties.

July 20, 1973 – Found Cast Iron Monument and updated ties.

June 9, 1977 – Found Cast Iron Monument and updated ties.

June 30, 1992 – Found Cast Iron Monument and updated ties.

July 30, 1996 – Found Cast Iron Monument and updated ties.

February 12, 1999 – Found Cast Iron Monument with a sign and post on the north side and updated ties.

August 25, 2010 – Found Cast Iron Monument flush with the surface with a sign and post on the east side. Updated ties.

December 12, 2016 – Found Cast Iron Monument down 0.2'±, the sign and post was removed and leaning against a tree. Updated ties.

May 6, 2021 – Found Cast Iron Monument down 0.2'±, verified location of corner by VRS GPS methods, updated ties.