

CERTIFICATE OF LOCATION OF GOVERNMENT CORNER

County of Anoka

State of Minnesota

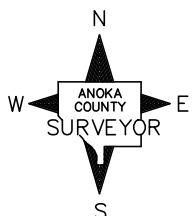
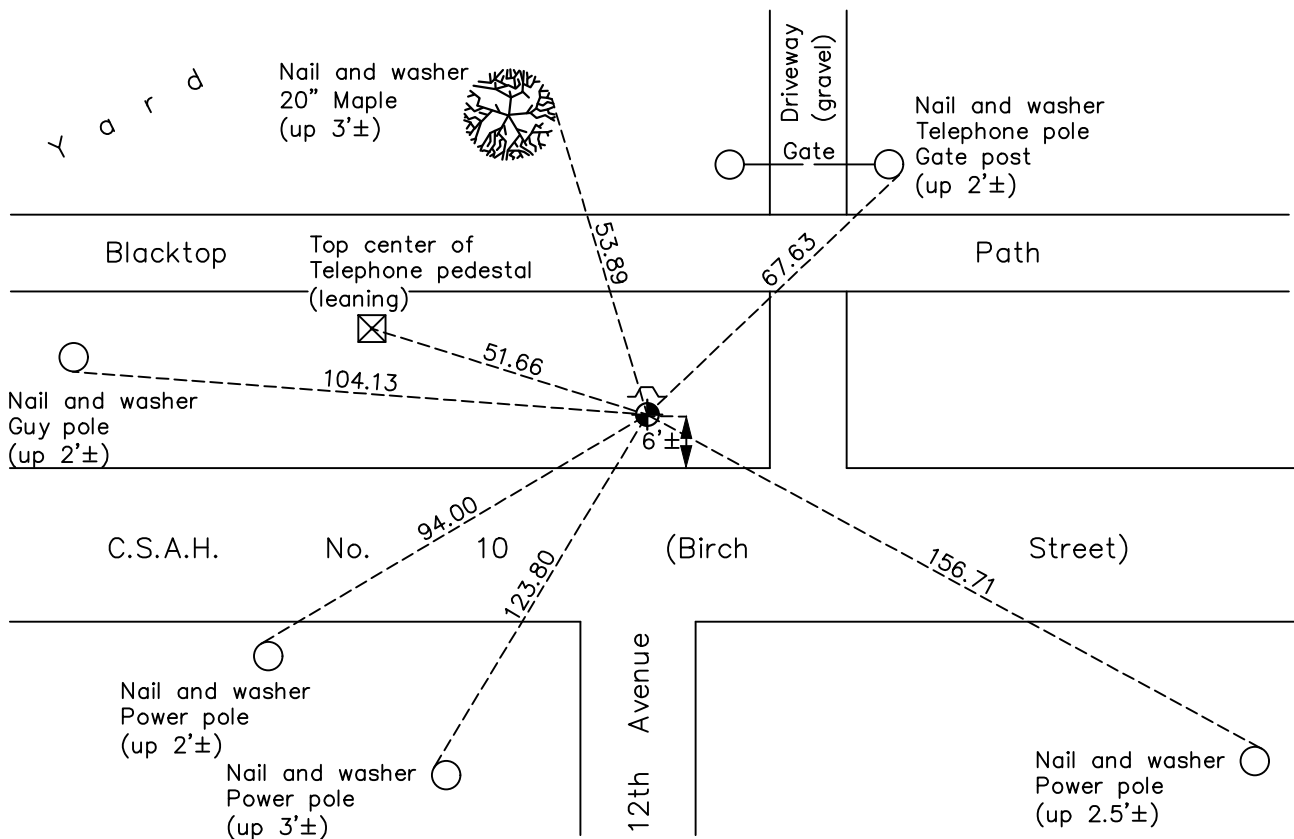
East 1/4 Corner of Sec. 28 Township 31 Range 22

On the 22nd day of April, 1968, the described corner was evidenced by area resurvey

and to perpetuate the location of said corner, at the exact location thereof, a permanent marker was placed consisting of a cast iron monument in bottom of ditch

AND on the 22nd day of April, 2021, said permanent marker was found down 0.4'± and the ties were updated

Updated reference ties are as shown below.



Revision Date
8/2/21

N.A.D. 1983 Coordinates
 (1996 Adjustment)

County Project Coordinates	
Northing	<u>140363.4581</u>
Easting	<u>547768.5096</u>
Date	<u>3/17/97</u>

I hereby certify that this United States public land survey monument record is correct and complete to the best of my knowledge and belief.
David M Zieglmeier Date 8/30/21
 David Zieglmeier Anoka County Surveyor
 Minnesota License Number 46179

HISTORY OF GOVERNMENT CORNER

Page No. 112

County of Anoka

State of Minnesota

East 1/4 Corner of Sec. 28 Township 31 Range 22

CORNER HISTORY:

April 22, 1968 – Set Cast Iron Monument flush with the surface and on traveled centerline using resurvey of tract in NE quadrant. Established ties to monument.

June 25, 1973 – Found Cast Iron Monument and updated ties.

June 1, 1977 – Found Cast Iron Monument and set P.K. nails 2.00' north and east of monument. Updated ties.

March 29, 1979 – Set Construction ties.

August 27, 1979 – Set Construction ties from Cast Iron Monument and updated ties.

October 3, 1979 – Set additional construction ties prior to road construction.

December 29, 1981 – Set Cast Iron Monument flush with the surface and in bottom of ditch after road construction using construction ties. Updated ties.

July 17, 1986 – Found Cast Iron Monument leaning east. Reset Cast Iron Monument down 1'± using ties and updated ties.

August 27, 1991 – Found Cast Iron Monument and updated ties.

June 26, 1996 – Found Cast Iron Monument and updated ties.

March 17, 1997 – Found Cast Iron Monument flush with the surface in the bottom of the ditch with a sign and post. Established NAD 1983 (1996 Adjustment) Anoka County Project Coordinates by Static GPS methods and updated ties.

July 9, 2010 – Found Cast Iron Monument down 0.4'± in the bottom of the ditch with a sign and post on the north side. Updated ties.

December 12, 2016 – Found Cast Iron Monument down 0.4'± in the bottom of the ditch and updated ties. Sign and post not found.

April 22, 2021 – Found Cast Iron Monument down 0.4'± in the bottom of the ditch, verified location of corner by VRS GPS methods, and updated ties. New sign and post on N. side of monument.