

CERTIFICATE OF LOCATION OF GOVERNMENT CORNER

County of Anoka

State of Minnesota

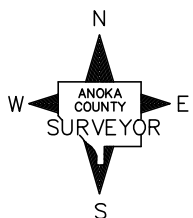
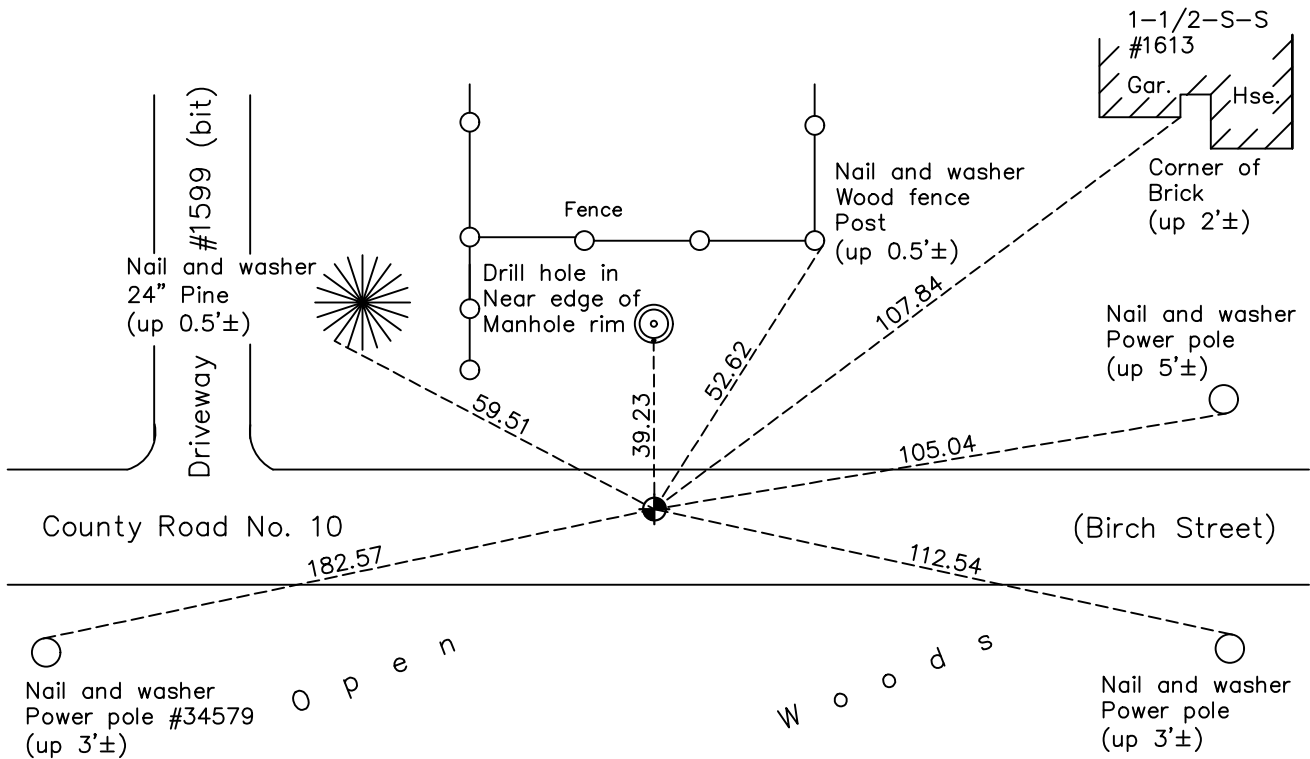
West 1/4 Corner of Sec. 26 Township 31 Range 22

On the 10th day of April, 1962, the described corner was evidenced by a concrete monument and Cartwright ties

and to perpetuate the location of said corner, at the exact location thereof, a permanent marker was placed consisting of a cast iron monument

AND on the 11th day of May, 2020, said permanent marker was replaced CIM flush with the surface and the ties were updated. Monument is 0.5'± north of white line of westbound lane.

Updated reference ties are as shown below.



Revision Date
8/2/21

N.A.D. 1983 Coordinates
 (1996 Adjustment)

County Project Coordinates	
Northing	140395.6915
Easting	553043.0535
Date	8/21/00

I hereby certify that this United States public land survey monument record is correct and complete to the best of my knowledge and belief.
David M Zieglmeier Date 8/30/21
 David Zieglmeier Anoka County Surveyor
 Minnesota License Number 46179

HISTORY OF GOVERNMENT CORNER

Page No. 113

County of Anoka

State of Minnesota

West 1/4 Corner of Sec. 26 Township 31 Range 22

CORNER HISTORY:

March 16, 1944 – Cartwright found Concrete Monument. Established ties to monument.

April 10, 1962 – Found 6" Square Concrete Monument with the top broken off lying in the ditch on the south side of the road. Set Cast Iron Monument using two remaining Cartwright ties. Monument is 0.2' east and 0.25' north of location using ties. Updated ties.

June 23, 1965 – Found Cast Iron Monument down 0.5'± and updated ties.

August 29, 1969 – Replaced broken Cast Iron Monument down 0.4'± with a new Cast Iron Monument set flush with the surface and updated ties. Set P.K. nails 2.00' north and east of monument.

June 25, 1973 – Found Cast Iron Monument and updated ties.

June 1, 1977 – Found Cast Iron Monument and updated ties.

August 24, 1979 – Found Cast Iron Monument and set construction ties.

December 29, 1981 – Updated ties to Cast Iron Monument, flush with the surface and on north edge of blacktop, after road construction.

July 16, 1986 – Found Cast Iron Monument and updated ties.

June 21, 1996 – Found Cast Iron Monument and updated ties.

March 25, 1998 – Found Cast Iron Monument and updated ties.

March 13, 2000 – Set construction ties and removed Cast Iron Monument prior to road construction.

August 21, 2000 – Set Cast Iron Monument after road construction using construction ties and established NAD 1983 (1996 Adjustment) Anoka County Project Coordinates by Static GPS methods. Updated ties.

July 14, 2010 – Found Cast Iron Monument flush with the surface and updated ties. Monument is on north white line of westbound lane.

December 20, 2016 – Found Cast Iron Monument flush with the surface and updated ties. Monument is 0.5'± north of the white line of westbound lane.

May 11, 2020 – Replaced Cast Iron Monument flush with the surface after const. Verified location of corner by VRS GPS methods and updated ties. Monument is 0.5'± north of the white line of westbound lane.