

CERTIFICATE OF LOCATION OF GOVERNMENT CORNER

County of Anoka

State of Minnesota

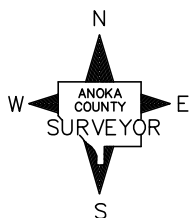
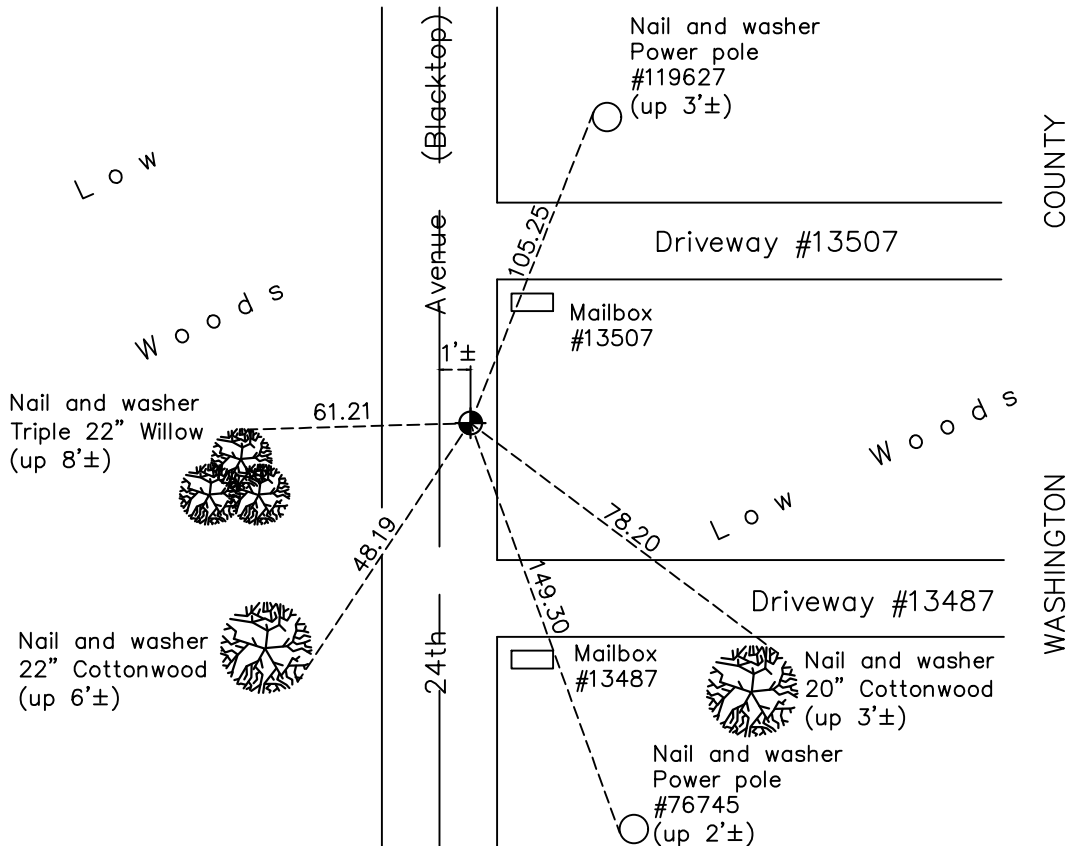
East 1/4 Corner of Sec. 25 Township 31 Range 22

On the 22nd day of March, 1973, the described corner was evidenced by a Washington County cast iron monument

and to perpetuate the location of said corner, at the exact location thereof, a permanent marker was placed consisting of the same cast iron monument

AND on the 22nd day of April, 2021, said permanent marker was found 1'± east of centerline and the ties were updated

Updated reference ties are as shown below.



Revision Date
8/2/21

N.A.D. 1983 Coordinates
(1996 Adjustment)

County Project Coordinates	
Northing	140345.1724
Easting	563550.7209
Date	4/08/98

I hereby certify that this United States public land survey monument record is correct and complete to the best of my knowledge and belief.
David M Zieglmeier Date 8/30/21
 David Zieglmeier Anoka County Surveyor
 Minnesota License Number 46179

HISTORY OF GOVERNMENT CORNER

Page No. 115

County of Anoka

State of Minnesota

East 1/4 Corner of Sec. 25 Township 31 Range 22

CORNER HISTORY:

March 22, 1973– Found Washington County Cast Iron Monument down 6"± and 4'± east of centerline town road and on fence to the east. Established ties to monument.

June 2, 1977 – Found Washington Cast Iron Monument and updated ties.

August 11, 1980 – Found Washington Cast Iron Monument and updated ties.

October 28, 1991 – Found Washington Cast Iron Monument and updated ties.

April 8, 1998 – Found Washington Cast Iron Monument and established NAD 1983 (1996 Adjustment) Anoka County Project Coordinates by Static GPS methods. Updated ties.

August 3, 2010 – Found 3/4" rebar down 0.8'± and 1'± east of centerline. Updated ties.

March 24, 2011 – Verified location of corner by Static GPS methods.

May 18, 2011 – Replaced partial Washington County Cast Iron Monument down 1.3'± and a rebar down 0.8'± with an Anoka County Cast Iron Monument after a discussion with the Washington County Surveyor. Updated ties.

May 23, 2011 – Verified location of corner by VRS GPS methods.

December 28, 2016 – Found Anoka County Cast Iron Monument 1' east of centerline and updated ties.

April 22, 2021 – Found Anoka County Cast Iron Monument 1' east of centerline, verified location of corner by VRS GPS methods and updated ties.