

CERTIFICATE OF LOCATION OF GOVERNMENT CORNER

County of Anoka

State of Minnesota

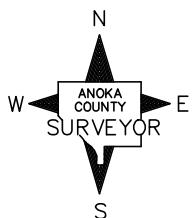
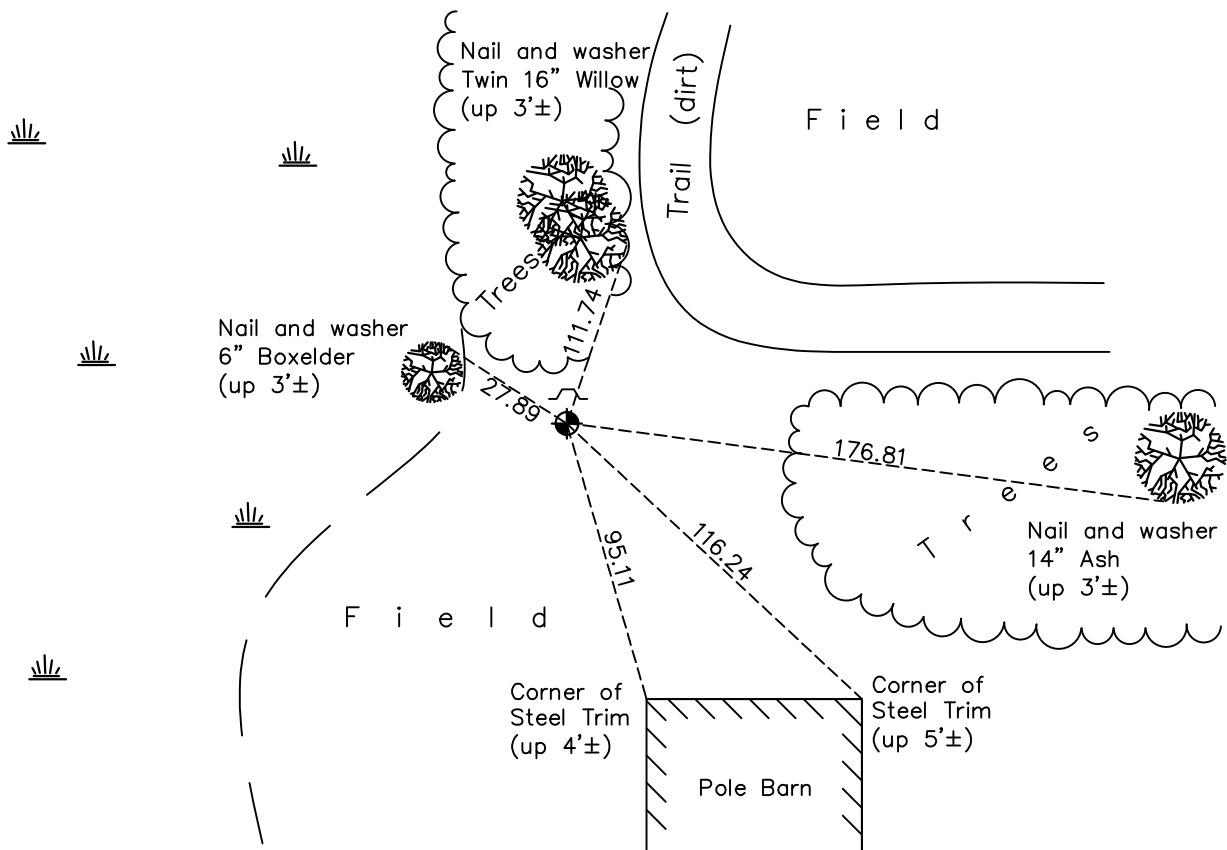
Southeast Corner of Sec. 25 Township 31 Range 22

On the 31st day of January, 1977, the described corner was evidenced by a 1 1/2" iron pipe

and to perpetuate the location of said corner, at the exact location thereof, a permanent marker was placed consisting of a cast iron monument with a Washington County sign and post on the north side

AND on the 22nd day of April, 2021, said permanent marker was found flush with the surface and the ties were updated. An Anoka County sign and post was found on the north side.

Updated reference ties are as shown below.



Revision Date
8/2/21

N.A.D. 1983 Coordinates
 (1996 Adjustment)

County Project Coordinates	
Northing	<u>137681.6497</u>
Easting	<u>563555.7045</u>
Date	<u>4/08/98</u>

I hereby certify that this United States public land survey monument record is correct and complete to the best of my knowledge and belief.
David M Zieglmeier Date 8/30/21
 David Zieglmeier Anoka County Surveyor
 Minnesota License Number 46179

HISTORY OF GOVERNMENT CORNER

Page No. 116

County of Anoka

State of Minnesota

Southeast Corner of Sec. 25 Township 31 Range 22

CORNER HISTORY:

January 31, 1977 – Found 1 1/2” Iron Pipe flush with the surface and with a steel post on the south side. Established ties to pipe.

April 22, 1977 – Replaced 1 1/2” Iron Pipe with a Cast Iron Monument. Sign and Post on the north side. Updated ties.

August 11, 1980 – Found Cast Iron Monument and updated ties.

November 8, 1990 – Found Washington County Cast Iron Monument with a Washington County sign and post on the north side and updated ties.

September 23, 1991 – Found Cast Iron Monument and updated ties.

July 10, 1996 – Found Cast Iron Monument and updated ties.

April 8, 1998 – Found Cast Iron Monument and established NAD 1983 (1996 Adjustment) Anoka County Project Coordinates by Static GPS methods. Updated ties.

September 14, 2010 – Found Cast Iron Monument and updated ties. An Anoka County sign and post was placed on the north side of monument.

December 28, 2016 – Found Cast Iron Monument flush with the surface and updated ties. An Anoka County sign and post was found on the north side.

April 22, 2021 – Found Cast Iron Monument flush with the surface verified location of corner by VRS GPS methods and updated ties. An Anoka County sign and post was found on the north side.