

CERTIFICATE OF LOCATION OF GOVERNMENT CORNER

County of Anoka

State of Minnesota

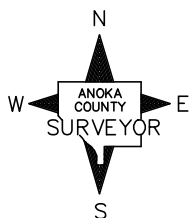
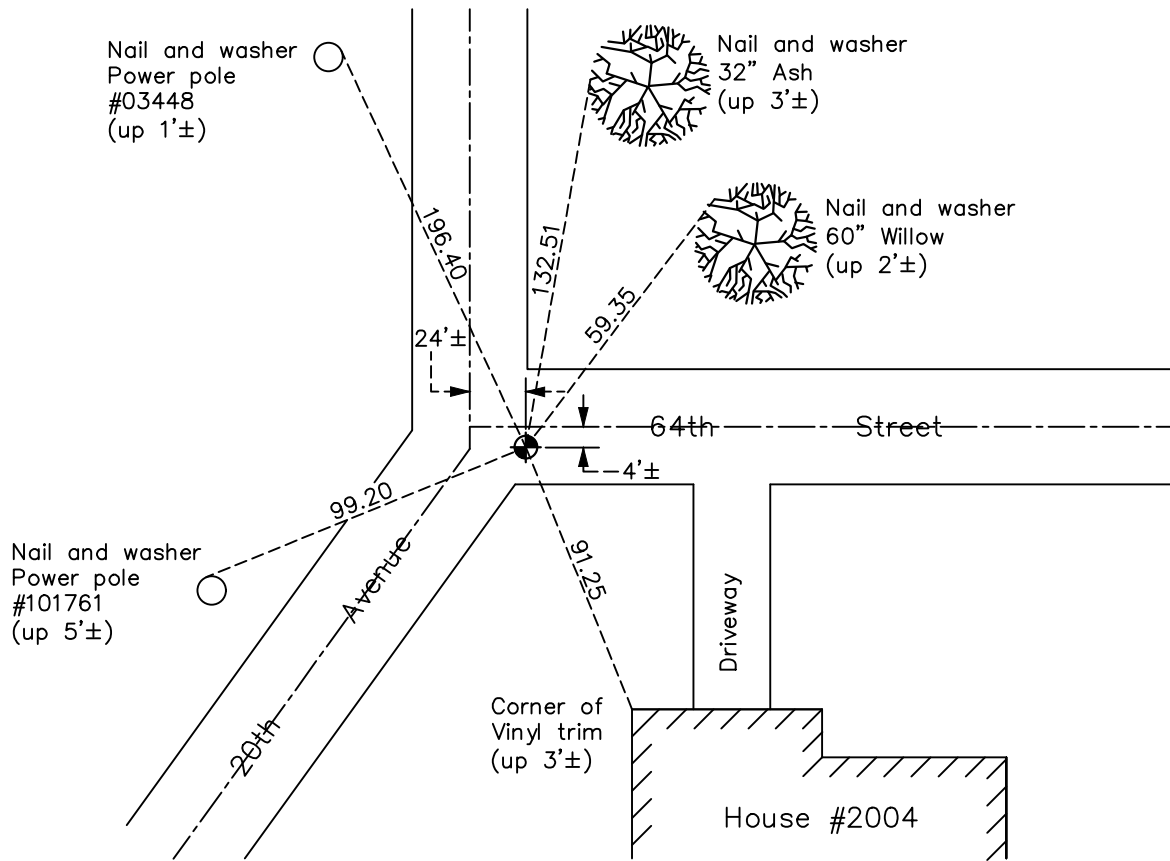
Northwest Corner of Sec. 36 Township 31 Range 22

On the 25th day of September, 1969, the described corner was evidenced by a 1" iron pipe

and to perpetuate the location of said corner, at the exact location thereof, a permanent marker was placed consisting of a cast iron monument

AND on the 22nd day of April, 2021, said permanent marker was found and the ties
were updated

Updated reference ties are as shown below.



Revision Date
8/2/21

N.A.D. 1983 Coordinates
(1996 Adjustment)

County Project Coordinates	
Northing	<u>137689.1817</u>
Easting	<u>558315.1748</u>
Date	<u>3/25/98</u>

I hereby certify that this United States public land survey monument record is correct and complete to the best of my knowledge and belief.

David M Zieglmeier Date 8/30/21

David Zieglmeier Anoka County Surveyor
Minnesota License Number 46179

HISTORY OF GOVERNMENT CORNER

Page No. 118

County of Anoka

State of Minnesota

Northwest Corner of Sec. 36 Township 31 Range 22

CORNER HISTORY:

June 27, 1946 – Cartwright found Concrete Monument. Established ties to monument.

April 6, 1962– All ties missing.

May 6, 1963 – Found 1/2" Reinforcing Rod down 2"±, dug deeper and found 1" Iron Pipe down 14"± and 0.22 ' south of Reinforcing Rod. Set 3/4" Iron Pipe down 2"± over 1" Iron Pipe and updated ties.

July 7, 1965 – Found Iron Pipe and updated ties.

September 25, 1969 – Replaced 1" Iron Pipe down 1.0'± with a Cast Iron Monument set down 0.5'±. Updated ties.

September 26, 1972 – Replaced broken Cast Iron Monument with a new Cast Iron Monument and updated ties.

May 14, 1973 – Found Cast Iron Monument and updated ties prior to road construction.

June 29, 1973 – Found Cast Iron Monument and updated ties.

June 2, 1977 – Found Cast Iron Monument and updated ties.

July 29, 1980 – Found Cast Iron Monument and updated ties.

July 28, 1992 – Raised Cast Iron Monument to flush with the surface and updated ties.

June 24, 1996 – Found Cast Iron Monument and updated ties.

March 25, 1998 – Found Cast Iron Monument and established NAD 1983 (1996 Adjustment) Anoka County Project Coordinates by Static GPS methods. Updated ties.

June 20, 2011 – Raised Cast Iron Monument to 0.1'± below the surface after road construction. Updated ties.

December 19, 2016 – Found Cast Iron Monument and updated ties. Verified location of corner by VRS GPS methods.

April 22, 2021 – Found Cast Iron Monument and updated ties. Verified location of corner by VRS GPS methods.