

# CERTIFICATE OF LOCATION OF GOVERNMENT CORNER

County of Anoka

State of Minnesota

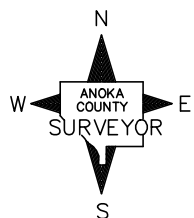
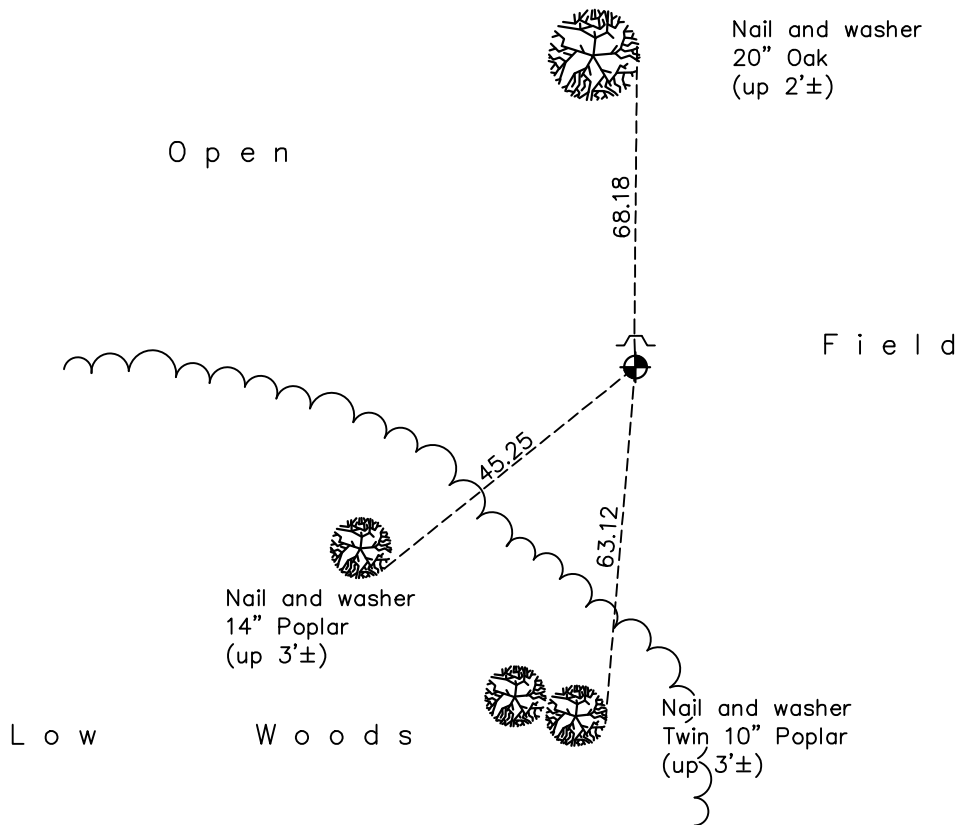
## South 1/4 Corner of Sec. 26 Township 31 Range 22

On the 12th day of April, 1976, the described corner was evidenced by an iron pipe

and to perpetuate the location of said corner, at the exact location thereof, a permanent marker was placed consisting of a cast iron monument with a sign and post on the north side

AND on the 4th day of May, 2021, said permanent marker was found flush with the surface and the ties were updated

Updated reference ties are as shown below.



Revision Date  
8/2/21

N.A.D. 1983 Coordinates  
(1996 Adjustment)

County Project Coordinates	
Northing	<u>137720.8249</u>
Easting	<u>555708.2755</u>
Date	<u>4/02/98</u>

I hereby certify that this United States public land survey monument record is correct and complete to the best of my knowledge and belief.

*David M Zieglmeier* Date 8/30/21

David Zieglmeier Anoka County Surveyor  
Minnesota License Number 46179

# HISTORY OF GOVERNMENT CORNER

Page No. 119

County of Anoka

State of Minnesota

## South 1/4 Corner of Sec. 26 Township 31 Range 22

### **CORNER HISTORY:**

April 18, 1976 – Found Iron Pipe on fence line. No ties.

August 19, 1992 – Replaced Iron Pipe with a Cast Iron Monument and established ties to monument. Sign and post on north side of monument.

July 24, 1996 – Found Cast Iron Monument and updated ties.

April 2, 1998 – Found Cast Iron Monument and established NAD 1983 (1996 Adjustment) Anoka County Project Coordinates by Static GPS methods. Updated ties.

August 25, 2010 – Found Cast Iron Monument flush with the surface with a sign and post on the north side. Updated ties.

December 20, 2016 – Found Cast Iron Monument flush with the surface with a sign and post on the north side. Updated ties.

December 20, 2016 – Found Cast Iron Monument flush with the surface with a sign and post on the north side. Updated ties. Verified location of corner by VRS GPS methods.