

# CERTIFICATE OF LOCATION OF GOVERNMENT CORNER

County of Anoka

State of Minnesota

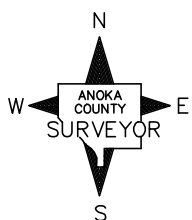
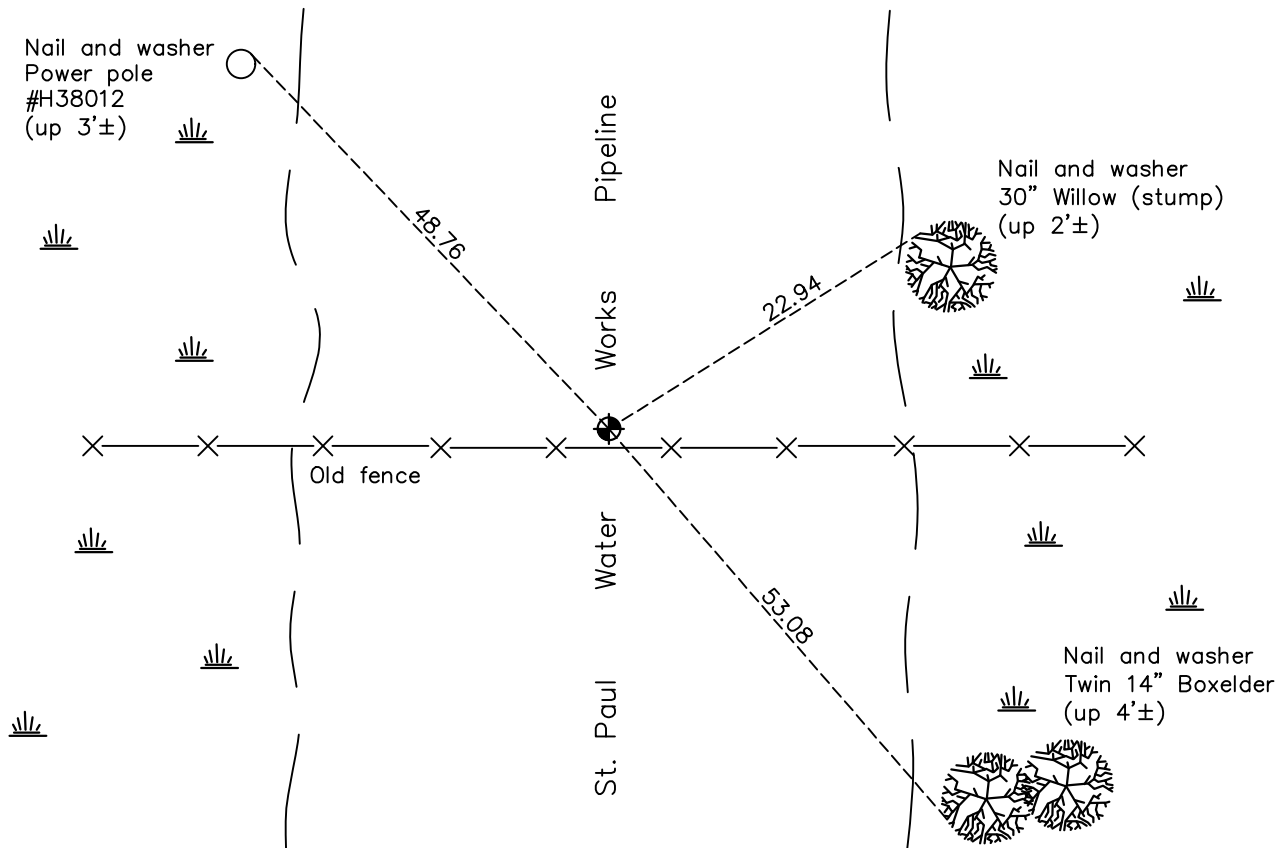
## Northwest Corner of Sec. 35 Township 31 Range 22

On the 23rd day of June, 1965, the described corner was evidenced by a 1/2" iron pipe

and to perpetuate the location of said corner, at the exact location thereof, a permanent marker was placed consisting of a 1/2" iron pipe with 'Anoka County' cap in drill hole

AND on the 4th day of May, 2021, said permanent marker was Found in concrete and the ties were updated

Updated reference ties are as shown below.



Revision Date  
 8/2/21

N.A.D. 1983 Coordinates  
 (1996 Adjustment)

County Project Coordinates	
Northing	<u>137752.5951</u>
Easting	<u>553066.7303</u>
Date	<u>4/06/98</u>

I hereby certify that this United States public land survey monument record is correct and complete to the best of my knowledge and belief.  
*David M Zieglmeier* Date 8/30/21  
 David Zieglmeier Anoka County Surveyor  
 Minnesota License Number 46179

# HISTORY OF GOVERNMENT CORNER

Page No. 120

County of Anoka

State of Minnesota

## Northwest Corner of Sec. 35 Township 31 Range 22

### **CORNER HISTORY:**

September 18, 1946 – Cartwright found Granite Monument 24.75 east of section corner . Established ties to the granite monument.

June 23, 1965 – Found 1/2” Iron Pipe flush with the surface on north side of fence post. Iron Pipe is in top center of pipeline ridge. Also found Granite Monument 24.75’ east per Cartwright ties dated September 18, 1946 (monument under 6” of water). Established ties to Iron Pipe.

August 16, 1969 – Found 1/2” Iron Pipe and updated ties.

July 13, 1973 – Found 1/2” Iron Pipe and updated ties.

June 3, 1977 – Replaced 1/2” Iron Pipe with Partial Cast Iron Monument flush with the surface and 0.5’± north of the fence line. Granite Monument was found dug up and laying on ground. A 2’ dia. fence post was set in the location of the granite monument. Updated ties.

August 12, 1980 – Found Cast Iron Monument and updated ties.

December 24, 1990 – Found Cast Iron Monument and updated ties.

October 30, 1991 – Found Cast Iron Monument and updated ties.

July 8, 1996 – Found Cast Iron Monument and updated ties.

April 6, 1998 – Found Cast Iron Monument and established NAD 1983 (1996 Adjustment) Anoka County Project Coordinates by Static GPS methods. Updated ties.

August 30, 2010 – Found Cast Iron Monument and updated ties.

April 19, 2011 – Found bent Iron Pipe, cast iron monument was not found, and verified location by Static GPS methods.

April 20, 2011 – Found bent Iron Pipe down 0.5’± w/chisel hole & etched lines in concrete pipe. Set 1/2”X4” Iron Pipe with Anoka County cap in drill hole. Verified location of corner by VRS GPS methods. Updated ties.

December 22, 2016 – Found 1/2” Iron Pipe with Anoka County Cap in concrete and updated ties.

December 22, 2016 – Found 1/2” Iron Pipe with Anoka County Cap in concrete and updated ties. Verified location of corner by VRS GPS methods.