

# CERTIFICATE OF LOCATION OF GOVERNMENT CORNER

County of Anoka

State of Minnesota

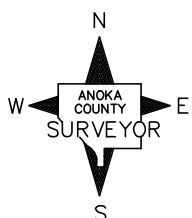
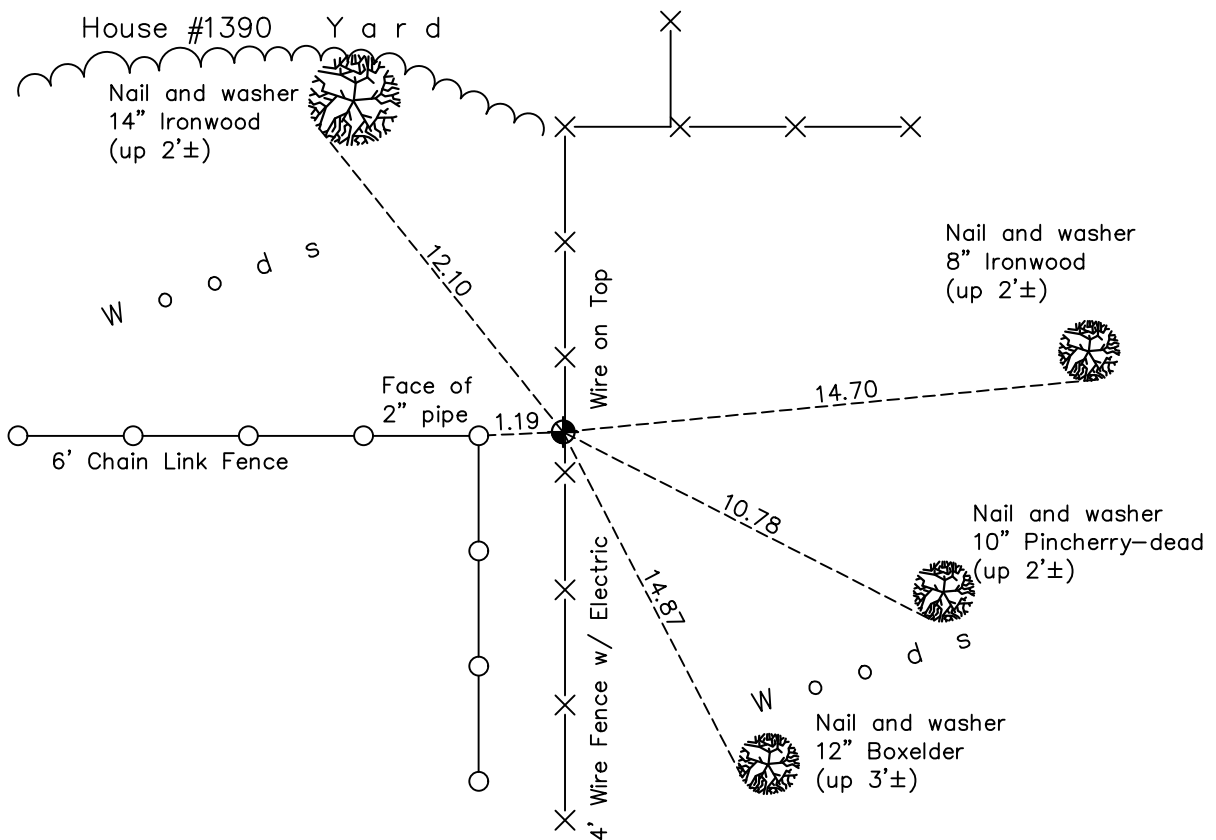
## North 1/4 Corner of Sec. 34 Township 31 Range 22

On the 15th day of June, 1965, the described corner was evidenced by R.M. Knudson ties

and to perpetuate the location of said corner, at the exact location thereof, a permanent marker was placed consisting of a cast iron monument

AND on the 10th day of May, 2021, said permanent marker was found down 0.1'± and the ties were updated

Updated reference ties are as shown below.



Revision Date  
8/2/21

N.A.D. 1983 Coordinates  
 (1996 Adjustment)

County Project Coordinates	
Northing	137737.8579
Easting	550451.3259
Date	4/06/98

I hereby certify that this United States public land survey monument record is correct and complete to the best of my knowledge and belief.  
*David M Zieglmeier* Date 8/30/21  
 David Zieglmeier Anoka County Surveyor  
 Minnesota License Number 46179

# HISTORY OF GOVERNMENT CORNER

County of Anoka

State of Minnesota

## North 1/4 Corner of Sec. 34 Township 31 Range 22

### **CORNER HISTORY:**

April 20, 1961 – R.M. Knudsen set Cast Iron Monument and established ties to monument.

June 15, 1965 – Found Cast Iron Monument flush with the surface and 2.5'± west of north-south fence. Updated ties.

August 18, 1969 – Found Cast Iron Monument and updated ties.

July 12, 1973 – Found Cast Iron Monument and updated ties.

June 3, 1977 – Found Cast Iron Monument and updated ties.

August 12, 1980 – Found Cast Iron Monument and updated ties.

October 29, 1991 – Found Cast Iron Monument and updated ties.

April 6, 1996 – Found Cast Iron Monument and updated ties.

July 8, 1996 – Found Cast Iron Monument and updated ties.

April 6, 1998 – Found Cast Iron Monument with steel post on the west side and established NAD 1983 (1996 Adjustment) Anoka County Project Coordinates by Static GPS methods. Updated ties.

September 20, 2010 – Found Cast Iron Monument down 0.1'± and updated ties.

December 20, 2016 – Found Cast Iron Monument down 0.1'± and updated ties.

May 10, 2021 – Found Cast Iron Monument down 0.1'± and updated ties. Verified location of corner by VRS GPS methods.