

# CERTIFICATE OF LOCATION OF GOVERNMENT CORNER

County of Anoka

State of Minnesota

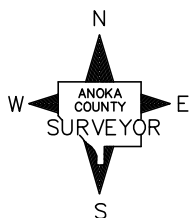
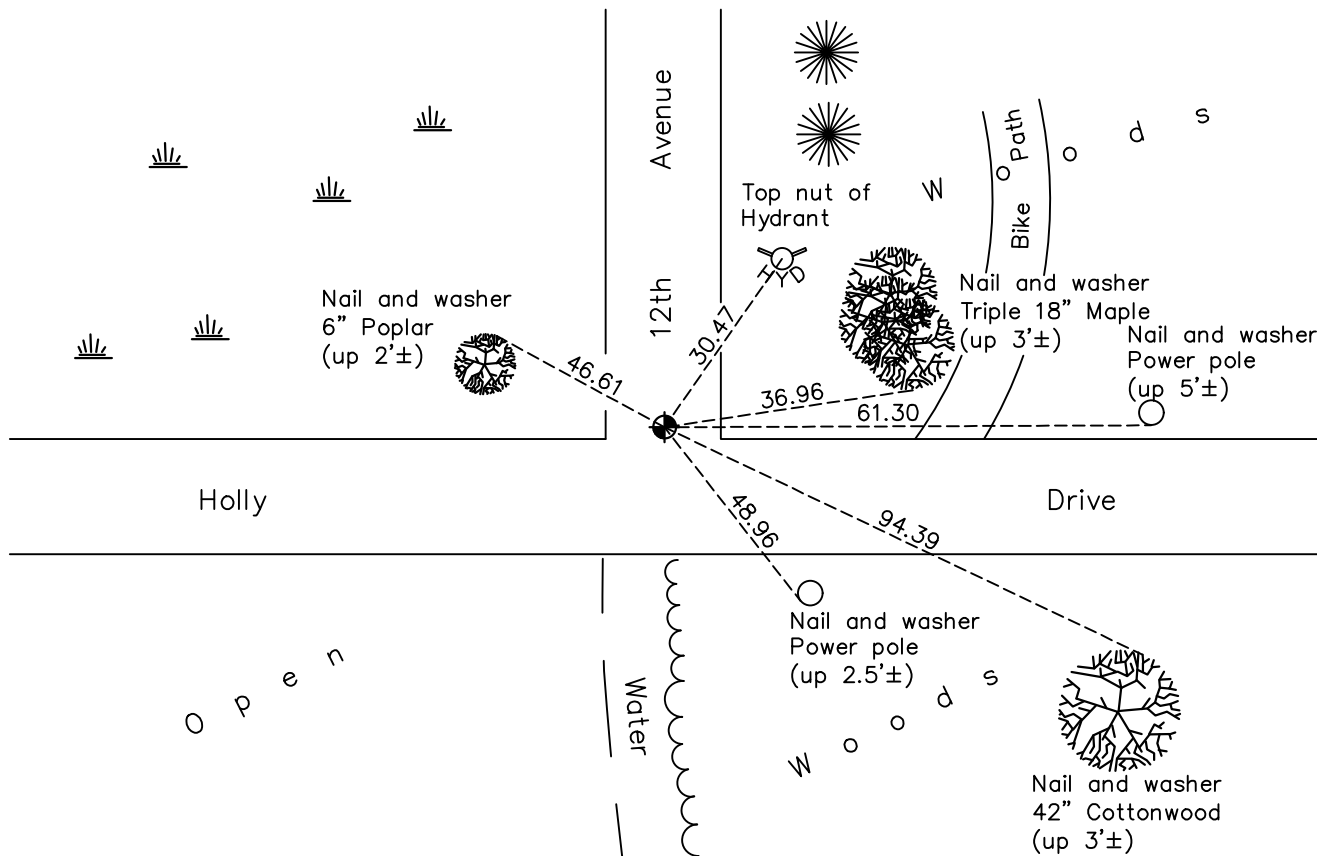
## Southeast Corner of Sec. 28 Township 31 Range 22

On the 14th day of March, 1968, the described corner was evidenced by area resurvey

and to perpetuate the location of said corner, at the exact location thereof, a permanent marker was placed consisting of a cast iron monument

AND on the 10th day of May, 2021, said permanent marker was found flush with the surface and the ties were updated

Updated reference ties are as shown below.



Revision Date  
 8/3/21

N.A.D. 1983 Coordinates  
 (1996 Adjustment)

County Project Coordinates	
Northing	137722.5223
Easting	547766.6023
Date	3/25/98

I hereby certify that this United States public land survey monument record is correct and complete to the best of my knowledge and belief.  
*David M Zieglmeier* Date 8/30/21  
 David Zieglmeier Anoka County Surveyor  
 Minnesota License Number 46179

# HISTORY OF GOVERNMENT CORNER

Page No. 122

County of Anoka

State of Minnesota

## Southeast Corner of Sec. 28 Township 31 Range 22

### **CORNER HISTORY:**

April 10, 1961 – R.M. Knudsen survey data sheet shows found Iron Pipe at location of corner.

March 16, 1964 – Found 1/2" Iron Pipe up 0.2'± and established ties to pipe.

March 14, 1968 – Set Bridge Spike using area resurvey and established ties to spike.

March 27, 1968 – Replaced Bridge Spike with a Cast Iron Monument and updated ties. Set P.K. nails 2.00' north and east.

June 25, 1973 – Found Cast Iron Monument and updated ties.

June 2, 1977 – Found Cast Iron Monument and updated ties.

August 8, 1980 – Found Cast Iron Monument and updated ties.

August 30, 1991 – Found Cast Iron Monument and updated ties.

April 15, 1996 – Set construction ties and removed Cast Iron Monument prior to road construction.

April 29, 1997 – Set Cast Iron Monument after road construction using construction ties. Updated ties.

March 25, 1998 – Found Cast Iron Monument and established NAD 1983 (1996 Adjustment) Anoka County Project Coordinates by Static GPS methods. Updated ties.

July 8, 2010 – Found Cast Iron Monument flush with the surface and updated ties.

December 13, 2016 – Found Cast Iron Monument flush with the surface and updated ties.

May 10, 2021 – Found Cast Iron Monument flush with the surface and updated ties. Verified location of corner by VRS GPS methods.