

# CERTIFICATE OF LOCATION OF GOVERNMENT CORNER

County of Anoka

State of Minnesota

## Witness Corner of Sec. 28 Township 31 Range 22

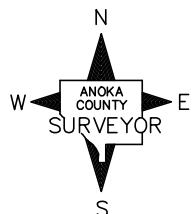
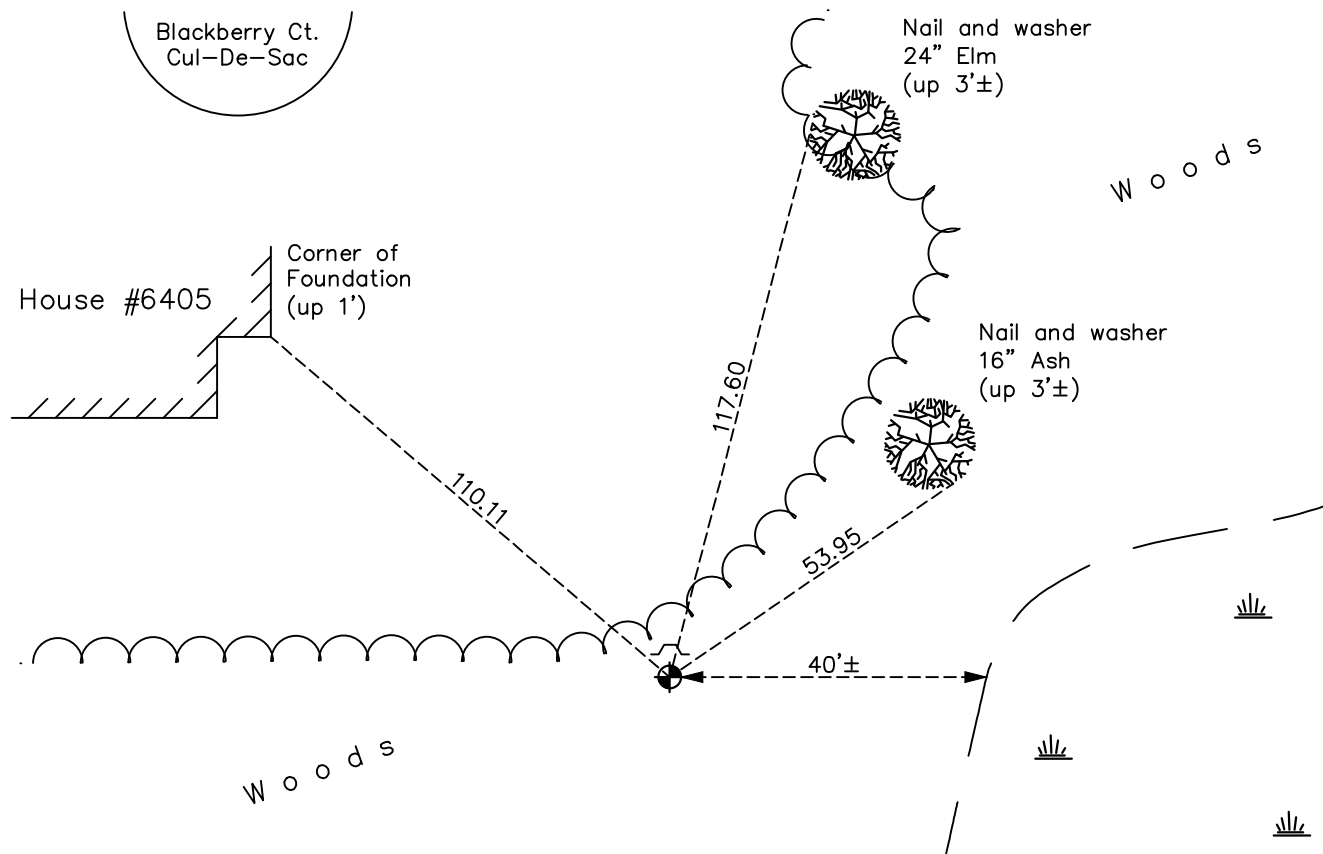
(on south line of SW 1/4)

On the 3rd day of January, 1992, the described corner was evidenced by area resurvey

and to perpetuate the location of said corner, at the exact location thereof, a permanent marker was placed consisting of a cast iron monument with a sign and post on the north side

AND on the 10th day of May, 2021, said permanent marker was found flush and the ties were updated

Updated reference ties are as shown below.



Revision Date

5/18/21

N.A.D. 1983 Coordinates  
(1996 Adjustment)

County Project Coordinates	
Northing	<u>137709.3416</u>
Easting	<u>544832.9267</u>
Date	<u>5/12/21</u>

I hereby certify that this United States public land survey monument record is correct and complete to the best of my knowledge and belief.

*David M. Zieglermeier* Date 6/24/21

David M. Zieglermeier, Anoka County Surveyor

Minnesota License Number 46179

# HISTORY OF GOVERNMENT CORNER

Page No. 123

County of Anoka

State of Minnesota

Witness Corner of Sec. 28 Township 31 Range 22  
(on south line of SW 1/4)

## **CORNER HISTORY:**

January 3, 1992 - Set cast iron monument using area resurvey. Established ties to monument. Set sign and post on the north side.

April 28, 1998 - Found cast iron monument w/sign and post on the north side. Updated ties. Established NAD 1983 (1996 Adj.) Anoka County project coordinates by static GPS methods.

September 16, 2010 - Found cast iron monument flush and updated ties.

December 19, 2016 - Found cast iron monument flush w/sign and post on the north side. Updated ties.

May 10, 2021 - Found cast iron monument. Verified position by VRS GPS methods. Updated ties.

May 12, 2021 - Found cast iron monument and verified position by static GPS methods.