

# CERTIFICATE OF LOCATION OF GOVERNMENT CORNER

County of Anoka

State of Minnesota

## Witness Corner of Sec. 28 Township 31 Range 22

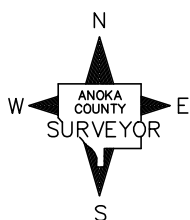
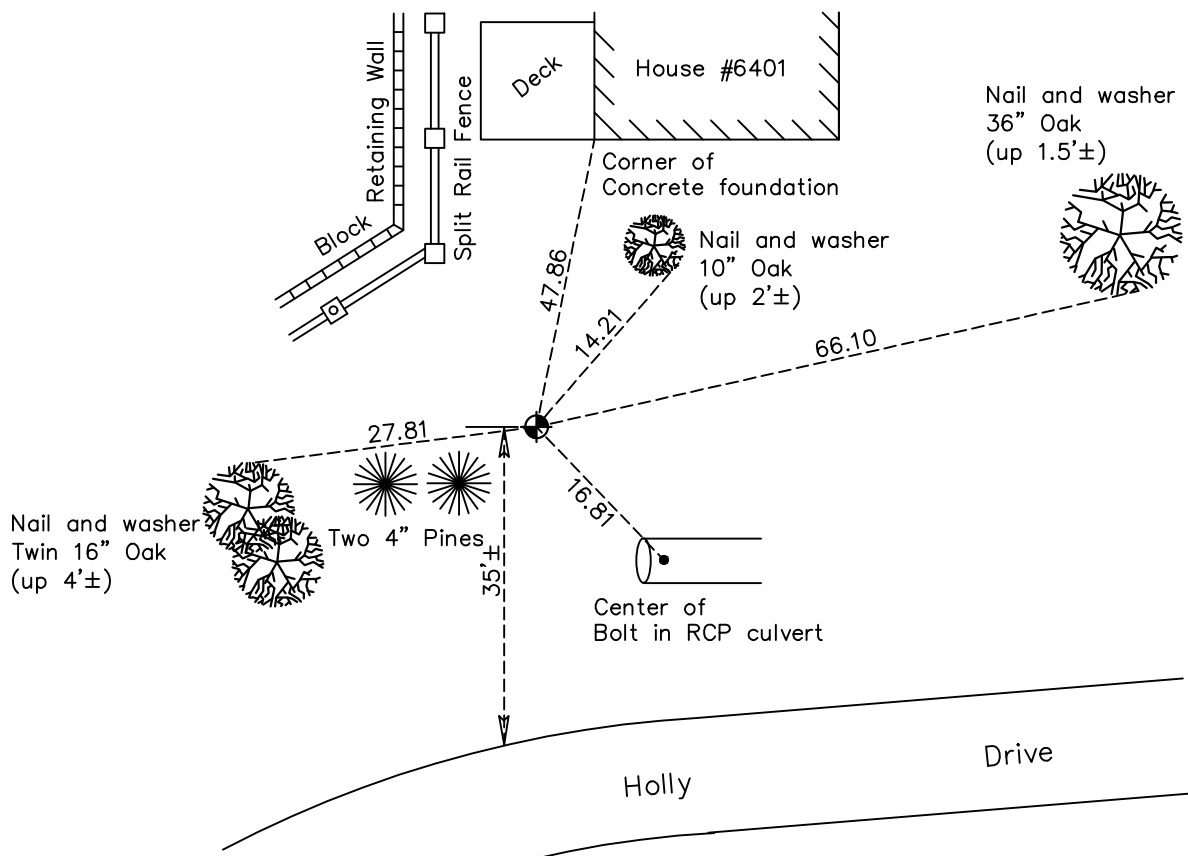
(on south line of SE 1/4)

On the 3rd day of January, 1992, the described corner was evidenced by area resurvey

and to perpetuate the location of said corner, at the exact location thereof, a permanent marker was placed consisting of a cast iron monument

AND on the 10th day of May, 2021, said permanent marker was found flush with the surface and the ties were updated.

Updated reference ties are as shown below.



Revision Date  
8/3/21

N.A.D. 1983 Coordinates  
 (1996 Adjustment)

County Project Coordinates	
Northing	<u>137714.6703</u>
Easting	<u>546309.4833</u>
Date	<u>3/25/98</u>

I hereby certify that this United States public land survey monument record is correct and complete to the best of my knowledge and belief.  
*David M Zieglmeier* Date 8/30/21  
 David Zieglmeier Anoka County Surveyor  
 Minnesota License Number 46179

# HISTORY OF GOVERNMENT CORNER

Page No. 123A

County of Anoka

State of Minnesota

Witness Corner of Sec. 28 Township 31 Range 22  
(on south line of SE 1/4)

## **CORNER HISTORY:**

January 3, 1991 – Set Cast Iron Monument using area resurvey and set sign and post on the north side of monument. Established ties to monument.

January 3, 1992 – Found Cast Iron Monument and updated ties.

July 8, 1996 – Found Cast Iron Monument and updated ties.

March 25, 1998 – Found Cast Iron Monument and established NAD 1983 (1996 Adjustment) Anoka County Project Coordinates by Static GPS methods. Updated ties.

September 13, 2010 – Found Cast Iron Monument broken off down  $0.4' \pm$  and updated ties. Sign and post was missing.

April 27, 2011 – Replaced broken Cast Iron Monument with a new Cast Iron monument and verified location of corner by VRS and Static GPS methods. Updated ties.

December 15, 2016 – Found Cast Iron Monument flush with the surface and updated ties.

May 10, 2021 – Found Cast Iron Monument flush with the surface and updated ties. Verified location of corner by VRS GPS methods.