

# CERTIFICATE OF LOCATION OF GOVERNMENT CORNER

County of Anoka

State of Minnesota

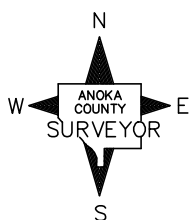
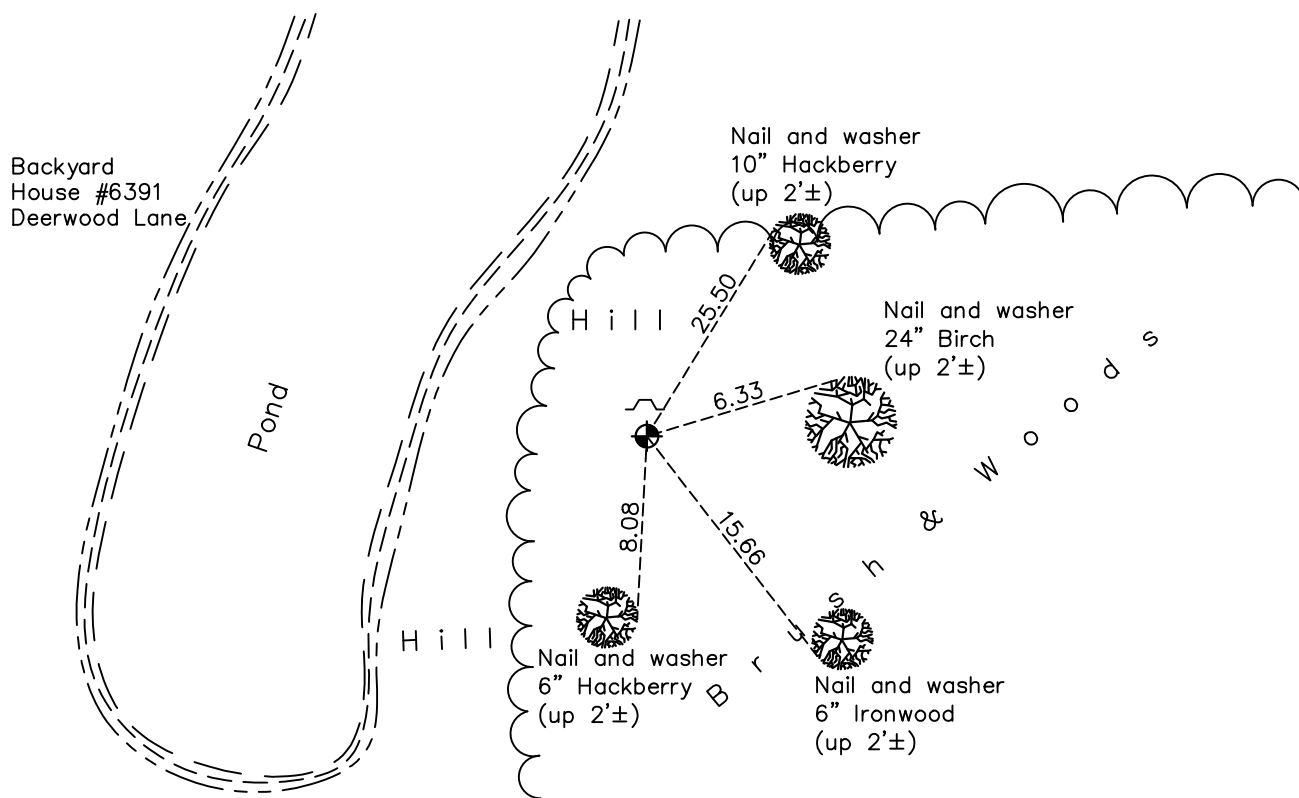
## Southwest Corner of Sec. 28 Township 31 Range 22

On the 16th day of March, 1964, the described corner was evidenced by a 1/2" iron pipe

and to perpetuate the location of said corner, at the exact location thereof, a permanent marker was placed consisting of a cast iron monument with a sign and post on the north side

AND on the 12th day of May, 2021, said permanent marker was found up 0.2'± and the ties were updated

Updated reference ties are as shown below.



Revision Date  
8/3/21

N.A.D. 1983 Coordinates  
(1996 Adjustment)

County Project Coordinates	
Northing	<u>137715.3173</u>
Easting	<u>542530.0562</u>
Date	<u>4/08/98</u>

I hereby certify that this United States public land survey monument record is correct and complete to the best of my knowledge and belief.

*David M. Zieglmeier* Date 8/30/21

David Zieglmeier Anoka County Surveyor  
Minnesota License Number 46179

# HISTORY OF GOVERNMENT CORNER

Page No. 124

County of Anoka

State of Minnesota

## Southwest Corner of Sec. 28 Township 31 Range 22

### **CORNER HISTORY:**

March 16, 1964 – Found 1/2" Iron Pipe and established ties to pipe.

September 5, 1969 – Replaced Iron Pipe with a Cast Iron Monument set up 0.2'± and updated ties.

July 5, 1973 – Found Cast Iron Monument and updated ties.

June 3, 1977 – Found Cast Iron Monument and updated ties.

August 13, 1980 – Found Cast Iron Monument and updated ties.

July 17, 1986 – Found Cast Iron Monument and updated ties.

September 21, 1989 – Found Cast Iron Monument and updated ties.

October 25, 1991 – Found Cast Iron Monument and updated ties. Set sign and post on north side of monument.

July 8, 1996 – Found Cast Iron Monument and updated ties.

April 8, 1998 – Found Cast Iron Monument and established NAD 1983 (1996 Adjustment) Anoka County Project Coordinates by Static GPS methods. Updated ties.

September 20, 2010 – Found Cast Iron Monument up 0.2'± with a sign and post on the north side. Updated ties.

December 15, 2016 – Found Cast Iron Monument up 0.2'± with a sign and post on the north side. Updated ties.

May 12, 2021 – Found Cast Iron Monument up 0.2'± with a sign and post on the north side. Updated ties.