

CERTIFICATE OF LOCATION OF GOVERNMENT CORNER

County of Anoka

State of Minnesota

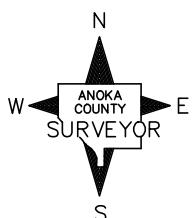
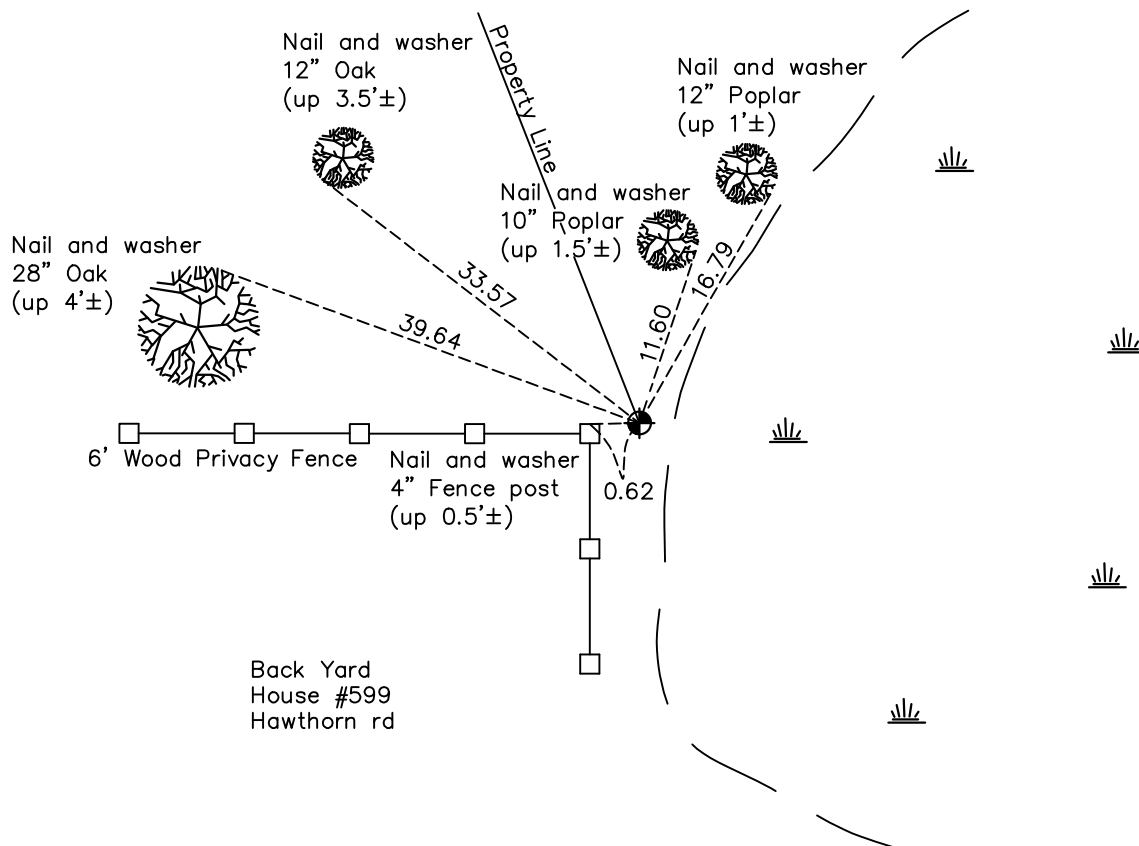
South 1/4 Corner of Sec. 29 Township 31 Range 22

On the 16th day of March, 1964, the described corner was evidenced by a 1" iron pipe

and to perpetuate the location of said corner, at the exact location thereof, a permanent marker was placed consisting of a cast iron monument

AND on the 12th day of May, 2021, said permanent marker was found up 0.4'± and the ties were updated.

Updated reference ties are as shown below.



N.A.D. 1983 Coordinates
(1996 Adjustment)

County Project Coordinates

Northing 137714.4959

Easting 539900.9972

Date 5/07/97

I hereby certify that this United States public land survey monument record is correct and complete to the best of my knowledge and belief.

David M Zieglmeier Date 8/31/21

David Zieglmeier Anoka County Surveyor

Minnesota License Number 46179

Revision Date

8/3/21

HISTORY OF GOVERNMENT CORNER

Page No. 125

County of Anoka

State of Minnesota

South 1/4 Corner of Sec. 29 Township 31 Range 22

CORNER HISTORY:

March 16, 1964 – Found 1” Iron Pipe up 0.5'± and established ties to pipe.

June 23, 1965 – Found 1” Iron Pipe flush with the surface and 0.5' west of fence. Updated ties.

August 21, 1969 – Replaced 1” Iron Pipe with a Cast Iron Monument set up 0.1'±. Updated ties.

July 5, 1973 – Found Cast Iron Monument and updated ties.

June 6, 1977 – Found Cast Iron Monument and updated ties.

October 25, 1991 – Found Cast Iron Monument and updated ties.

July 29, 1996 – Found Cast Iron Monument and updated ties. Set a sign and post on the north side of monument.

May 7, 1997 – Found Cast Iron Monument with a sign and post on the north side and established NAD 1983 (1996 Adjustment) Anoka County Project Coordinates by Static GPS methods. Updated ties.

October 17, 2010 – Found Cast Iron Monument up 0.4'± with a sign and post on the north side. Updated ties.

December 15, 2016 – Found Cast Iron Monument up 0.4'± and updated ties. Sign was missing.

May 12, 2021 – Found Cast Iron Monument up 0.4'± and updated ties. Sign was missing.