

CERTIFICATE OF LOCATION OF GOVERNMENT CORNER

County of Anoka

State of Minnesota

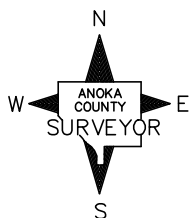
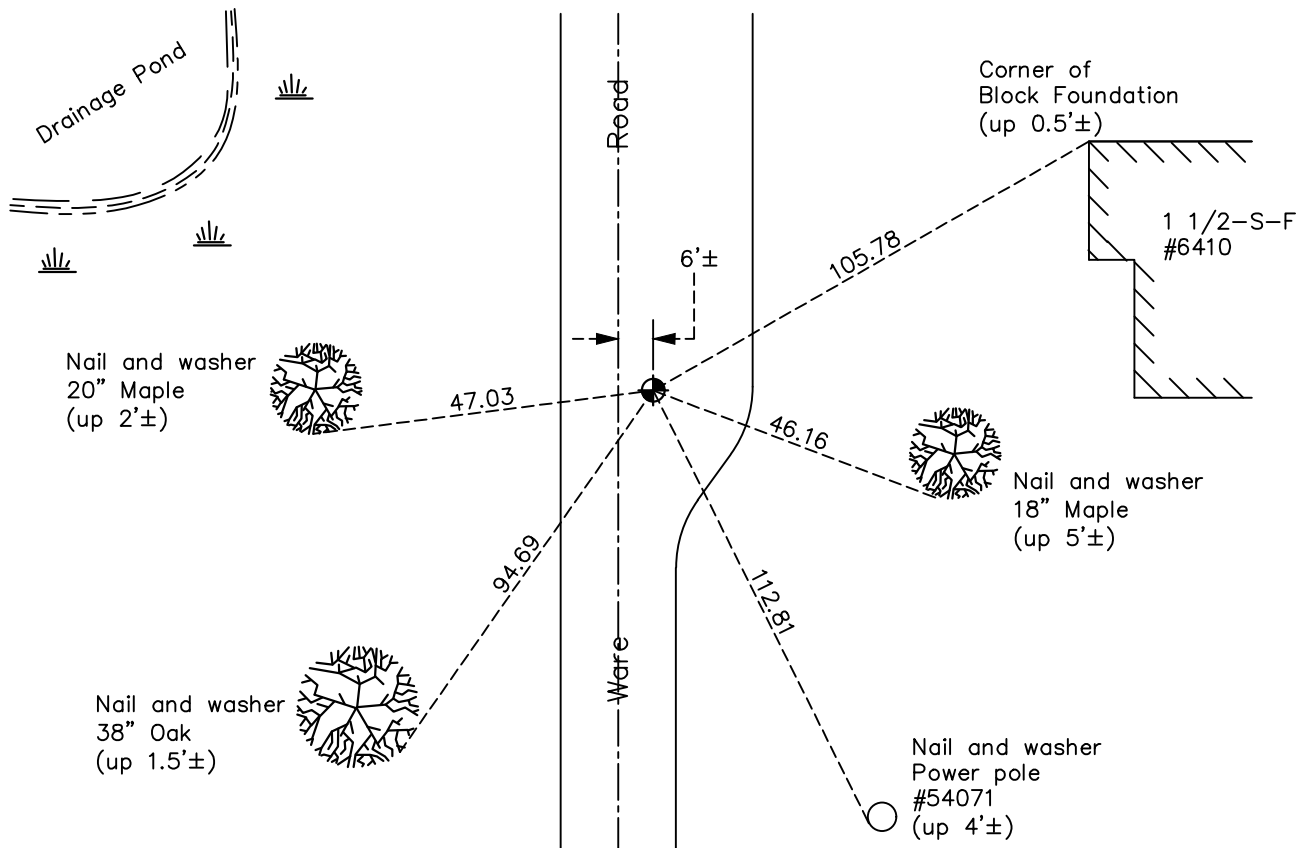
Northeast Corner of Sec. 31 Township 31 Range 22

On the 10th day of April, 1962, the described corner was evidenced by a concrete monument

and to perpetuate the location of said corner, at the exact location thereof, a permanent marker was placed consisting of a cast iron monument

AND on the 12th day of May, 2021, said permanent marker was found flush with the surface and the ties were updated

Updated reference ties are as shown below.



Revision Date
8/3/21

N.A.D. 1983 Coordinates
(1996 Adjustment)

County Project Coordinates	
Northing	<u>137715.1247</u>
Easting	<u>537273.2886</u>
Date	<u>11/05/98</u>

I hereby certify that this United States public land survey monument record is correct and complete to the best of my knowledge and belief.

David M Zieglmeier Date 8/30/21

David Zieglmeier Anoka County Surveyor
Minnesota License Number 46179

HISTORY OF GOVERNMENT CORNER

Page No. 126

County of Anoka

State of Minnesota

Northeast Corner of Sec. 31 Township 31 Range 22

CORNER HISTORY:

October 28, 1944 – Cartwright found Concrete Monument down 0.6'±. Established ties to monument.

June 4, 1959 – Found 4" square Stone Monument flush with the surface and updated ties.

April 10, 1962 – Found 4" square Concrete Monument down 0.5'± and updated ties. Set 3/4" Iron Pipe on the north side of monument.

June 15, 1965 – Found 4" square Concrete Monument and updated ties.

August 21, 1969 – Set Cast Iron Monument flush with the surface and on top of broken concrete monument. Set P.K. nails 2.00' north and east and updated ties.

July 3, 1973 – Found Cast Iron Monument and updated ties.

December 3, 1974 – Found Cast Iron Monument broken and leaning. Replaced with a Cast Iron Monument using remaining ties. Updated ties.

June 6, 1977 – Found Cast Iron Monument and updated ties.

July 31, 1980 – Found Cast Iron Monument and updated ties.

June 8, 1983 – Found Cast Iron Monument and updated ties.

July 16, 1986 – Found Cast Iron Monument and updated ties.

August 27, 1991 – Found Cast Iron Monument and updated ties.

October 31, 1991 – Found Cast Iron Monument and updated ties prior to construction.

September 7, 1993 – Found Cast Iron Monument and updated ties.

June 12, 1996 – Found Cast Iron Monument and updated ties.

November 5, 1998 – Found Cast Iron Monument and established NAD 1983 (1996 Adjustment) Anoka County Project Coordinates by Static GPS methods. Updated ties.

July 8, 2010 – Found Cast Iron Monument flush with the surface and updated ties.

December 19, 2016 – Found Cast Iron Monument flush with the surface and updated ties.

May 12, 2021 – Found Cast Iron Monument flush with the surface and updated ties. Verified location of corner by VRS GPS methods.