

CERTIFICATE OF LOCATION OF GOVERNMENT CORNER

County of Anoka

State of Minnesota

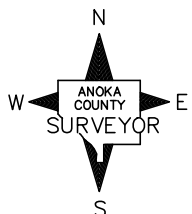
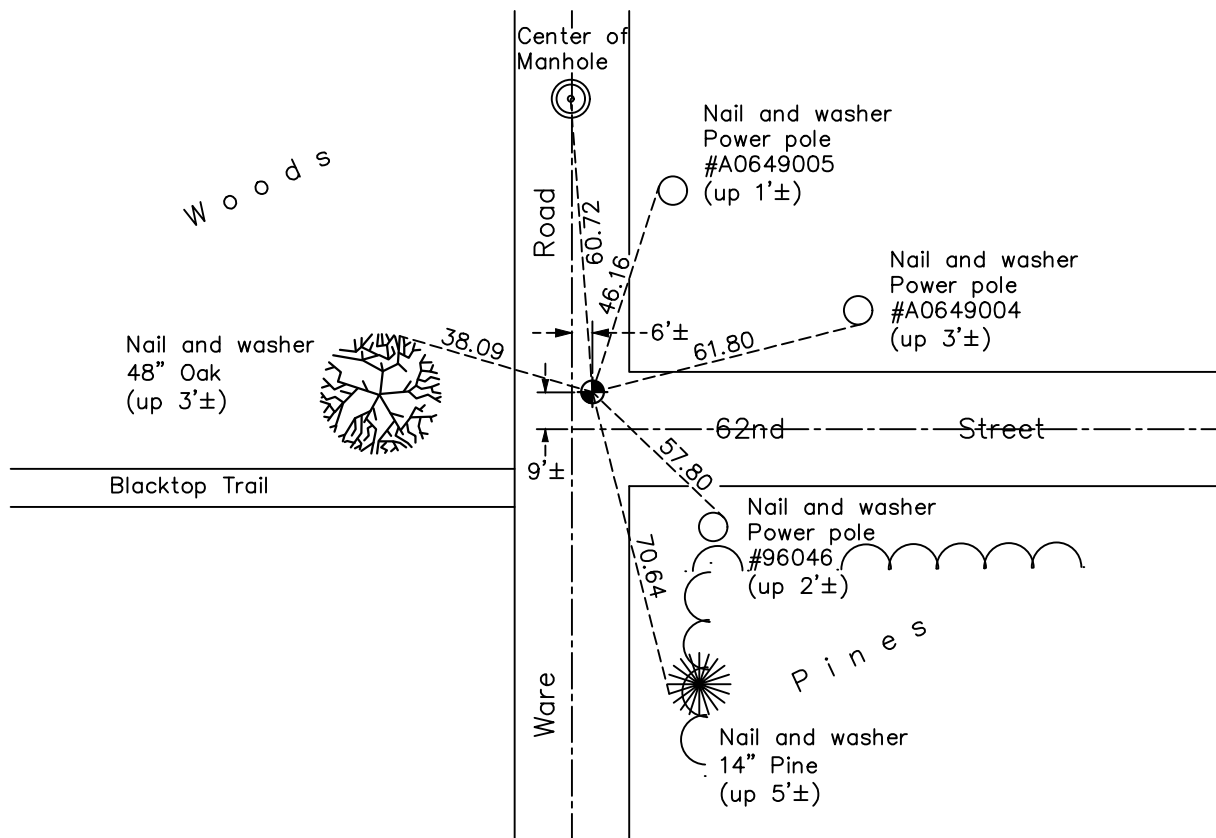
East 1/4 Corner of Sec. 31 Township 31 Range 22

On the 10th day of April, 1962, the described corner was evidenced by a 4" square concrete monument

and to perpetuate the location of said corner, at the exact location thereof, a permanent marker was placed consisting of a cast iron monument

AND on the 2nd day of June, 2021, said permanent marker was found flush with the surface, and the ties were updated.

Updated reference ties are as shown below.



Revision Date

8/3/21

N.A.D. 1983 Coordinates
(1996 Adjustment)

County Project Coordinates	
Northing	<u>135073.7673</u>
Easting	<u>537297.2089</u>
Date	<u>6/13/96</u>

I hereby certify that this United States public land survey monument record is correct and complete to the best of my knowledge and belief.

David M Ziegler Date 8/30/21

David M. Ziegler, Anoka County Surveyor

Minnesota License Number 46179

HISTORY OF GOVERNMENT CORNER

Page No. 131

County of Anoka

State of Minnesota

East 1/4 Corner of Sec. 31 Township 31 Range 22

CORNER HISTORY:

October 28, 1944 - Cartwright found monument. Established ties to monument.

June 4, 1959 - N.S.P. Found 4" square stone monument down 0.6'± and updated ties.

April 10, 1962 - Found 4" square concrete monument with hole in the center and top painted red down 15"±. Set 3/4" iron pipe on the north side and updated ties.

June 15, 1965 - Found 4" square concrete monument and updated ties.

August 21, 1969 - Set cast iron monument flush with surface in place of RR spike on top of Concrete Monument. Set P.K. nails 2.00' north and east. Updated ties.

July 2, 1973 - Found cast iron monument and updated ties.

June 6, 1977 - Found cast iron monument and updated ties.

July 31, 1980- Found cast iron monument and updated ties.

July 16, 1986 - Found cast iron monument and updated ties.

August 27, 1991 - Found cast iron monument and updated ties.

June 13, 1996 - Found cast iron monument and established NAD 1983 (1996 Adj.) Anoka County project coordinates by static GPS methods. Updated ties.

June 1, 1998 - Set construction ties prior to road construction.

December 12, 2013 - Found cast iron monument flush. Verified location by VRS GPS methods. Updated ties.

January 6, 2017 - Found cast iron monument and updated ties.

June 7, 2018 - Found cast iron monument flush. Verified position by VRS GPS methods and updated ties prior to road construction. Removed monument top.

October 3, 2018 - Raised cast iron monument flush with road after construction. Verified position by VRS GPS methods. Updated ties.

June 2, 2021 - Found cast iron monument flush with road. Verified position by VRS GPS methods. Updated ties.