

CERTIFICATE OF LOCATION OF GOVERNMENT CORNER

County of Anoka

State of Minnesota

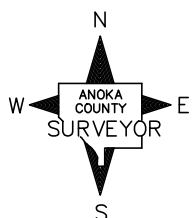
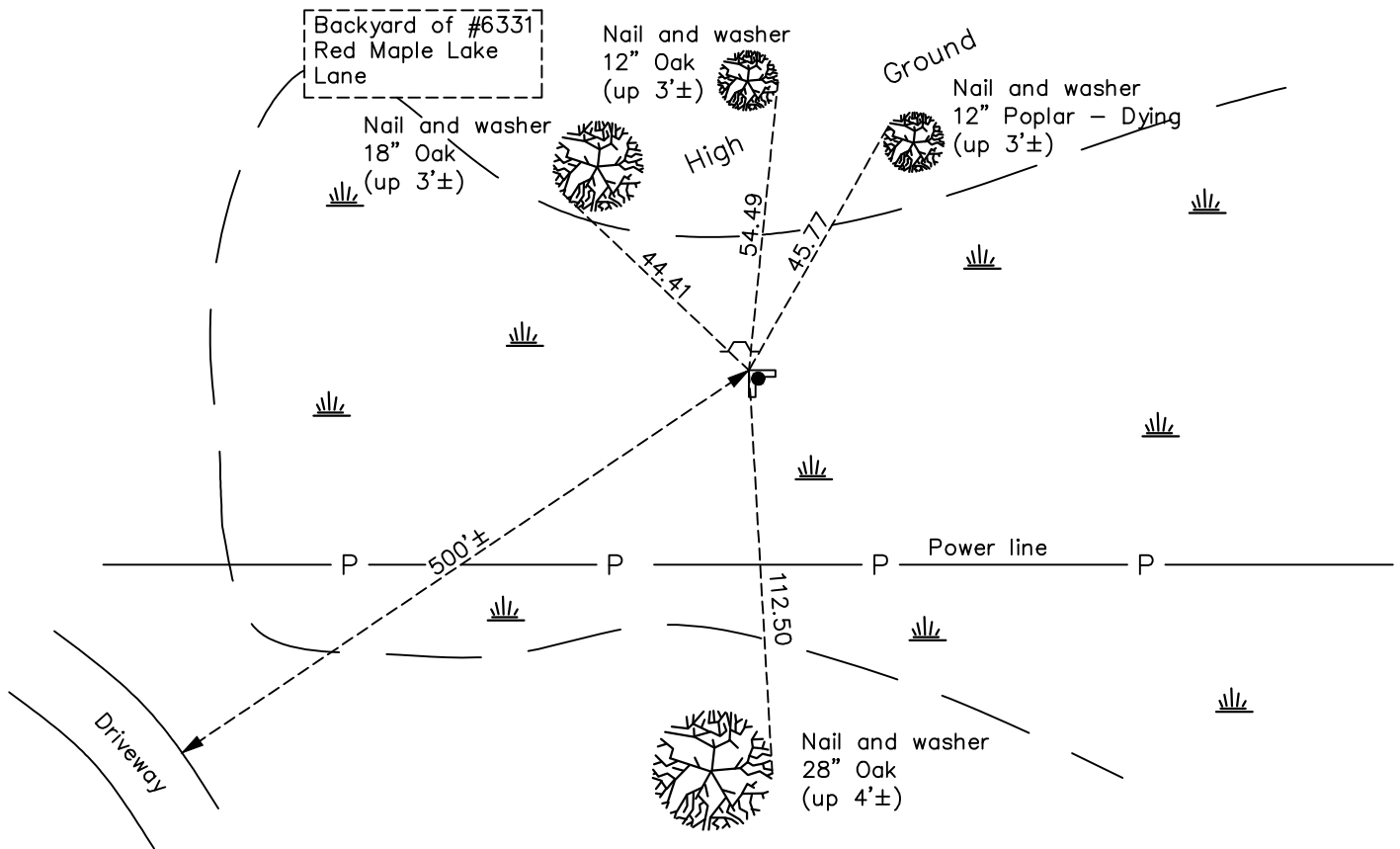
West 1/4 Corner of Sec. 33 Township 31 Range 22

On the 4th day of May, 1971, the described corner was evidenced by a 2" angle iron

and to perpetuate the location of said corner, at the exact location thereof, a permanent marker was placed consisting of the same 2" angle iron set in concrete with a sign and post on the north side

AND on the 20th day of July, 2023, said permanent marker was Set 2' rebar w/ aluminum cap & punch mark up 1.5'± above concrete base, at inside corner of existing angle iron. Updated ties.

Updated reference ties are as shown below.



Revision Date
7/20/2023

N.A.D. 1983 Coordinates
 (1996 Adjustment)

County Project Coordinates	
Northing	<u>135070.9812</u>
Easting	<u>542568.7957</u>
Date	<u>4/02/98</u>

I hereby certify that this United States public land survey monument record is correct and complete to the best of my knowledge and belief.

David Zieglermeier Date 12/11/23

David M. Zieglermeier, Anoka County Surveyor
 Minnesota License Number 46179

HISTORY OF GOVERNMENT CORNER

Page No. 132

County of Anoka

State of Minnesota

West 1/4 Corner of Sec. 33 Township 31 Range 22

CORNER HISTORY:

May 4, 1971 – Found 2” Angle Iron up 1’± in a 3’± dia. concrete slab . Set sign and post on north edge of concrete slab and established ties to monument.

July 10, 1973 – Could not get to 2” Angle Iron, check in the winter.

January 4, 1974 – Found 2” Angle Iron and updated ties.

January 6, 1978 – Found 2” Angle Iron up 1’± with sign and post on the north side and updated ties.

May 29, 1981 – Found 2” Angle Iron and updated ties.

July 28, 1986 – Found 2” Angle Iron and updated ties.

October 30, 1991– Found 2” Angle Iron and updated ties.

June 20, 1996 – Found 2” Angle Iron and updated ties.

April 2, 1998– Found 2” Angle Iron and established NAD 1983 (1996 Adjustment) Anoka County Project Coordinates by Static GPS methods. Updated ties.

September 21, 2010 – Found 2” Angle Iron up 1’± and updated ties.

January 9, 2017 – Found 2” Angle Iron up 1’± and updated ties.

December 30, 2022 – Found 2” Angle Iron up 1’±, verified position by RTK GPS method and updated the ties.

July 20, 2023 – Found 2” Angle Iron up 1’±. Set 2’ rebar w/ aluminum cap and punch mark up 1.5’± above concrete base, at inside corner of existing angle iron, using ACS RTK GPS method to published coordinates and verifying with historical ties. Updated ties after setting aluminum cap with punch mark.