

CERTIFICATE OF LOCATION OF GOVERNMENT CORNER

County of Anoka

State of Minnesota

Witness Corner of Sec. 33 Township 31 Range 22

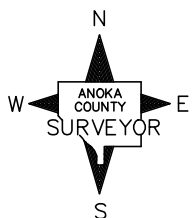
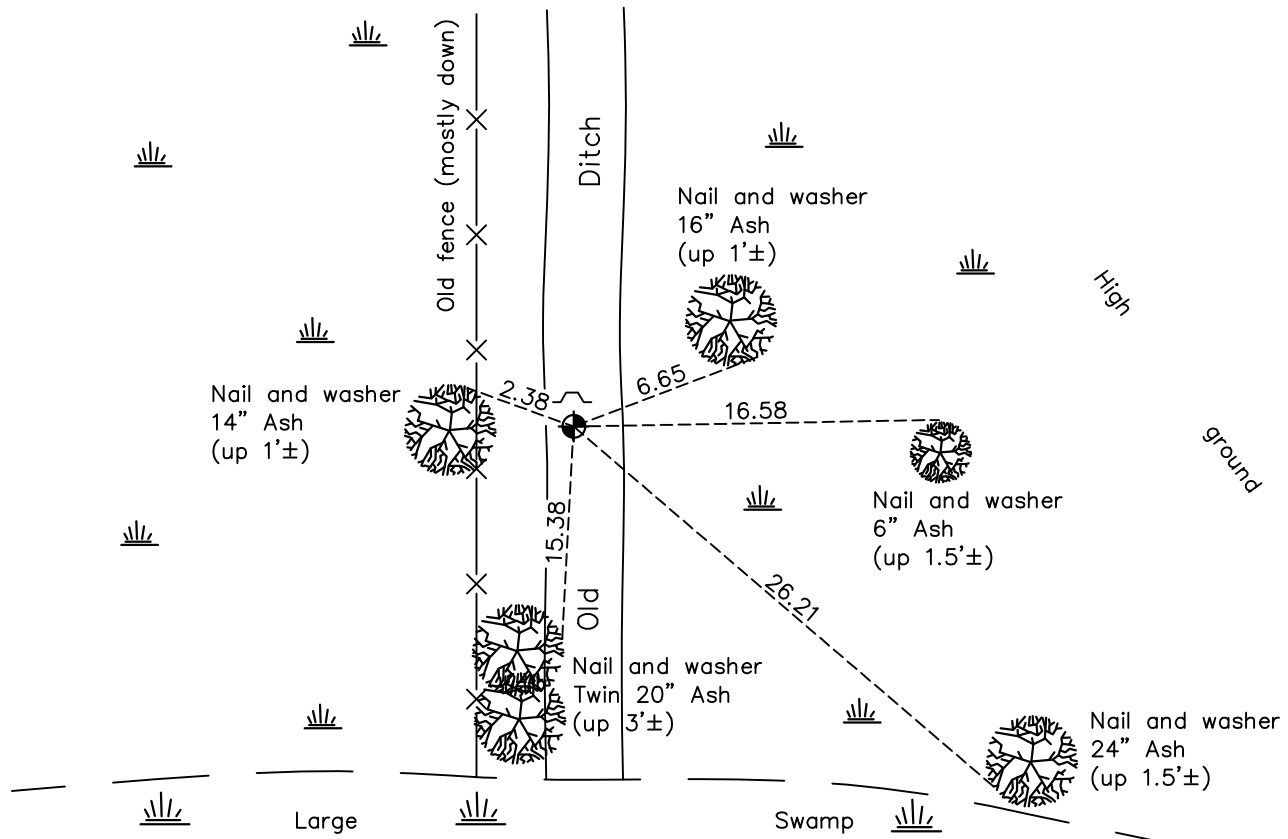
(on east line of section)

On the ____ day of May, 1971, the described corner was evidenced by area resurvey

and to perpetuate the location of said corner, at the exact location thereof, a permanent marker was placed consisting of a cast iron monument with a sign and post on the north side

AND on the 25th day of May, 2021, said permanent marker was found up 0.2'± and the ties were updated

Updated reference ties are as shown below.



Revision Date
8/3/21

N.A.D. 1983 Coordinates
(1996 Adjustment)

County Project Coordinates	
Northing	<u>136036.3968</u>
Easting	<u>547790.2882</u>
Date	<u>4/20/98</u>

I hereby certify that this United States public land survey monument record is correct and complete to the best of my knowledge and belief.

David M Zieglmeier Date 8/30/21

David Zieglmeier Anoka County Surveyor
Minnesota License Number 46179

HISTORY OF GOVERNMENT CORNER

Page No. 133

County of Anoka

State of Minnesota

Witness Corner of Sec. 33 Township 31 Range 22
(on east line of section)

CORNER HISTORY:

DATE UNKNOWN– Set Cast Iron Monument with sign and post 0.5'± north using area resurvey. Established ties to monument.

July 11, 1973 – Found Cast Iron Monument and updated ties.

June 8, 1977 – Found Cast Iron Monument and updated ties.

October 31, 1991– Found Cast Iron Monument with a sign and post on the north side and updated ties.

July 18, 1996 – Found Cast Iron Monument and updated ties.

April 20, 1998 – Found Cast Iron Monument and established NAD 1983 (1996 Adjustment) Anoka County Project Coordinates by Static GPS methods. Updated ties.

September 21, 2010 – Found Cast Iron Monument up 0.2'± and updated ties.

January 26, 2017 – Found Cast Iron Monument up 0.2'± with a sign and post on the north side and updated ties.

May 25, 2021 – Found Cast Iron Monument up 0.2'± with a sign and post on the north side and updated ties.