

CERTIFICATE OF LOCATION OF GOVERNMENT CORNER

County of Anoka

State of Minnesota

Witness Corner of Sec. 33 Township 31 Range 22

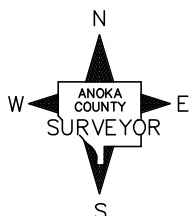
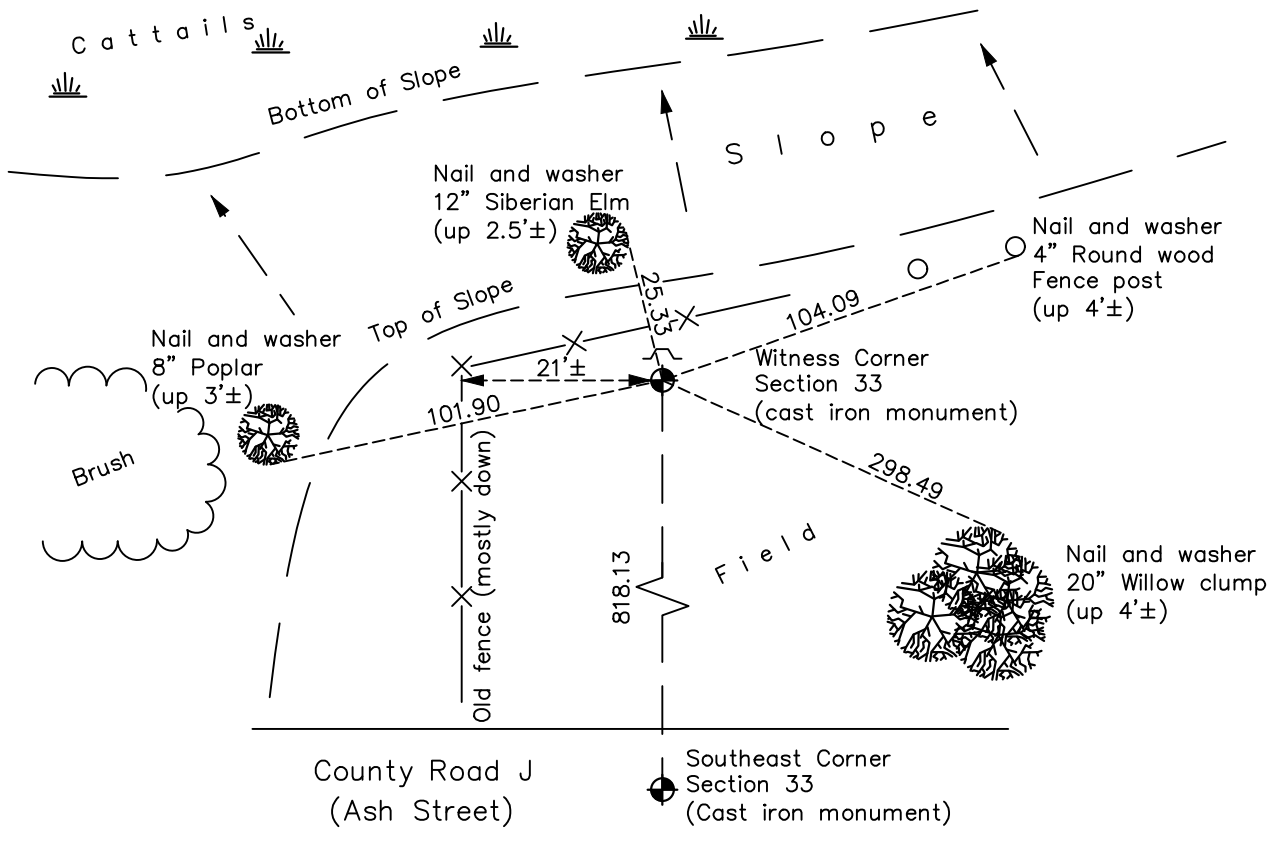
(on east line of section)

On the 3rd day of May, 1971, the described corner was evidenced by area resurvey

and to perpetuate the location of said corner, at the exact location thereof, a permanent marker was placed consisting of a cast iron monument with a sign and post on the north side

AND on the 8th day of June, 2021, said permanent marker was found down 0.1'± and the ties were updated

Updated reference ties are as shown below.



Revision Date
8/3/21

N.A.D. 1983 Coordinates
(1996 Adjustment)

County Project Coordinates	
Northing	<u>133243.2778</u>
Easting	<u>547834.0731</u>
Date	<u>4/02/98</u>

I hereby certify that this United States public land survey monument record is correct and complete to the best of my knowledge and belief.

David M Zieglmeier Date 9/14/21

David Zieglmeier Anoka County Surveyor
Minnesota License Number 46179

HISTORY OF GOVERNMENT CORNER

Page No. 133A

County of Anoka

State of Minnesota

Witness Corner of Sec. 33 Township 31 Range 22
(on east line of section)

CORNER HISTORY:

May 3, 1971 – Set Cast Iron Monument with a steel sign and post 0.5'± north of monument using area resurvey. Established ties to monument.

July 10, 1973 – Found Cast Iron Monument and updated ties.

June 7, 1977 – Found Cast Iron Monument and updated ties.

August 12, 1980 – Found Cast Iron Monument and updated ties.

July 9, 1986 – Found Cast Iron Monument and updated ties.

October 30, 1991 – Found Cast Iron Monument and updated ties.

August 18, 1996 – Found Cast Iron Monument and updated ties.

April 2, 1998 – Found Cast Iron Monument and established NAD 1983 (1996 Adjustment) Anoka County Project Coordinates by Static GPS methods. Updated ties.

September 2010 – Found Cast Iron Monument down 0.1'± and updated ties.

December 27, 2016 – Found Cast Iron Monument down 0.1'± with a sign and post on the north side of monument and updated ties.

June 8, 2021 – Found Cast Iron Monument down 0.1'± with a sign and post on the north side of monument and updated ties. Verified position by VRS GPS methods.