

# CERTIFICATE OF LOCATION OF GOVERNMENT CORNER

County of Anoka

State of Minnesota

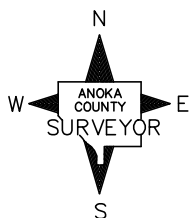
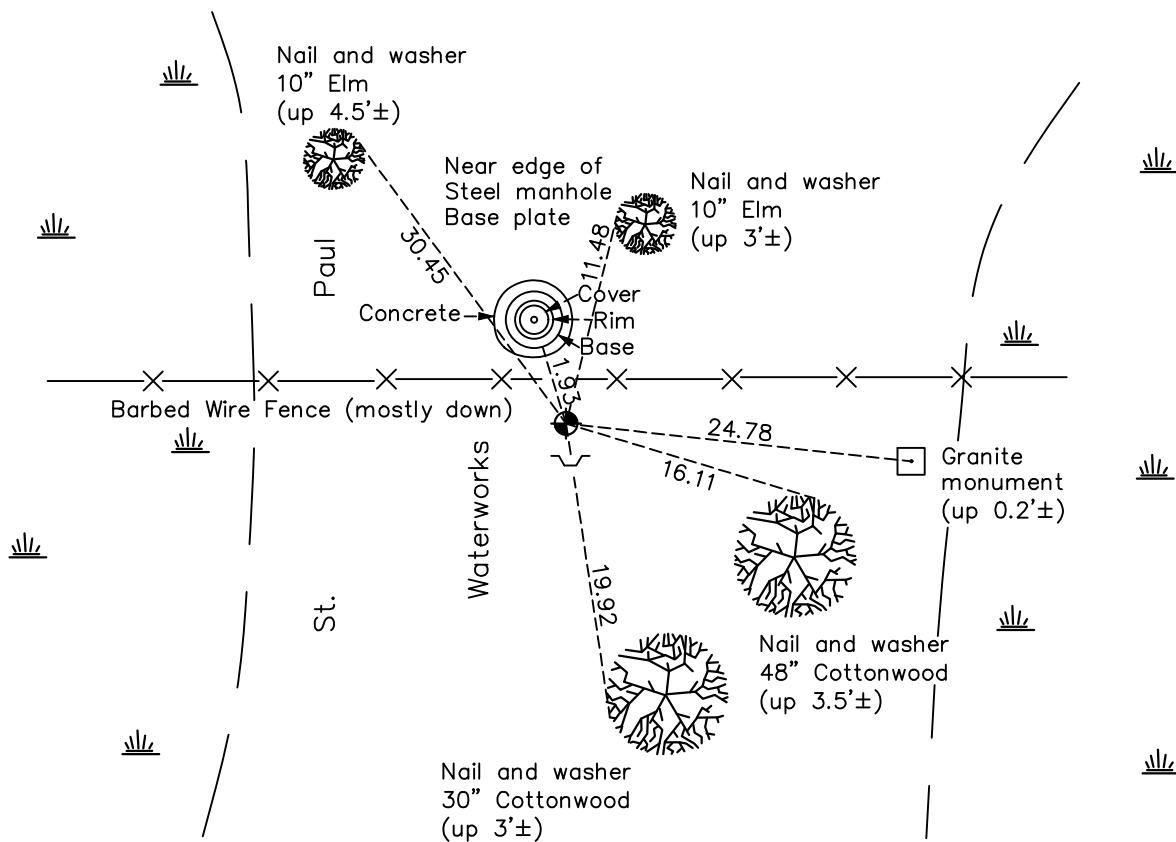
## West 1/4 Corner of Sec. 35 Township 31 Range 22

On the 13th day of September, 1991, the described corner was evidenced by a granite monument

and to perpetuate the location of said corner, at the exact location thereof, a permanent marker was placed consisting of a cast iron monument with a sign and post on the south side

AND on the 22nd day of December, 2016, said permanent marker was found down 0.2'± and the ties were updated

Updated reference ties are as shown below.



Revision Date  
2/7/17

N.A.D. 1983 Coordinates  
 (1996 Adjustment)

County Project Coordinates	
Northing	<u>135105.4862</u>
Easting	<u>553087.4749</u>
Date	<u>4/06/98</u>

I hereby certify that this United States public land survey monument record is correct and complete to the best of my knowledge and belief.

*David M Zieglsmeier* Date 8/31/21

David M. Zieglsmeier, Anoka County Surveyor  
 Minnesota License Number 46179

# HISTORY OF GOVERNMENT CORNER

Page No. 135

County of Anoka

State of Minnesota

## West 1/4 Corner of Sec. 35 Township 31 Range 22

### **CORNER HISTORY:**

September 13, 1946 – Cartwright found an Iron Pipe and a Granite Monument which was subsequently determined to be on the right-of-way of the St. Paul Waterworks property. The Iron Pipe was determined to be the W1/4 corner. Established ties to granite monument as witness corner.

January 14, 1974 – Found Iron Pipe and established ties to pipe.

January 4, 1978 – Found Iron Pipe and Granite Monument and updated ties to granite monument.

May 16, 1980 – Replaced 1/2” Iron Pipe with a Cast Iron Monument set flush with the surface. Set sign and post on the south side of monument and established ties to monument. Also found and straightened granite monument as Witness corner to W1/4 corner.

July 24, 1986 – Found Cast Iron Monument and updated ties.

November 13, 1991 – Found Cast Iron Monument and updated ties.

August 18, 1996 – Found Cast Iron Monument and updated ties.

April 6, 1998 – Found Cast Iron Monument and established NAD 1983 (1996 Adjustment) Anoka County Project Coordinates by Static GPS methods. Updated ties.

September 2010 – Found Cast Iron Monument flush with the surface and updated ties.

December 22, 2016 – Found Cast Iron Monument down 0.2'± with a sign and post on the south side of monument and updated ties.