

CERTIFICATE OF LOCATION OF GOVERNMENT CORNER

County of Anoka

State of Minnesota

Meander Corner of Sec. 35 Township 31 Range 22

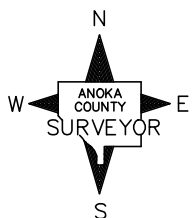
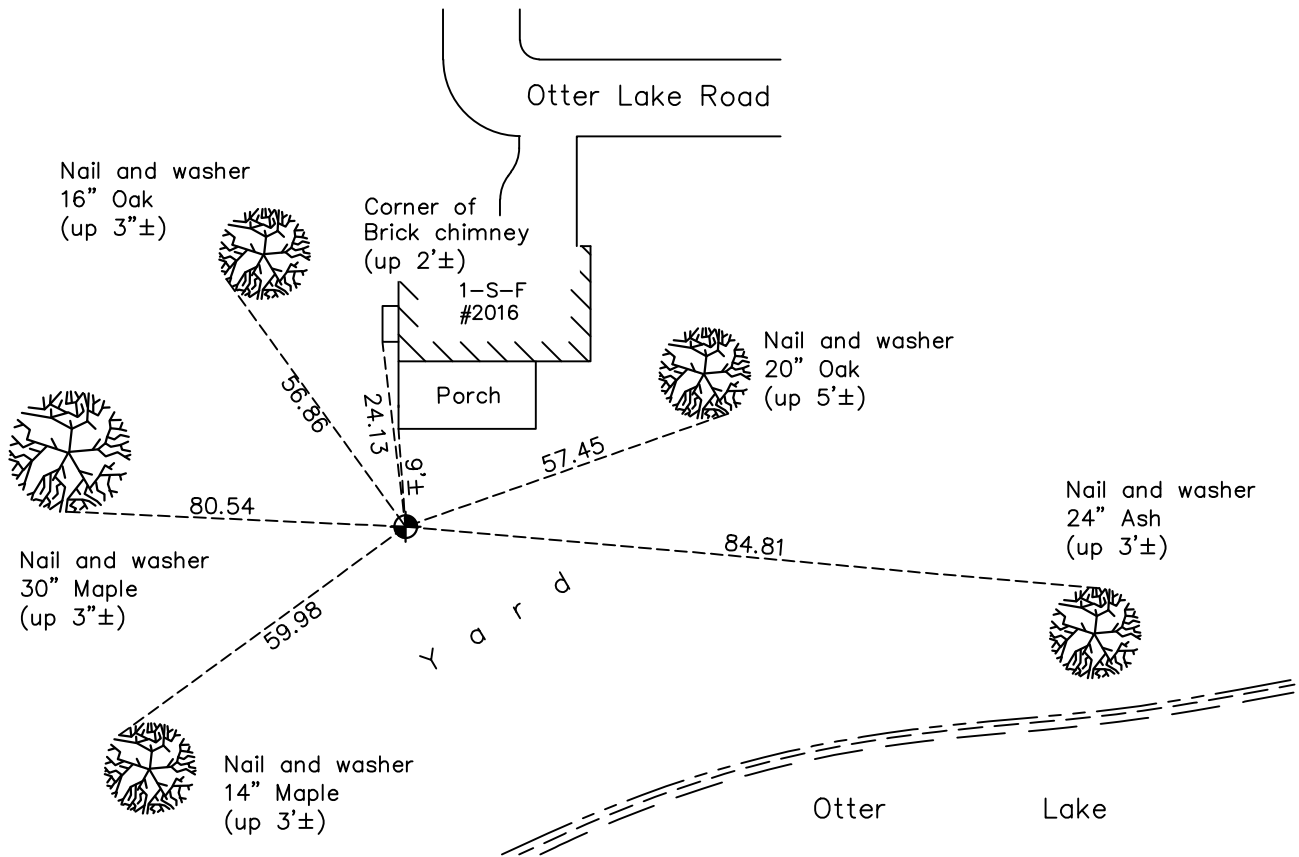
(on east line of section)

On the 6th day of May, 1963, the described corner was evidenced by a 1" iron pipe

and to perpetuate the location of said corner, at the exact location thereof, a permanent marker was placed consisting of a cast iron monument

AND on the 11th day of May, 2021, said permanent marker was found down 0.7'± and the ties were updated

Updated reference ties are as shown below.



Revision Date
 08/04/2021

N.A.D. 1983 Coordinates
 (1996 Adjustment)

County Project Coordinates	
Northing	135171.6059
Easting	558312.4037
Date	6/27/96

I hereby certify that this United States public land survey monument record is correct and complete to the best of my knowledge and belief.
David M Zieglmeier Date 8/31/21
 David Zieglmeier Anoka County Surveyor
 Minnesota License Number 46179

HISTORY OF GOVERNMENT CORNER

Page No. 136

County of Anoka

State of Minnesota

Meander Corner of Sec. 35 Township 31 Range 22 (on east line of section)

CORNER HISTORY:

August 2, 1946 – Cartwright found Concrete Monument. Established ties to monument.

May 6, 1963 – Found 1" Iron Pipe down 1'± that fits ties to Concrete Monument by H.A.C. Dug down 3.5' but found no evidence of concrete monument. Replaced iron pipe with a Cast Iron Monument flush with the surface and updated ties.

August 26, 1968 – Found Cast Iron Monument and updated ties.

July 3, 1973 – Found Cast Iron Monument and updated ties.

June 7, 1977 – Found Cast Iron Monument and updated ties.

June 7, 1983 – Found Cast Iron Monument down 3'± after home construction. Raised cast iron monument to flush with the surface and updated ties.

July 30, 1986 – Found Cast Iron Monument and updated ties.

October 17, 1991 – Found Cast Iron Monument and updated ties.

June 27, 1996– Found Cast Iron Monument and established NAD 1983 (1996 Adjustment) Anoka County Project Coordinates by Static GPS methods. Updated ties.

July 19, 2010 – Found Cast Iron Monument down 0.7'± and updated ties.

January 30, 2017 – Found Cast Iron Monument down 0.7'± and verified location of corner by VRS GPS methods. Updated ties.

May 11, 2021 – Found Cast Iron Monument down 0.7'± and updated ties.