

CERTIFICATE OF LOCATION OF GOVERNMENT CORNER

County of Anoka

State of Minnesota

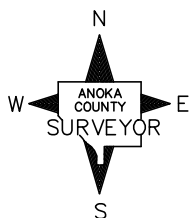
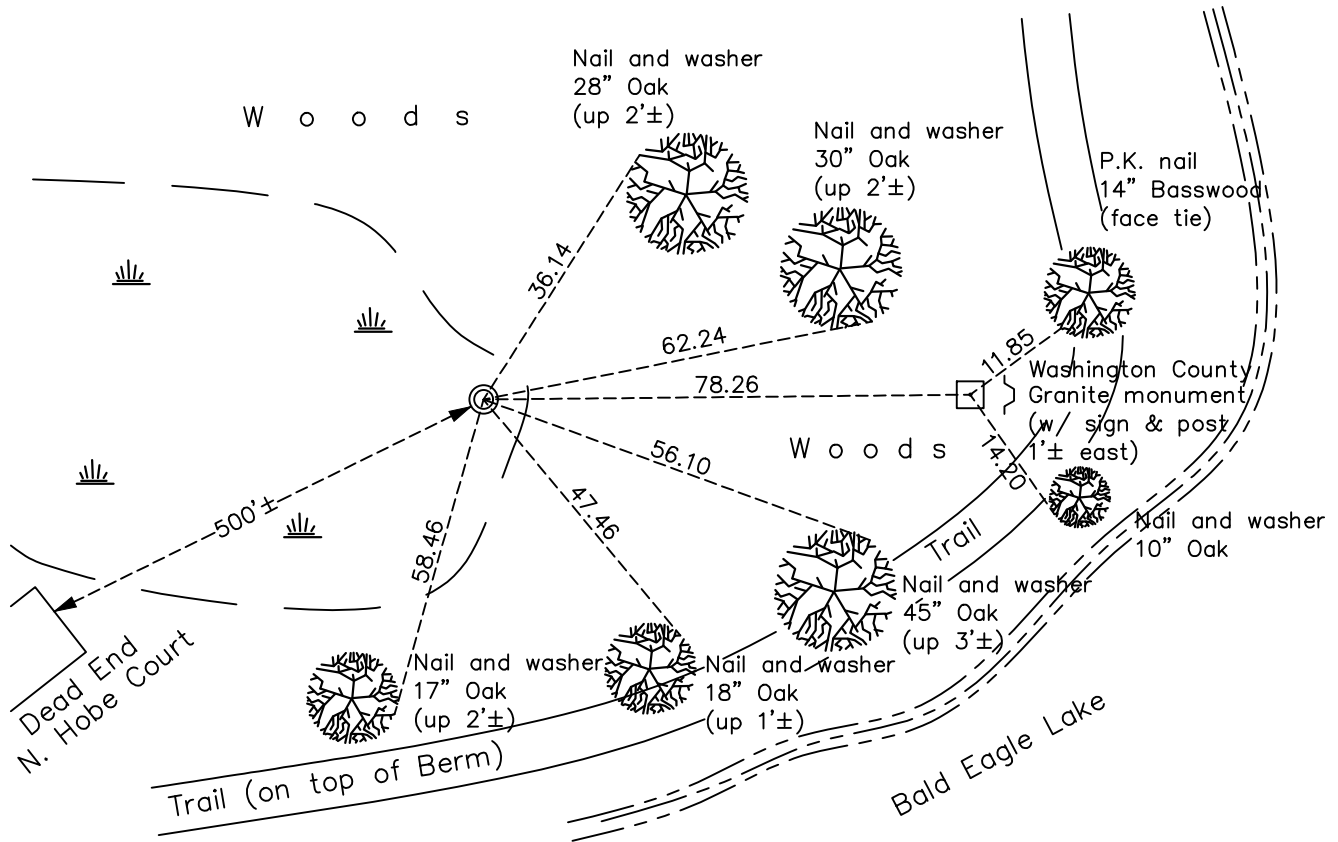
Southeast Corner of Sec. 36 Township 31 Range 22

On the 15th day of July, 1960, the described corner was evidenced by a 3/4" iron pipe

and to perpetuate the location of said corner, at the exact location thereof, a permanent marker was placed consisting of a red and white iron pipe

AND on the 17th day of May, 2021, said permanent marker was found leaning slightly east and the ties were updated (measurements were taken to base of pipe)

Updated reference ties are as shown below.



Revision Date
8/4/21

N.A.D. 1983 Coordinates
(1996 Adjustment)

County Project Coordinates	
Northing	<u>132386.8516</u>
Easting	<u>563556.5235</u>
Date	<u>4/28/98</u>

I hereby certify that this United States public land survey monument record is correct and complete to the best of my knowledge and belief.
David M Zieglmeier Date 8/31/21
 David Zieglmeier Anoka County Surveyor
 Minnesota License Number 46179

HISTORY OF GOVERNMENT CORNER

Page No. 139

County of Anoka

State of Minnesota

Southeast Corner of Sec. 36 Township 31 Range 22

CORNER HISTORY:

July 15, 1960 – James F. Simonet set Iron Pipe for section corner at government distance of 1.20 chains on line to west. Will prove this by measuring line and check by proration later. RWA

August 13, 1964 – Found 1/2" Iron Pipe up 0.4'± set by Simonet 1.20 chains from 6" Granite Monument meander corner with drill hole in center on shore of lake. Updated ties.

July 7, 1965 – Found Iron Pipe and updated ties.

July 16, 1973 – Found 1/2" Iron Pipe and updated ties.

May 4, 1977 – Replaced 1/2" Iron Pipe with a Red and White Iron Pipe and updated ties.

July 13, 1977 – Found Granite Monument meander corner has moved northwesterly 0.2'± and updated ties.

August 19, 1980 – Reset red and white Iron Pipe and updated ties.

October 21, 1991 – Found red and white Iron Pipe and updated ties.

April 28, 1998 – Found red and white Iron Pipe and established NAD 1983 (1996 Adjustment) Anoka County Project Coordinates by Static GPS methods. Updated ties.

September 15, 2010 – Found red and white Iron Pipe leaning north and updated ties.

January 26, 2017 – Found red and white Iron Pipe leaning slightly east and updated ties to base of red and white iron pipe. Verified location of corner by VRS GPS methods. Also found Granite Monument with sign and post 1'± east and updated tie to granite.

May 17, 2021 – Found red and white Iron Pipe leaning slightly east and updated ties to base of red and white iron pipe. Verified location of corner by VRS GPS methods. Also found Granite Monument with sign and post 1'± east and updated tie to granite.