

CERTIFICATE OF LOCATION OF GOVERNMENT CORNER

County of Anoka

State of Minnesota

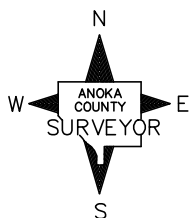
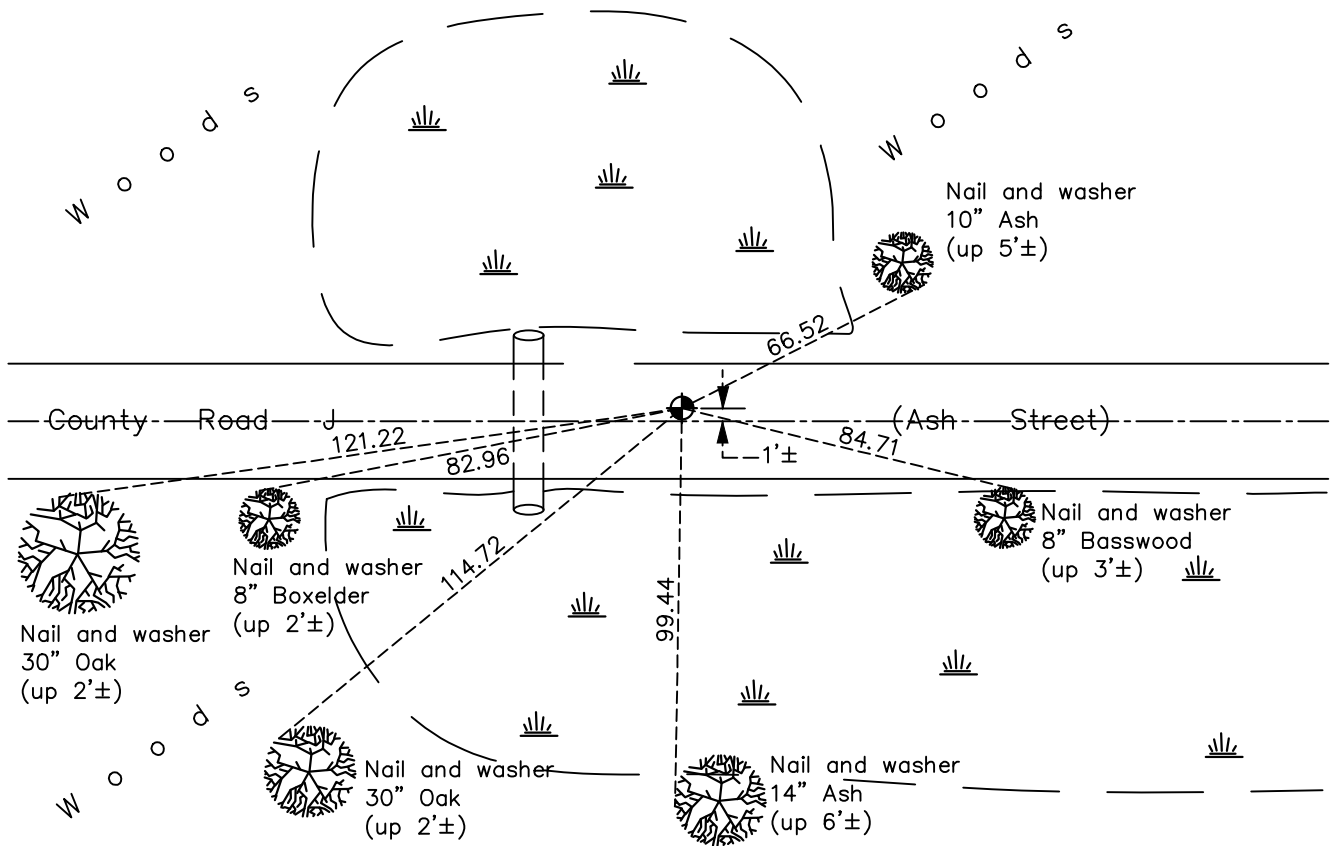
South $\frac{1}{4}$ Corner of Sec. 36 Township 31 Range 22

On the 16th day of May, 1963, the described corner was evidenced by a 1" iron pipe

and to perpetuate the location of said corner, at the exact location thereof, a permanent marker was placed consisting of a cast iron monument

AND on the 17th day of May, 2021, said permanent marker was found flush to the surface, and updated ties

Updated reference ties are as shown below.



Revision Date
8/4/21

N.A.D. 1983 Coordinates
(1996 Adjustment)

County Project Coordinates	
Northing	<u>132394.5992</u>
Easting	<u>560936.6951</u>
Date	<u>4/06/98</u>

I hereby certify that this United States public land survey monument record is correct and complete to the best of my knowledge and belief.

David M Zieglmeier Date 8/31/21

David Zieglmeier Anoka County Surveyor
Minnesota License Number 46179

HISTORY OF GOVERNMENT CORNER

Page No. 140

County of Anoka

State of Minnesota

South 1/4 Corner of Sec. 36 Township 31 Range 22

CORNER HISTORY:

June 27, 1946 – Cartwright found monument, type unknown, and established ties to monument.

May 16, 1963 – Found 1” iron pipe down 0.1'± using Cartwright ties. Set nails and washers 2.00' north and east of iron pipe and updated ties.

June 30, 1965 – Found 1” iron pipe and updated ties.

September 25, 1969 – Replaced 1” iron pipe with a cast iron monument set flush with the surface. Set P.K. nails 2.00'± north and east of monument and updated ties.

July 16, 1973 – Found cast iron monument and updated ties.

June 7, 1977 – Found cast iron monument and updated ties.

August 14, 1980 – Found cast iron monument and updated ties.

July 9, 1986 – Found cast iron monument and updated ties.

June 4, 1990 – Updated ties and removed cast iron monument prior to road construction.

August 23, 1990 – Set cast iron monument flush with the surface after road construction using ties. Updated ties.

October 18, 1991 – Found cast iron monument and updated ties.

July 14, 1992 – Updated ties prior to road construction.

June 24, 1996 – Found cast iron monument and updated ties.

April 6, 1998 – Found cast iron monument and established NAD 1983 (1996 Adjustment) Anoka County Project Coordinates by Static GPS methods. Updated ties.

July 19, 2010 – Found cast iron monument and updated ties.

June 20, 2017 – Replaced broken cast iron monument, leaning west, with a new cast iron monument. Verified location of corner by Static and VRS GPS methods. Was unable to update ties until Winter.

December 8, 2017 – Found cast iron monument and updated ties.

May 17, 2021 – Found cast iron monument and updated ties. Verified location of corner by VRS GPS methods.