

CERTIFICATE OF LOCATION OF GOVERNMENT CORNER

County of Anoka

State of Minnesota

Witness Corner of Sec. 35 Township 31 Range 22

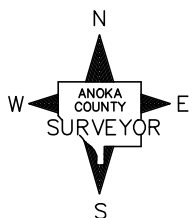
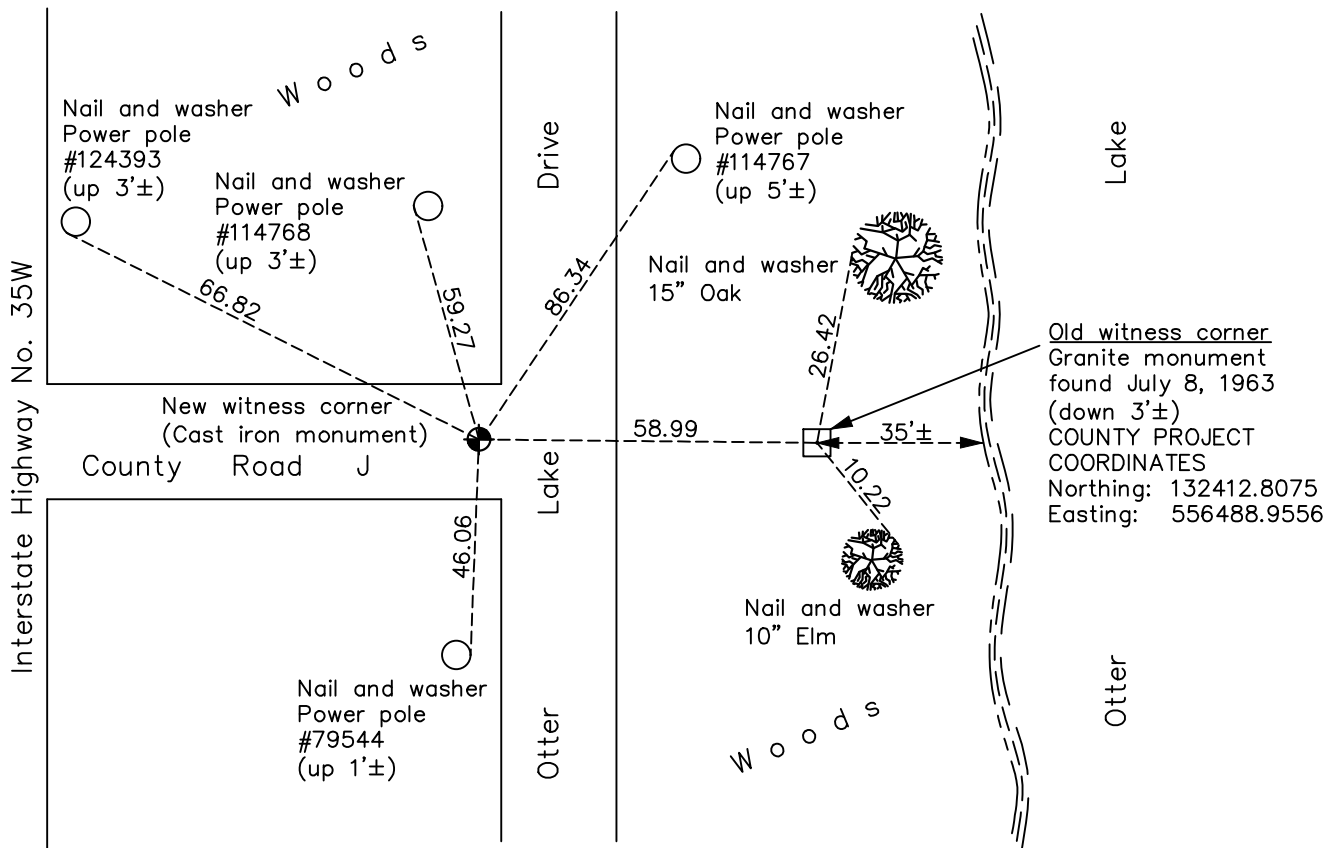
(on south line of SE 1/4)

On the 6th day of July, 1998, the described corner was evidenced by area resurvey

and to perpetuate the location of said corner, at the exact location thereof, a permanent marker was placed consisting of a cast iron monument

AND on the 12th day of May, 2021, said permanent marker was Found flush with the surface the ties were updated

Updated reference ties are as shown below.



N.A.D. 1983 Coordinates
(1996 Adjustment)

County Project Coordinates	
Northing	<u>132413.6193</u>
Easting	<u>556429.9725</u>
Date	<u>7/06/98</u>

Revision Date
8/4/21

I hereby certify that this United States public land survey monument record is correct and complete to the best of my knowledge and belief.
David M Zieglmeier Date 8/31/21
 David Zieglmeier Anoka County Surveyor
 Minnesota License Number 46179

HISTORY OF GOVERNMENT CORNER

Page No. 142

County of Anoka

State of Minnesota

Witness Corner of Sec. 35 Township 31 Range 22
(on south line of SE 1/4)

CORNER HISTORY:

July 8, 1963 – Found 8” Square Granite Monument with drill hole in center down 1’± (north line NE1/4 Sec 4, T30, R22, Ramsey Co. M.C. #19). Established ties to monument.

June 30, 1965 – Found Granite Monument in bottom of 2’± deep hole and updated ties.

March 21, 1966 – Found Granite Monument and updated ties prior to road construction.

August, 1968 – Found Granite Monument and updated ties.

July 3, 1973 – Found Granite Monument and updated ties.

June 8, 1977 – Found Granite Monument and updated ties.

July 6, 1998– Set Cast Iron Monument in new location and established NAD 1983 (1996 Adjustment) Anoka County Project Coordinates by Static GPS methods. Updated ties. Also established coordinates for granite monument, down 3’±.

July 9, 2010 – Found Cast Iron Monument down 0.2’± and updated ties.

December 22, 2016 – Found Cast Iron Monument down 0.5’± and verified location of corner by Static GPS methods. Also found Granite Monument and updated ties to both monuments.

June 25, 2018 – Found Cast Iron Monument down 0.5’± and updated ties.

August 15, 2018 – Set construction ties prior to road construction.

September 5, 2018 – Set Cast Iron Monument flush with surface after road construction using construction ties. Updated ties.

May 12, 2021 – Found Cast Iron Monument flush with surface, updated ties. Verified location of corner by VRS GPS methods.