

CERTIFICATE OF LOCATION OF GOVERNMENT CORNER

County of Anoka

State of Minnesota

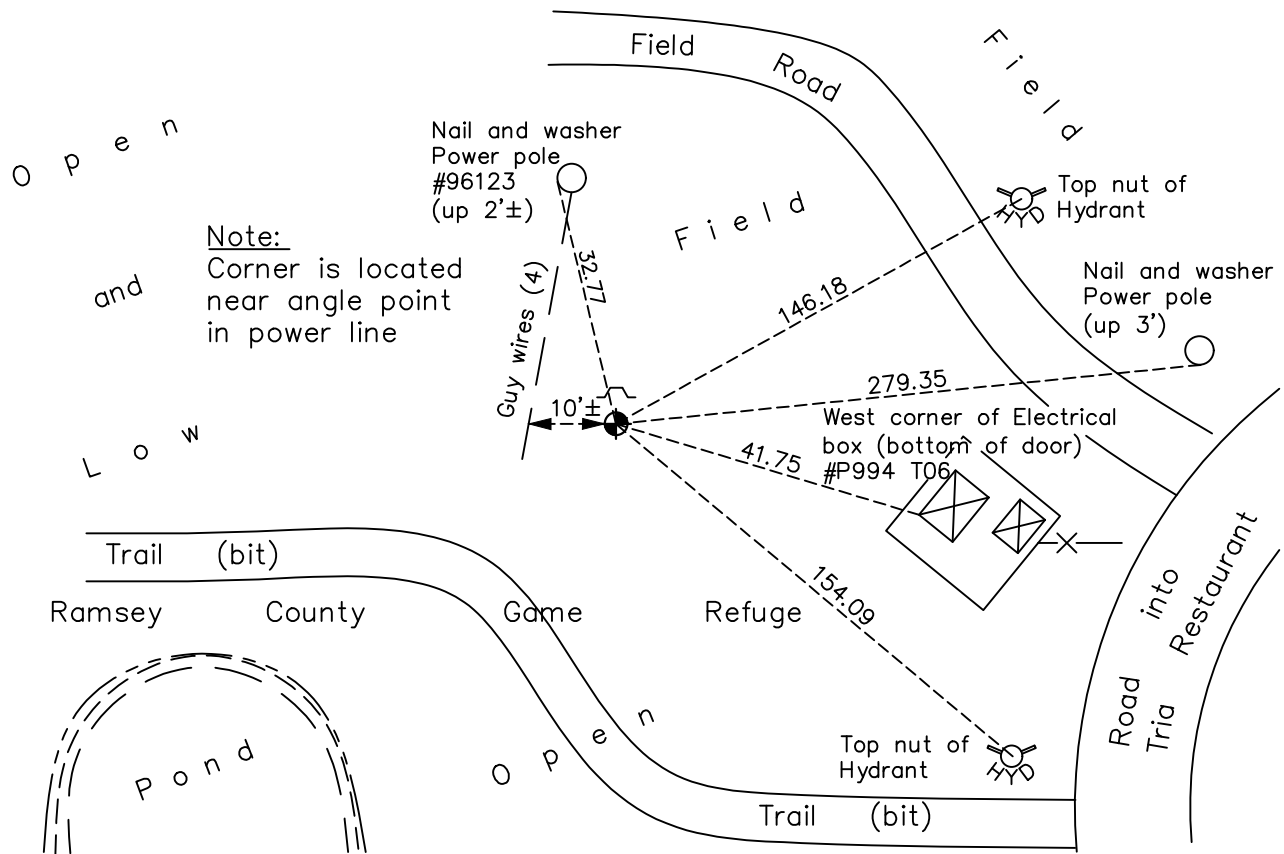
Southwest Corner of Sec. 35 Township 31 Range 22

On the 13th day of August, 1964, the described corner was evidenced by Cartwright ties

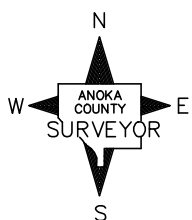
and to perpetuate the location of said corner, at the exact location thereof, a permanent marker was placed consisting of a cast iron monument with a sign and post on the north side

AND on the 1st day of June, 2021, said permanent marker was found down 0.5'± and the ties were updated

Updated reference ties are as shown below.



Note:
Corner is located near angle point in power line



Revision Date
8/4/21

N.A.D. 1983 Coordinates
(1996 Adjustment)

County Project Coordinates	
Northing	132459.3730
Easting	553106.3389
Date	4/06/98

I hereby certify that this United States public land survey monument record is correct and complete to the best of my knowledge and belief.
David M Zieglmeier Date 8/31/21
 David Zieglmeier Anoka County Surveyor
 Minnesota License Number 46179

HISTORY OF GOVERNMENT CORNER

Page No. 143

County of Anoka

State of Minnesota

Southwest Corner of Sec. 35 Township 31 Range 22

CORNER HISTORY:

September 17, 1946 – Cartwright found Concrete Monument. Established ties to monument.

August 13, 1964 – Found 3/4" Iron Pipe down 0.2'± which fits Cartwright ties. Concrete Monument not found. Replaced Iron Pipe with Cast Iron Monument set up 0.1'±. Updated ties.

June 23, 1965 – Found Cast Iron Monument and updated ties.

July 10, 1973 – Found Cast Iron Monument and updated ties.

June 8, 1977 – Found Cast Iron Monument and updated ties.

July 9, 1986 – Found Cast Iron Monument and updated ties.

October 1, 1987 – Set construction ties and removed Cast Iron Monument prior to road construction.

July 25, 1988 – Set Cast Iron Monument after road construction using construction ties. Updated ties.

October 22, 1991 – Found Cast Iron Monument and updated ties.

June 25, 1996 – Found Cast Iron Monument and updated ties.

April 6, 1998 – Found Cast Iron Monument and established NAD 1983 (1996 Adjustment) Anoka County Project Coordinates by Static GPS methods. Updated ties.

July 20, 2010 – Found Cast Iron Monument down 0.5'± with a sign and post on the north side. Updated ties.

December 15, 2016 – Found Cast Iron Monument down 0.5'± with a sign and post on the north side. Verified location of corner by VRS GPS methods. Updated ties.

June 1, 2021 – Found Cast Iron Monument down 0.5'± with a sign and post on the north side. Verified location of corner by VRS GPS methods. Updated ties.