

CERTIFICATE OF LOCATION OF GOVERNMENT CORNER

County of Anoka

State of Minnesota

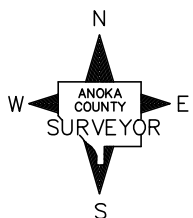
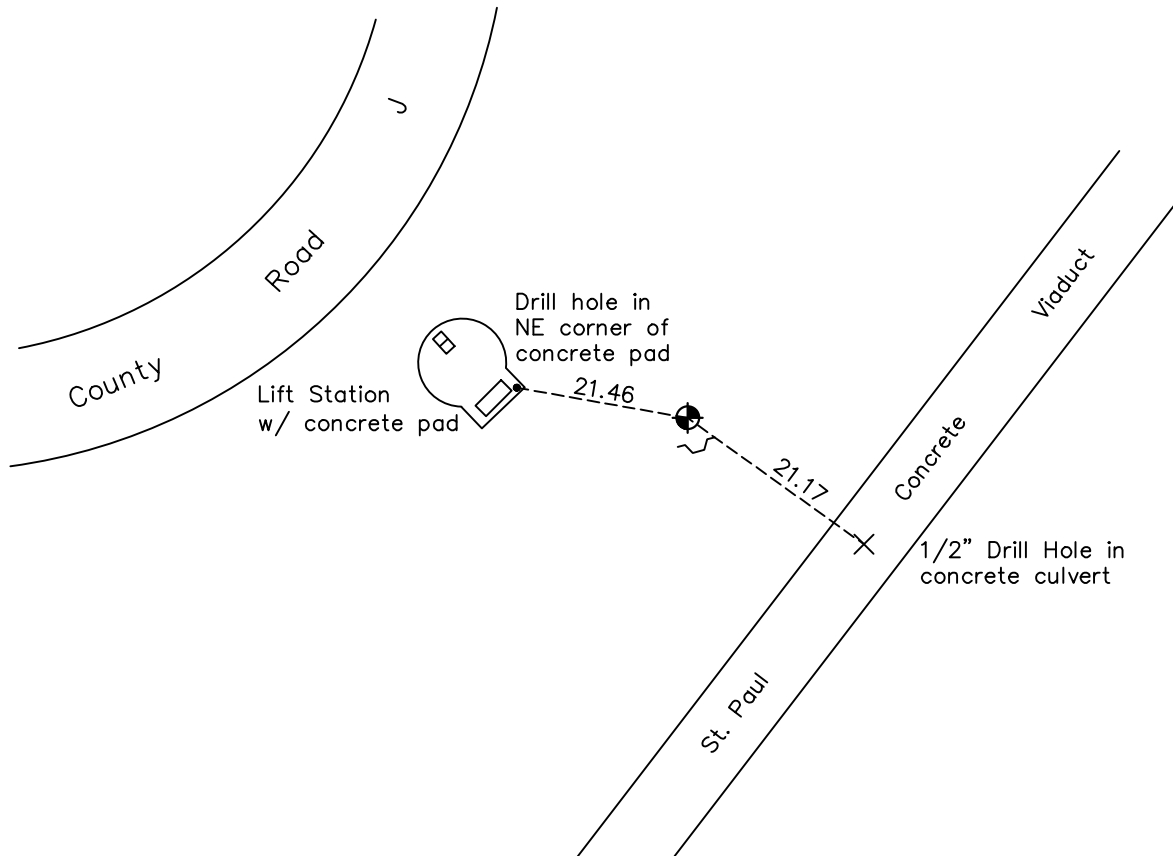
South 1/4 Corner of Sec. 34 Township 31 Range 22

On the 6th day of February, 1964, the described corner was evidenced by a 3/4" iron pipe

and to perpetuate the location of said corner, at the exact location thereof, a permanent marker was placed consisting of a cast iron monument with a sign and post on the southeast side

AND on the 1st day of June, 2021, said permanent marker was found and the ties were updated

Updated reference ties are as shown below.



Revision Date
8/4/21

N.A.D. 1983 Coordinates
 (1996 Adjustment)

County Project Coordinates	
Northing	<u>132433.5154</u>
Easting	<u>550466.4875</u>
Date	<u>3/26/98</u>

I hereby certify that this United States public land survey monument record is correct and complete to the best of my knowledge and belief.
David M Zieglmeier Date 8/31/21
 David Zieglmeier Anoka County Surveyor
 Minnesota License Number 46179

HISTORY OF GOVERNMENT CORNER

Page No. 144

County of Anoka

State of Minnesota

South 1/4 Corner of Sec. 34 Township 31 Range 22

CORNER HISTORY:

Date Unknown – Milner W. Carley established ties to monument.

February 6, 1964 – Found 3/4” Iron Pipe flush with the surface using Carley’s one remaining tie. The M.C. 67.67 west was not found. Updated ties.

June 16, 1965 – Found Iron Pipe and updated ties.

August 29, 1969 – Found Iron Pipe and updated ties.

July 3, 1973 – Found Iron Pipe and updated ties.

June 8, 1977 – Found Iron Pipe and updated ties.

July 9, 1986 – Found Cast Iron Monument with sign and post on the southeast side of monument and updated ties.

October 22, 1991 – Found Cast Iron Monument and updated ties.

June 25, 1996 – Found Cast Iron Monument and updated ties.

March 26, 1998 – Found Cast Iron Monument and established NAD 1983 (1996 Adjustment) Anoka County Project Coordinates by Static GPS methods. Updated ties.

June 25, 1996 – Found Cast Iron Monument and updated ties.

March 26, 1998 – Found Cast Iron Monument and updated ties.

August 12, 2010 – Dug down 3’±. Was unable to find cast iron monument.

March 24, 2011 – Found Cast Iron Monument and updated ties. Verified location of corner by Static GPS methods.

April 5, 2011 – Found Cast Iron Monument down 4.5’± with sign and post on the southeast side up 2’±. Set additional Cast Iron Monument on top of lower Cast Iron Monument and updated ties. Verified location of corner by VRS GPS methods.

December 19, 2016 – Found Cast Iron Monument and updated ties. Verified location of corner by VRS GPS methods. Sign and post were missing.

June 1, 2021 – Found Cast Iron Monument and updated ties. Verified location of corner by VRS GPS methods. Replaced sign and post on SE. side.