

# CERTIFICATE OF LOCATION OF GOVERNMENT CORNER

County of Anoka

State of Minnesota

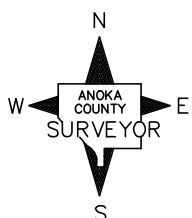
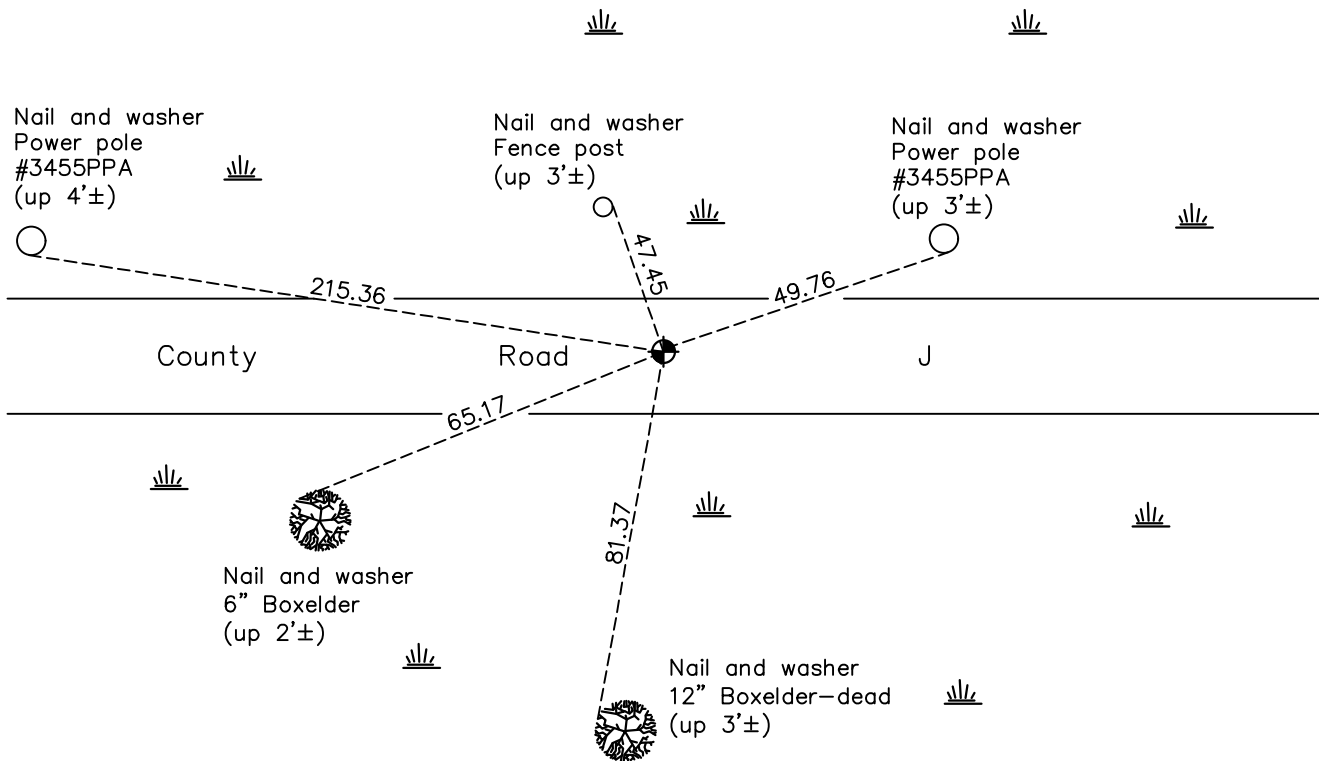
## Southwest Corner of Sec. 33 Township 31 Range 22

On the 19th day of January, 1966, the described corner was evidenced by area resurvey

and to perpetuate the location of said corner, at the exact location thereof, a permanent marker was placed consisting of a cast iron monument

AND on the 2nd day of June, 2021, said permanent marker was found flush and the ties were updated

Updated reference ties are as shown below.



Revision Date  
8/5/21

N.A.D. 1983 Coordinates  
 (1996 Adjustment)

County Project Coordinates	
Northing	132430.4386
Easting	542576.8328
Date	3/23/98

I hereby certify that this United States public land survey monument record is correct and complete to the best of my knowledge and belief.  
*David M Zieglmeier* Date 8/31/21  
 David Zieglmeier Anoka County Surveyor  
 Minnesota License Number 46179

# HISTORY OF GOVERNMENT CORNER

Page No. 147

County of Anoka

State of Minnesota

## Southwest Corner of Sec. 33 Township 31 Range 22

### **CORNER HISTORY:**

January 19, 1966 – Set P.K. nail for corner location using are resurvey. Also set P.K. nails 2.00' north and east of corner location and established ties to corner.

September 12, 1967– Set Cast Iron Monument flush with the surface and P.K. nails 2.00' north and east of monument. Updated ties.

August 27, 1969 – Found Cast Iron Monument and updated ties.

June 27, 1973 – Raised Cast Iron Monument to flush with the surface and updated ties.

January 4, 1974 – Found Cast Iron Monument and updated ties.

August 18, 1976 – Found Cast Iron Monument and updated ties.

July 8, 1986 – Found Cast Iron Monument and updated ties.

October 24, 1991– Found Cast Iron Monument and updated ties.

July 8, 1996– Found Cast Iron Monument and updated ties.

March 23, 1998– Found Cast Iron Monument and established NAD 1983 (1996 Adjustment) Anoka County Project Coordinates by Static GPS methods. Updated ties.

May 4, 1998 – Set construction ties and removed Cast Iron Monument prior to road construction.

November 5, 1998 – Found Cast Iron Monument and updated ties.

August 9, 2010 – Found Cast Iron Monument and updated ties.

January 23, 2017– Found Cast Iron Monument and updated ties. Verified location of corner by VRS GPS methods.

June 2, 2021– Found Cast Iron Monument flush and updated ties. Verified location of corner by VRS GPS methods.