

# CERTIFICATE OF LOCATION OF GOVERNMENT CORNER

County of Anoka

State of Minnesota

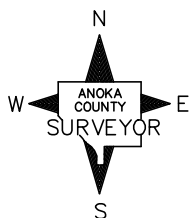
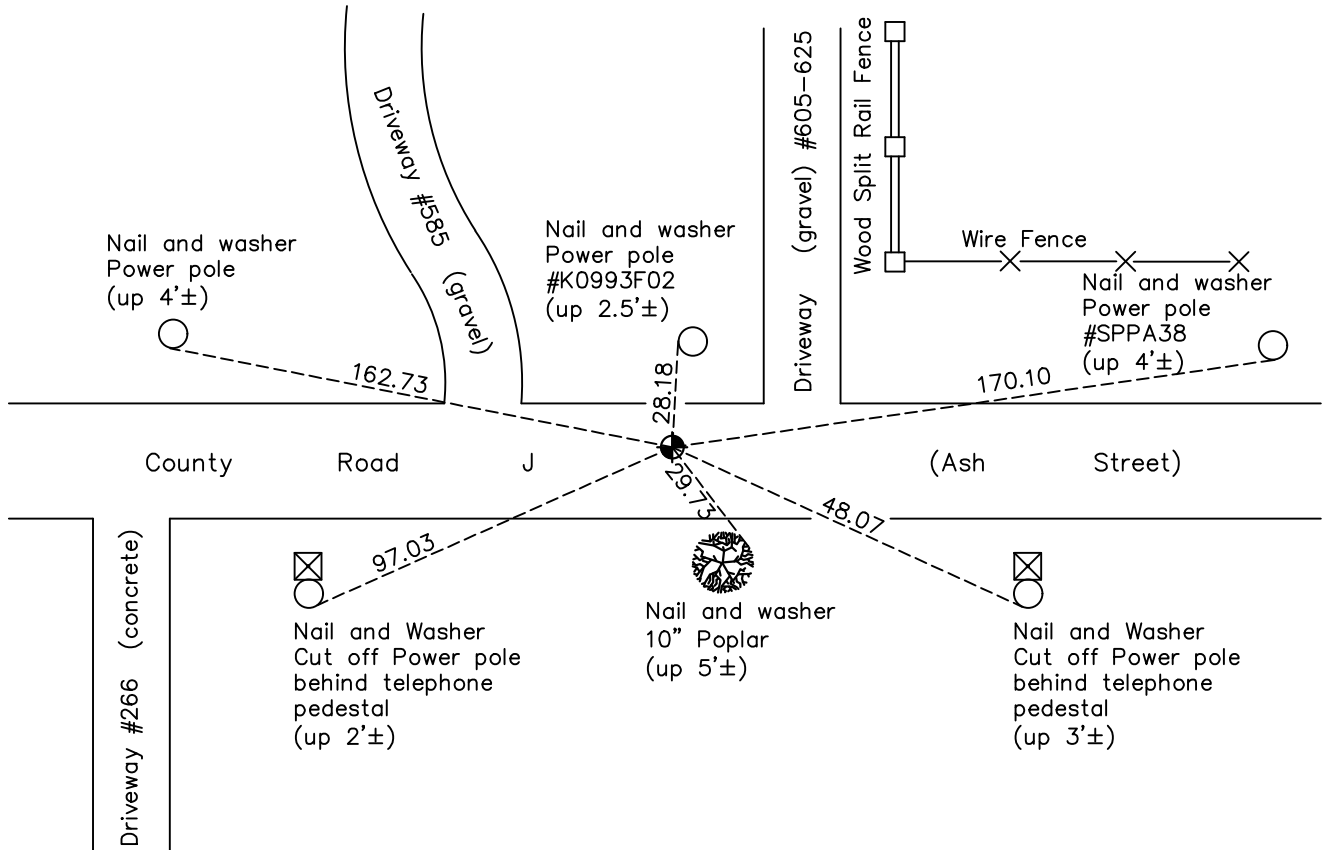
## South 1/4 Corner of Sec. 32 Township 31 Range 22

On the 19th day of January, 1966, the described corner was evidenced by area resurvey

and to perpetuate the location of said corner, at the exact location thereof, a permanent marker was placed consisting of a cast iron monument

AND on the 2nd day of June, 2021, said permanent marker was found flush with the surface and the ties were updated

Updated reference ties are as shown below.



Revision Date  
 8/4/21

N.A.D. 1983 Coordinates  
(1996 Adjustment)

County Project Coordinates	
Northing	132429.5797
Easting	539950.4189
Date	3/23/98

I hereby certify that this United States public land survey monument record is correct and complete to the best of my knowledge and belief.

*David M Zieglmeier* Date 8/31/21

David Zieglmeier Anoka County Surveyor  
 Minnesota License Number 46179

# HISTORY OF GOVERNMENT CORNER

Page No. 148

County of Anoka

State of Minnesota

## South 1/4 Corner of Sec. 32 Township 31 Range 22

### **CORNER HISTORY:**

January 19, 1966 – Set P.K. nail for corner with P.K. nails 2.00' north and east of corner using area resurvey. Established ties to corner.

September 11, 1967 – Set Cast Iron Monument flush with the surface and 0.9'± north of centerline. Found P.K. nails 2.00' north and east of corner. Updated ties to monument.

August 27, 1969– Found Cast Iron Monument and updated ties.

June 27, 1973 – Found Cast Iron Monument and updated ties.

August 20, 1976– Found Cast Iron Monument and updated ties.

April 18, 1990– Found Cast Iron Monument and updated ties prior to road construction.

May 30, 1990 – Removed Cast Iron Monument prior to road construction.

August 17, 1990 – Reset Cast Iron Monument after road construction and updated ties.

June 25, 1996 – Found Cast Iron Monument and updated ties.

March 23, 1998 – Found Cast Iron Monument and established NAD 1983 (1996 Adjustment) Anoka County Project Coordinates by Static GPS methods. Updated ties.

August 3, 2010 – Found Cast Iron Monument down 0.1'± and updated ties.

January, 2017– Found Cast Iron Monument down 0.1'± and verified location of corner by VRS GPS methods. Updated ties.

June 9, 2017 – Set construction ties and removed Cast Iron Monument prior to road construction.

July 6, 2017 – Set Cast Iron Monument flush with the surface after road construction using construction ties. Verified location of corner by Static and VRS GPS methods. Updated ties.

August 15, 2017 – Found Cast Iron Monument flush with the surface and updated ties.

June 2, 2021 – Found Cast Iron Monument flush with the surface and updated ties. Verified location of corner by VRS GPS methods.