

CERTIFICATE OF LOCATION OF GOVERNMENT CORNER

County of Anoka

State of Minnesota

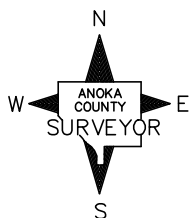
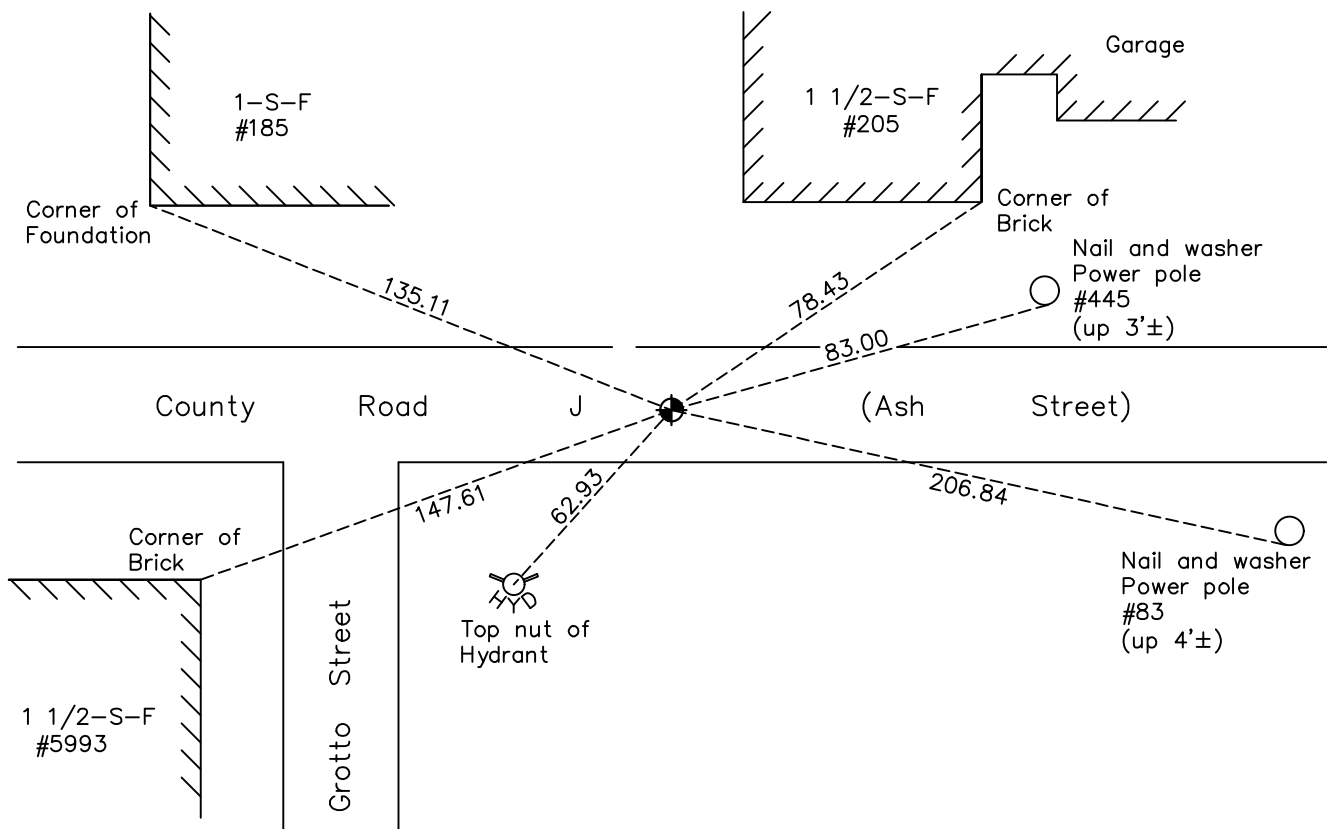
South 1/4 Corner of Sec. 31 Township 31 Range 22

On the 10th day of January, 1966, the described corner was evidenced by area resurvey

and to perpetuate the location of said corner, at the exact location thereof, a permanent marker was placed consisting of a cast iron monument

AND on the 2nd day of June, 2021, said permanent marker was found flush with the surface and the ties were updated

Updated reference ties are as shown below.



Revision Date
8/5/21

N.A.D. 1983 Coordinates
 (1996 Adjustment)

County Project Coordinates	
Northing	132432.0645
Easting	534681.0857
Date	2/04/98

I hereby certify that this United States public land survey monument record is correct and complete to the best of my knowledge and belief.
David M Zieglmeier Date 8/31/21
 David Zieglmeier Anoka County Surveyor
 Minnesota License Number 46179

HISTORY OF GOVERNMENT CORNER

Page No. 150

County of Anoka

State of Minnesota

South 1/4 Corner of Sec. 31 Township 31 Range 22

CORNER HISTORY:

January 10, 1966 – Set P.K. Nail using area resurvey and established ties to nail. Also set P.K. nails 2.00' north and east of corner.

September 11, 1967 – Replaced P.K. nail with a Cast Iron Monument set flush with the surface and 0.9'± south of centerline and updated ties.

June 26, 1973– Found Cast Iron Monument and updated ties.

August 20, 1976– Found Cast Iron Monument and updated ties.

July 8, 1986– Found Cast Iron Monument and updated ties.

October 24, 1991 – Found Cast Iron Monument and updated ties.

July 14, 1992– Found Cast Iron Monument and updated ties prior to road construction.

August 17, 1993 – Found Cast Iron Monument and updated ties.

June 25, 1996 – Found Cast Iron Monument and updated ties.

February 4, 1998 – Found Cast Iron Monument and established NAD 1983 (1996 Adjustment) Anoka County Project Coordinates by Static GPS methods. Updated ties.

July 15, 2010 – Found Cast Iron Monument flush with the surface and updated ties.

January 19, 2017 – Found Cast Iron Monument flush with the surface and verified location of corner by VRS GPS methods. Updated ties.

June 2, 2021 – Found Cast Iron Monument flush with the surface and verified location of corner by VRS GPS methods. Updated ties.