

CERTIFICATE OF LOCATION OF GOVERNMENT CORNER

County of Anoka

State of Minnesota

North 1/4 Corner of Sec. 2 Township 30 Range 23

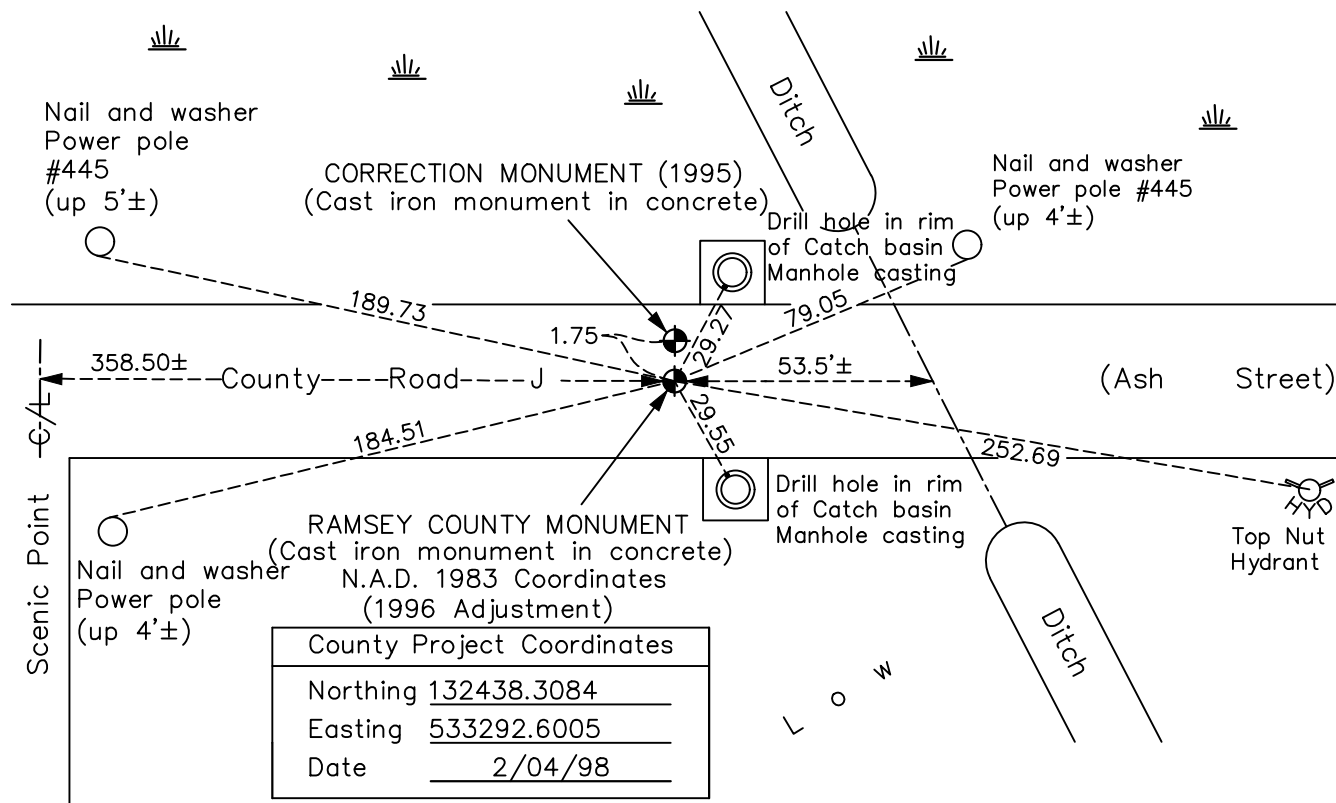
(Ramsey County Monument)

On the 29th day of October, 1964, the described corner was evidenced by a 6" square granite monument

and to perpetuate the location of said corner, at the exact location thereof, a permanent marker was placed consisting of the same granite monument

AND on the 4th day of June, 2021, said permanent marker was found flush to be a Ramsey County cast iron monument set in concrete

Updated reference ties are as shown below.



County Project Coordinates	
Northing	132438.3084
Easting	533292.6005
Date	2/04/98

ANOKA COUNTY SURVEYOR

Revision Date **8/5/21**

'CORRECTION MONUMENT (1995)'
N.A.D. 1983 Coordinates
(1996 Adjustment)

County Project Coordinates	
Northing	132440.0623
Easting	533292.6582
Date	2/04/98

I hereby certify that this United States public land survey monument record is correct and complete to the best of my knowledge and belief.

David M Zieglsmeier Date 8/31/21

David M. Zieglsmeier, Anoka County Surveyor
Minnesota License Number 46179

HISTORY OF GOVERNMENT CORNER

Page No. 152

County of Anoka

State of Minnesota

North 1/4 Corner of Sec. 2 Township 30 Range 23 (Ramsey County Monument)

CORNER HISTORY:

October 29, 1964 – Found 6” square Granite Monument with a drill hole in the center and flush with the surface. Monument is 1.5'± north of centerline. Established ties to monument.

June 16, 1965 – Found Granite Monument and updated ties.

August 29, 1969 – Found Granite Monument and updated ties. Set P.K. nails 2.00' north and east of monument.

June 26, 1973 – Found Granite Monument and updated ties.

August 20, 1976 – Found Granite Monument and updated ties.

August 7, 1980 – Found Granite Monument and updated ties.

October 26, 1991 – Found Granite Monument and updated ties.

June 25, 1996 – Found Granite Monument and updated ties.

February 4, 1998 – Found Granite Monument and established NAD 1983 (1996 Adjustment) Anoka County Project Coordinates by Static GPS methods. Updated ties.

July 15, 2010 – Found a Ramsey County Cast Iron Monument set in concrete (date set is unknown) and updated ties.

January 19, 2017 – Found Ramsey County Cast Iron Monument set in concrete and verified location of corner by VRS GPS methods. Updated ties.

June 4, 2021 – Found Ramsey County Cast Iron Monument set in concrete and verified location of corner by VRS GPS methods. Updated ties.