

CERTIFICATE OF LOCATION OF GOVERNMENT CORNER

County of Anoka

State of Minnesota

Northeast Corner of Sec. 2 Township 30 Range 23

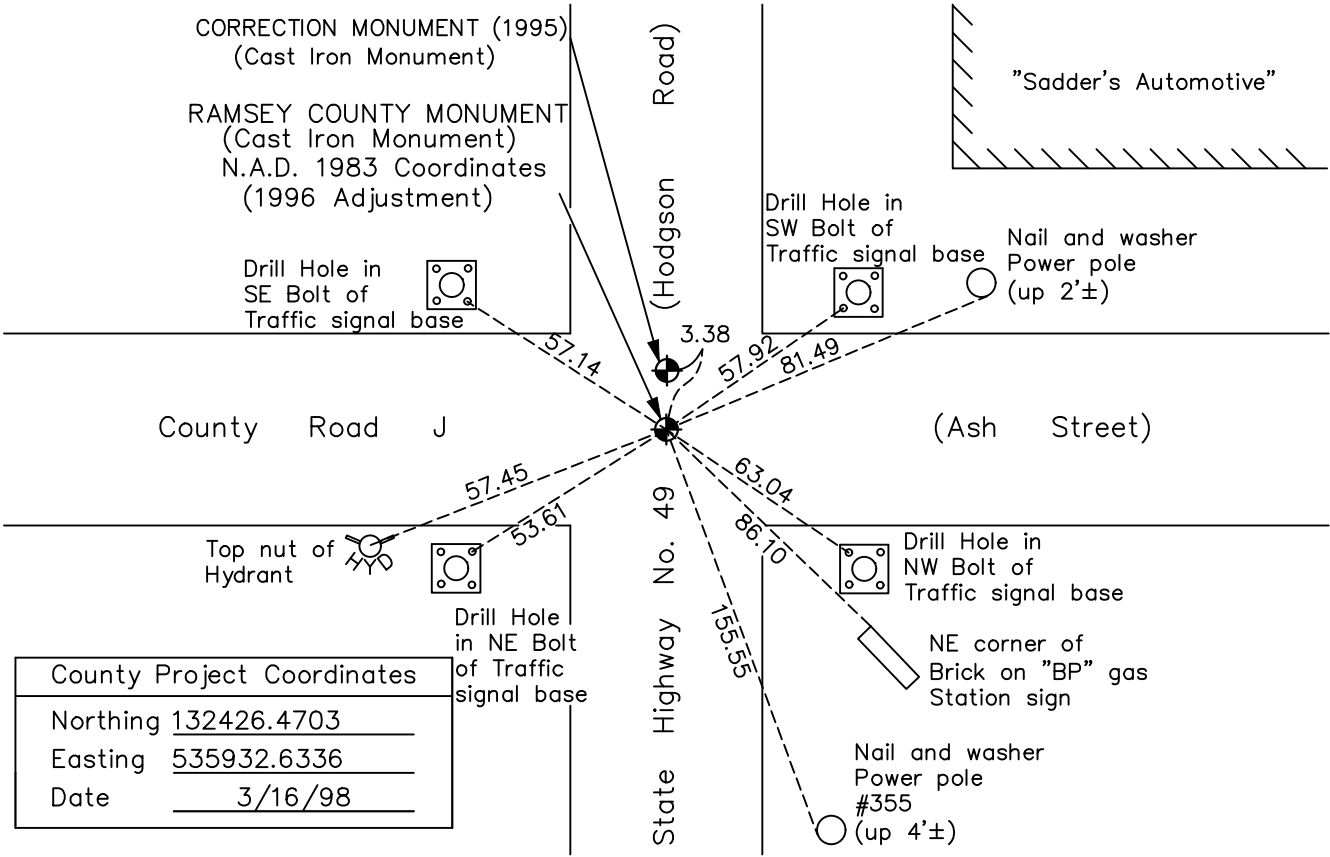
(Ramsey County monument)

On the 29th day of October, 1964, the described corner was evidenced by a 6" square granite monument

and to perpetuate the location of said corner, at the exact location thereof, a permanent marker was placed consisting of a cast iron monument

AND on the 7th day of June, 2021, said permanent marker was found down 0.5'± in were updated

Updated reference ties are as shown below.



County Project Coordinates	
Northing	132426.4703
Easting	535932.6336
Date	3/16/98

'CORRECTION MONUMENT (1995)'
N.A.D. 1983 Coordinates
(1996 Adjustment)

County Project Coordinates	
Northing	132429.7940
Easting	535932.7376
Date	3/16/98

I hereby certify that this United States public land survey monument record is correct and complete to the best of my knowledge and belief.

David M Zieglsmeier Date 8/31/21

David M. Zieglsmeier, Anoka County Surveyor
Minnesota License Number 46179

Revision Date

8/5/21

HISTORY OF GOVERNMENT CORNER

County of Anoka

State of Minnesota

Northeast Corner of Sec. 2 Township 30 Range 23 (Ramsey County monument)

CORNER HISTORY:

October 29, 1964 – Found 6” Square Granite Monument with drill hole in center. Set P.K. Nails 2.00’ north and east of monument. Established ties to monument.

June 16, 1965 – Found Granite Monument and updated ties.

August 27, 1969 – Found Granite Monument and updated ties. Set P.K. nail flush with surface on top of monument.

June 26, 1973 – Found Granite Monument and set 1/2” Iron Pipe in concrete flush with the surface on top of monument. Updated ties.

August 20, 1976 – Found Granite Monument and updated ties.

October 24, 1991 – Found Granite Monument and updated ties.

June 25, 1996 – Found Granite Monument and updated ties.

March 16, 1998– Found Granite Monument and established NAD 1983 (1996 Adjustment) Anoka County Project Coordinates by Static GPS methods. Updated ties.

August, 2010 – Found Granite Monument and updated ties.

January 17, 2017 – Found Cast Iron Monument and verified location of corner by VRS GPS methods. Updated ties.

June 7, 2021 – Found Cast Iron Monument down 0.5’± in steel tube. Verified location of corner by VRS GPS methods. Updated ties.