

CERTIFICATE OF LOCATION OF GOVERNMENT CORNER

County of Anoka

State of Minnesota

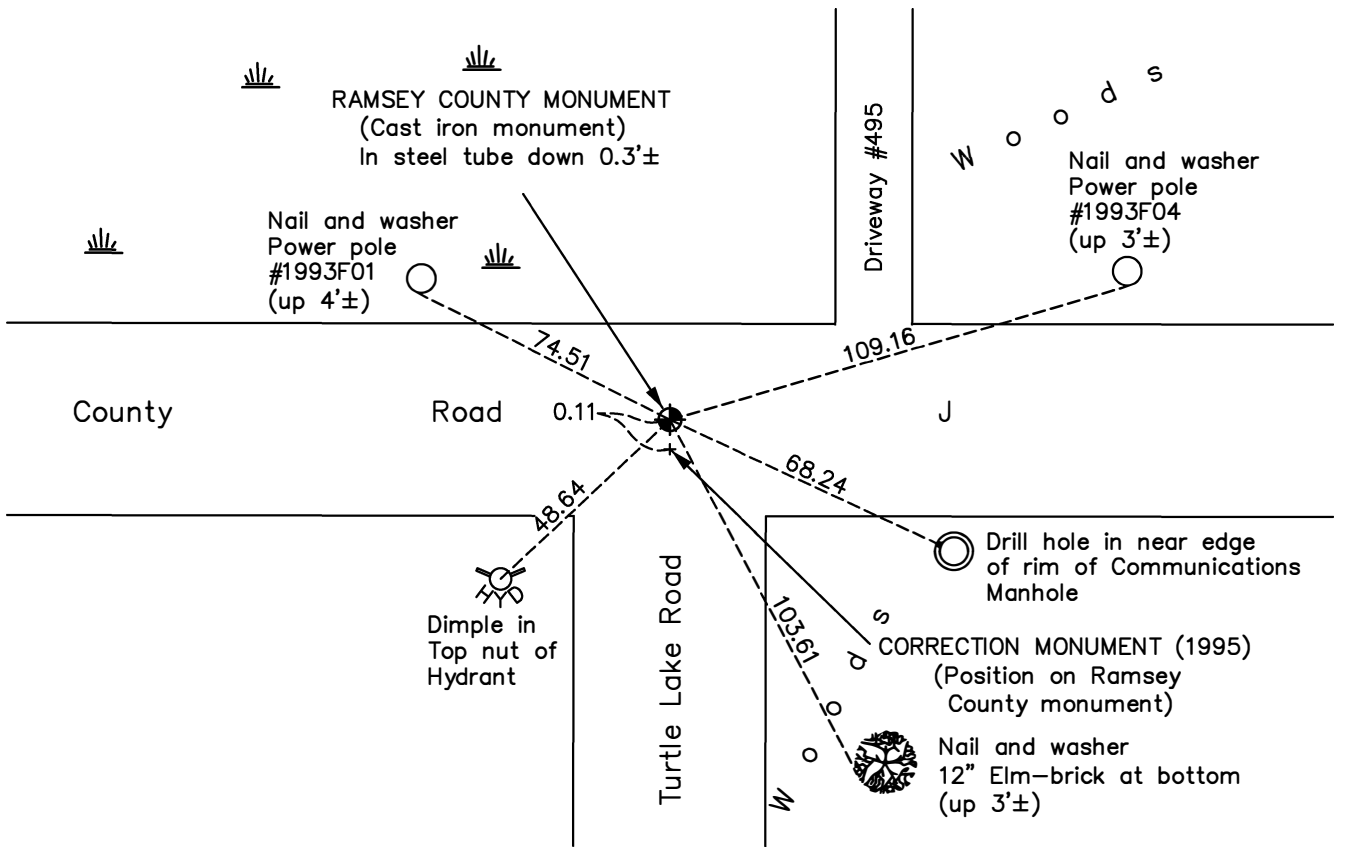
North 1/4 Corner of Sec. 1 Township 30 Range 23 (Ramsey County monument)

On the 6th day of December, 1965, the described corner was evidenced by a cast iron monument

and to perpetuate the location of said corner, at the exact location thereof, a permanent marker was placed consisting of a cast iron monument in concrete

AND on the 5th day of June, 2021, said permanent marker was found down 0.3'± and the ties were updated

Updated reference ties are as shown below.



N

 W ANOKA COUNTY SURVEYOR E
 S

Revision Date
 8/5/21

RAMSEY COUNTY MONUMENT
 N.A.D. 1983 Coordinates
 (1996 Adjustment)

County Project Coordinates	
Northing	132428.3795
Easting	538571.7702
Date	3/23/98

I hereby certify that this United States public land survey monument record is correct and complete to the best of my knowledge and belief.

David M Zieglmeier Date 8/31/21

David M. Zieglmeier, Anoka County Surveyor
 Minnesota License Number 46179

HISTORY OF GOVERNMENT CORNER

Page No. 154

County of Anoka

State of Minnesota

North 1/4 Corner of Sec. 1 Township 30 Range 23 (Ramsey County monument)

CORNER HISTORY:

December 6, 1965 – Found Cast Iron Monument labeled "Quarter Corner". Set P.K. Nails 2.00' north and east. Established ties to monument.

August 27, 1969 – Found Cast Iron Monument and updated ties.

June 27, 1973 – Found Cast Iron Monument and updated ties.

August 20, 1976 – Found Cast Iron Monument and updated ties.

July 8, 1986 – Found Cast Iron Monument in concrete and updated ties.

October 24, 1991 – Found Cast Iron Monument in concrete and updated ties.

June 25, 1996 – Found Cast Iron Monument in concrete and updated ties.

March 23, 1998 – Found Cast Iron Monument in concrete and established NAD 1983 (1996 Adjustment) Anoka County Project Coordinates by Static GPS methods. Updated ties.

August 3, 2010 – Found Cast Iron Monument down 0.1'± in concrete and updated ties.

January 20, 2017 – Found Cast Iron Monument down 0.1'± in concrete and verified location of corner by VRS GPS methods. Updated ties.

June 5, 2021 – Found Cast Iron Monument down 0.3'± in steel tube, and verified location of corner by VRS GPS methods. Updated ties.