

CERTIFICATE OF LOCATION OF GOVERNMENT CORNER

County of Anoka

State of Minnesota

Northwest Corner of Sec. 6 Township 30 Range 22

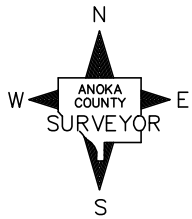
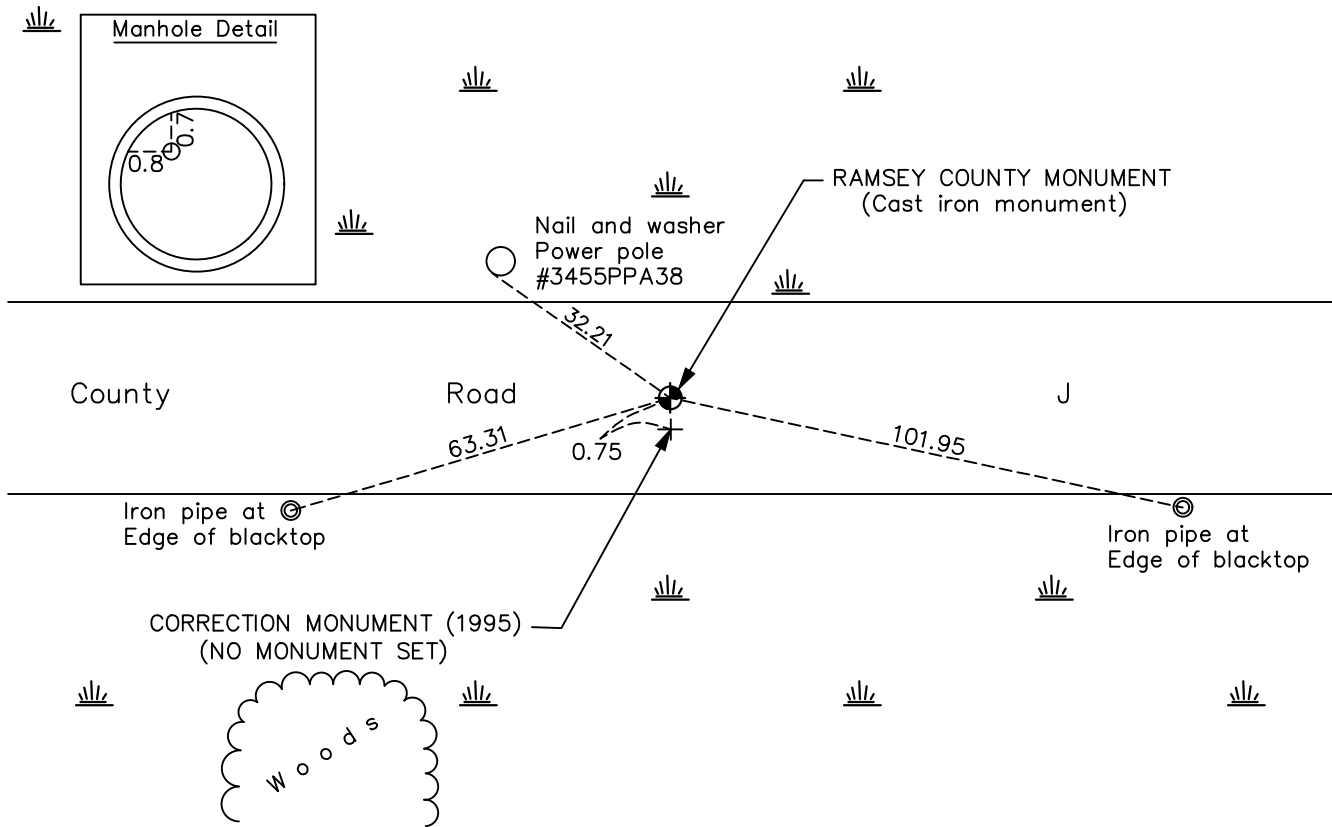
(Ramsey County Monument)

On the 19th day of March, 1964, the described corner was evidenced by a 1" iron pipe

and to perpetuate the location of said corner, at the exact location thereof, a permanent marker was placed consisting of a Ramsey County cast iron monument

AND on the 4th day of June, 2021, said permanent marker was found set in concrete down 1.4'± under a manhole cover and the ties were updated

Updated reference ties are as shown below.



Revision Date
 8/5/21

RAMSEY COUNTY MONUMENT
 N.A.D. 1983 Coordinates
 (1996 Adjustment)

County Project Coordinates	
Northing	132430.7533
Easting	541210.9910
Date	3/23/98

I hereby certify that this United States public land survey monument record is correct and complete to the best of my knowledge and belief.
David M. Zieglmeier Date 8/31/21
 David M. Zieglmeier, Anoka County Surveyor
 Minnesota License Number 46179

HISTORY OF GOVERNMENT CORNER

Page No. 155

County of Anoka

State of Minnesota

Northwest Corner of Sec. 6 Township 30 Range 22

(Ramsey County Monument)

CORNER HISTORY:

March 19, 1964 – Found 1” Iron Pipe down 0.05’± that fit remaining Ramsey County tie to a fence corner. Established ties to monument.

June 16, 1965 – Found 1” Iron Pipe flush with the surface and updated ties.

August 27, 1969 – Found Iron Pipe and updated ties.

June 27, 1973 – Found 1” Iron Pipe flush with the surface and set in concrete. Set P.K. nails 2.00’ north and east of iron pipe and updated ties.

August 20, 1976 – Found Iron Pipe and updated ties.

July 8, 1986– Found Ramsey County Cast Iron Monument and updated ties.

October 24, 1991 – Found Cast Iron Monument and updated ties.

June 25, 1996 – Found Cast Iron Monument and updated ties.

March 23, 1998 – Found Cast Iron Monument and established NAD 1983 (1996 Adjustment) Anoka County Project Coordinates by Static GPS methods. Updated ties.

August 9, 2010 – Found Ramsey County Cast Iron Monument set in concrete down 1.4’± under a manhole cover and updated ties.

January 23, 2017 – Found Ramsey County cast iron monument set in concrete down 1.4’± under a manhole cover. Verified location of corner by VRS GPS methods. Updated ties.

June 4, 2021 – Found Ramsey County cast iron monument set in concrete down 1.4’± under a manhole cover. Verified location of corner by VRS GPS methods. Updated ties.