

# CERTIFICATE OF LOCATION OF GOVERNMENT CORNER

County of Anoka

State of Minnesota

## North 1/4 Corner of Sec. 6 Township 30 Range 22

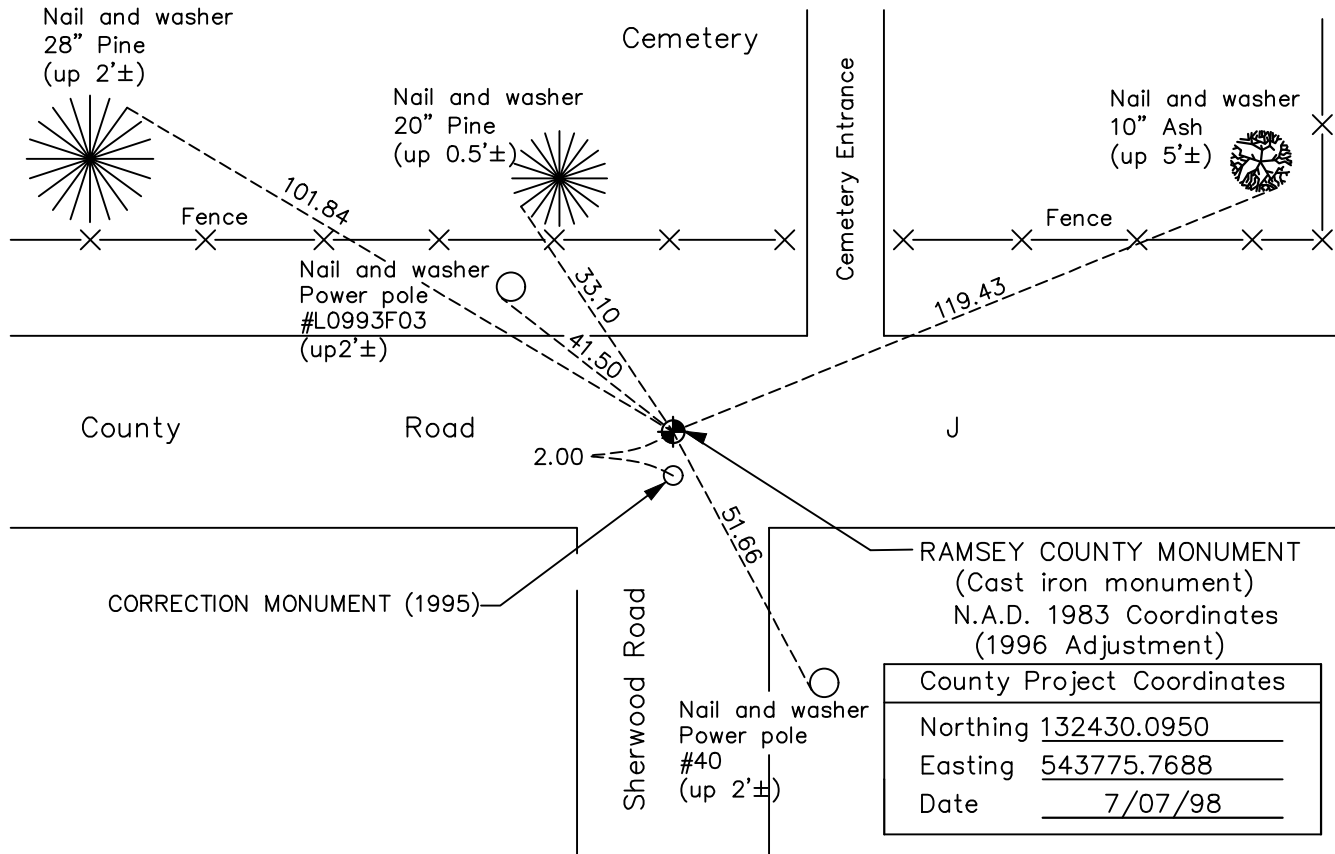
(Ramsey County monument)

On the 19th day of March, 1965, the described corner was evidenced by a 1/2" iron pipe

and to perpetuate the location of said corner, at the exact location thereof, a permanent marker was placed consisting of a cast iron monument top set in concrete

AND on the 4th day of June, 2021, said permanent marker was found down 0.3'± in steel tube and the ties were updated

Updated reference ties are as shown below.



RAMSEY COUNTY MONUMENT (Cast iron monument) N.A.D. 1983 Coordinates (1996 Adjustment)	
County Project Coordinates	
Northing	<u>132430.0950</u>
Easting	<u>543775.7688</u>
Date	<u>7/07/98</u>

CORRECTION MONUMENT (1995)  
N.A.D. 1983 Coordinates  
(1996 Adjustment)

County Project Coordinates	
Northing	<u>132428.1091</u>
Easting	<u>543775.7501</u>
Date	<u>7/07/98</u>

I hereby certify that this United States public land survey monument record is correct and complete to the best of my knowledge and belief.  
*David M Zieglsmeier* Date 8/31/21  
David M. Zieglsmeier, Anoka County Surveyor  
Minnesota License Number 46179

ANOKA COUNTY SURVEYOR

Revision Date  
8/5/21

# HISTORY OF GOVERNMENT CORNER

Page No. 156

County of Anoka

State of Minnesota

## North 1/4 Corner of Sec. 6 Township 30 Range 22 (Ramsey County monument)

### **CORNER HISTORY:**

March 19, 1964 – Found 1/2" Iron Pipe flush with the surface that fits 2 remaining Ramsey County ties. Established ties to monument.

June 16, 1965 – Found Iron Pipe and updated ties.

August 27, 1969 – Found Iron Pipe and updated ties.

June 27, 1973 – Found Iron Pipe and updated ties.

August 20, 1976 – Found Iron Pipe and updated ties.

June 25, 1996 – Found Cast Iron top set in concrete (date set unknown) and updated ties.

July 7, 1998 – Found Cast Iron top set in concrete and established NAD 1983 (1996 Adjustment) Anoka County Project Coordinates by Static GPS methods. Updated ties.

July 30, 2010 – Found Cast Iron Monument top set in concrete flush with the surface and updated ties.

January 20, 2017 – Found Cast Iron Monument down 0.1'± and verified location of corner by VRS GPS methods. Updated ties.

June 4, 2021 – Found Cast Iron Monument down 0.3'± in steel tube and verified location of corner by VRS GPS methods. Updated ties.