

CERTIFICATE OF LOCATION OF GOVERNMENT CORNER

County of Anoka

State of Minnesota

North 1/4 Corner of Sec. 5 Township 30 Range 22

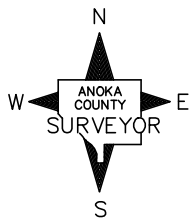
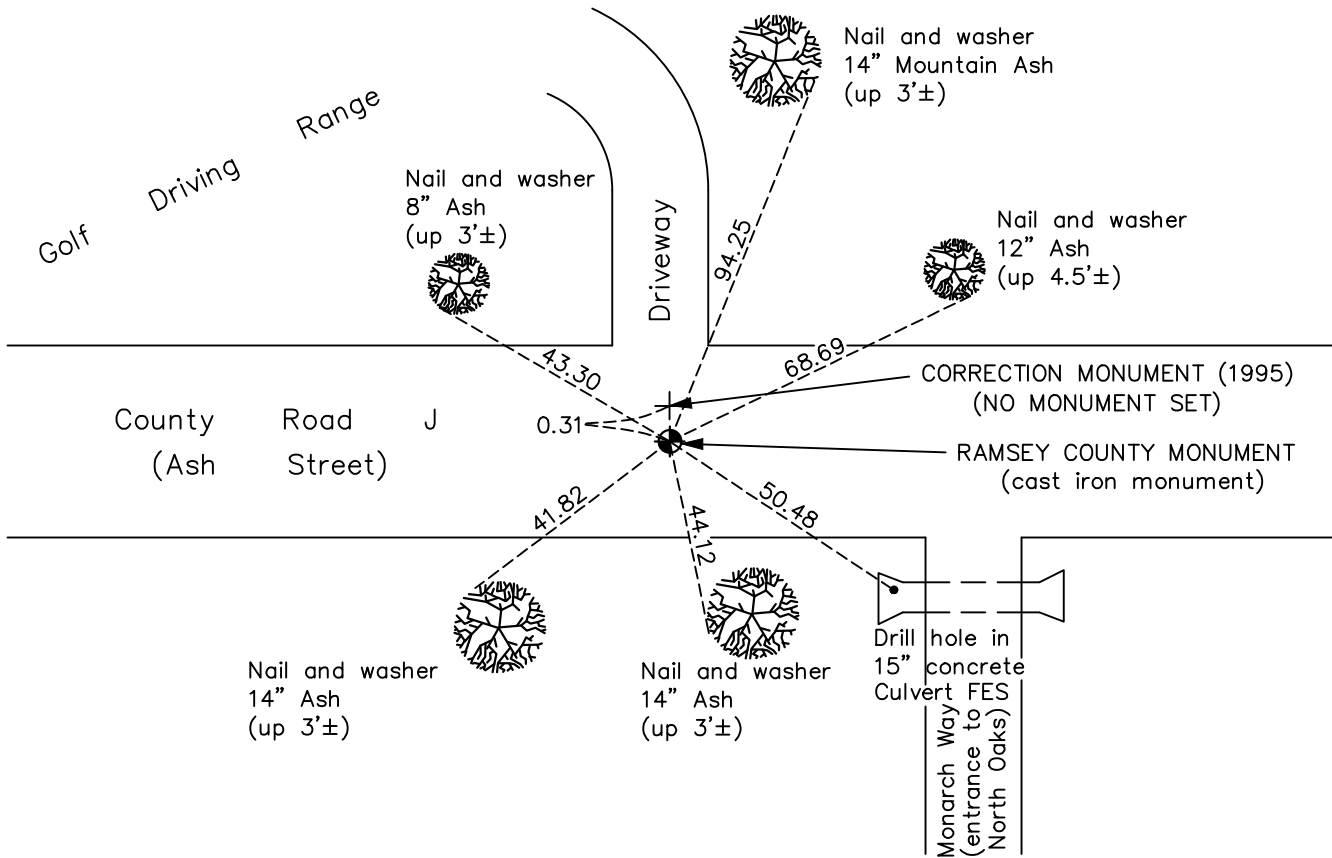
(Ramsey County monument)

On the 22nd day of January, 1965, the described corner was evidenced by a 6" square monument

and to perpetuate the location of said corner, at the exact location thereof, a permanent marker was placed consisting of a cast iron monument down 0.1'±

AND on the 4th day of June, 2021, said permanent marker was found down 2'± in steel tube and the ties were updated

Updated reference ties are as shown below.



Revision Date
8/5/21

RAMSEY COUNTY MONUMENT
 N.A.D. 1983 Coordinates
 (1996 Adjustment)

County Project Coordinates	
Northing	132429.2111
Easting	549055.3488
Date	3/23/98

I hereby certify that this United States public land survey monument record is correct and complete to the best of my knowledge and belief.

David M Zieglmeier Date 8/31/21

David M. Zieglmeier, Anoka County Surveyor
 Minnesota License Number 46179

HISTORY OF GOVERNMENT CORNER

Page No. 158

County of Anoka

State of Minnesota

North 1/4 Corner of Sec. 5 Township 30 Range 22 (Ramsey County monument)

CORNER HISTORY:

January 22, 1965 – Found 6” Square Ramsey County Granite Monument down 5”± with lag screw over drill hole and down 1/2”. Set P.K. Nails 2.00’ north and east of monument. Established ties to monument.

June 16, 1965 – Found Granite Monument and updated ties.

August 29, 1969 – Found Granite Monument and updated ties.

June 27, 1973 – Found Granite Monument and updated ties.

June 8, 1977– Found Granite Monument and updated ties.

July 9, 1986 – Found Granite Monument and updated ties.

October 24, 1991 – Found Granite Monument and updated ties.

June 25, 1996 – Found Granite Monument and updated ties.

March 23, 1998 – Found Granite Monument and established NAD 1983 (1996 Adjustment) Anoka County Project Coordinates by Static GPS methods. Updated ties.

August 12, 2010 – Found Cast Iron Monument (date set unknown)and updated ties.

January 9, 2017 – Found Cast Iron Monument and verified location of corner by VRS GPS methods. Updated ties.

June 4, 2021 – Found Cast Iron Monument down 2’± in steel tube. Verified location of corner by VRS GPS methods. Updated ties.