

CERTIFICATE OF LOCATION OF GOVERNMENT CORNER

County of Anoka

State of Minnesota

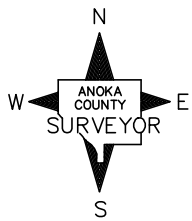
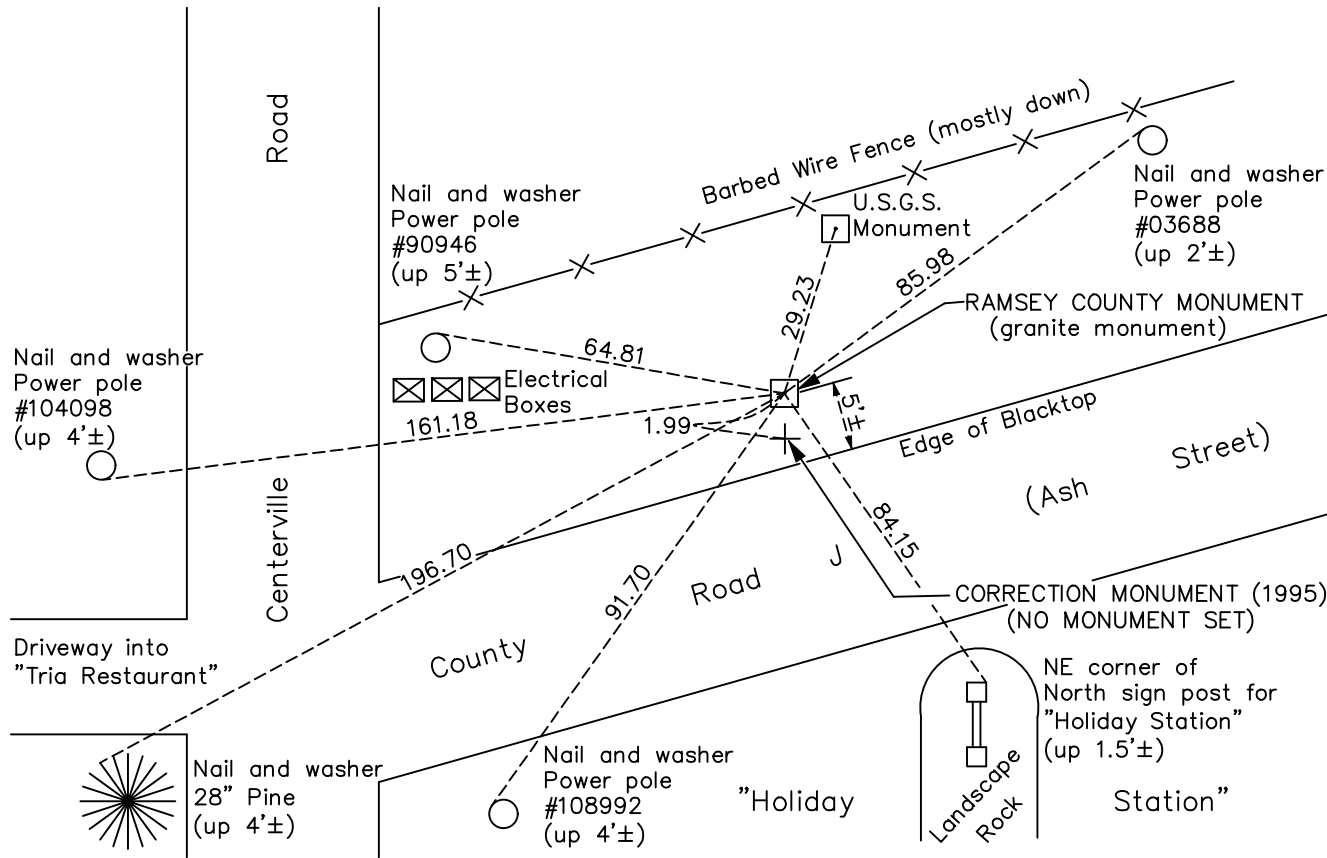
North 1/4 Corner of Sec. 4 Township 30 Range 22 (Ramsey County monument)

On the 22nd day of April, 1965, the described corner was evidenced by a granite monument

and to perpetuate the location of said corner, at the exact location thereof, a permanent marker was placed consisting of a granite monument

AND on the 17th day of May, 2021, said permanent marker was found down 1.0'± inside handhole cover the ties were updated

Updated reference ties are as shown below.



N.A.D. 1983 Coordinates
(1996 Adjustment)

County Project Coordinates	
Northing	132445.1260
Easting	554272.8444
Date	3/23/98

Revision Date
8/5/21

I hereby certify that this United States public land survey monument record is correct and complete to the best of my knowledge and belief.
David M Zieglsmeier Date 8/31/21
 David M. Zieglsmeier, Anoka County Surveyor
 Minnesota License Number 46179

HISTORY OF GOVERNMENT CORNER

Page No. 160

County of Anoka

State of Minnesota

North 1/4 Corner of Sec. 4 Township 30 Range 22 (Ramsey County monument)

CORNER HISTORY:

April 22, 1965 – Found Ramsey County Granite Monument down 0.1'±. Set P.K. Nails 2.00' north and east of monument. Established ties to monument.

July 3, 1973 – Found Granite Monument and updated ties.

June 8, 1977 – Found Granite Monument and updated ties.

April 23, 1980 – Found Cast Iron Monument in place of Granite Monument and updated ties. All future ties indicate that a granite monument was found. There is no indication that a cast iron monument was found.

November 6, 1990 – Found Granite Monument and updated ties.

November 30, 1992 – Found Granite Monument and updated ties.

June 27, 1996 – Found Granite Monument and updated ties.

March 23, 1998 – Found Granite Monument and established NAD 1983 (1996 Adjustment) Anoka County Project Coordinates by Static GPS methods. Updated ties.

July 15, 2010– Found Granite Monument down 0.5'± and updated ties.

December 22, 2016 – Found Granite Monument down 1.0'± and verified location of corner by VRS GPS methods. Updated ties.

May 17, 2021 – Found Granite Monument down 1.0'± inside handhole cover and verified location of corner by VRS GPS methods. Updated ties.