

CERTIFICATE OF LOCATION OF GOVERNMENT CORNER

County of Anoka

State of Minnesota

Northeast Corner of Sec. 3 Township 30 Range 22

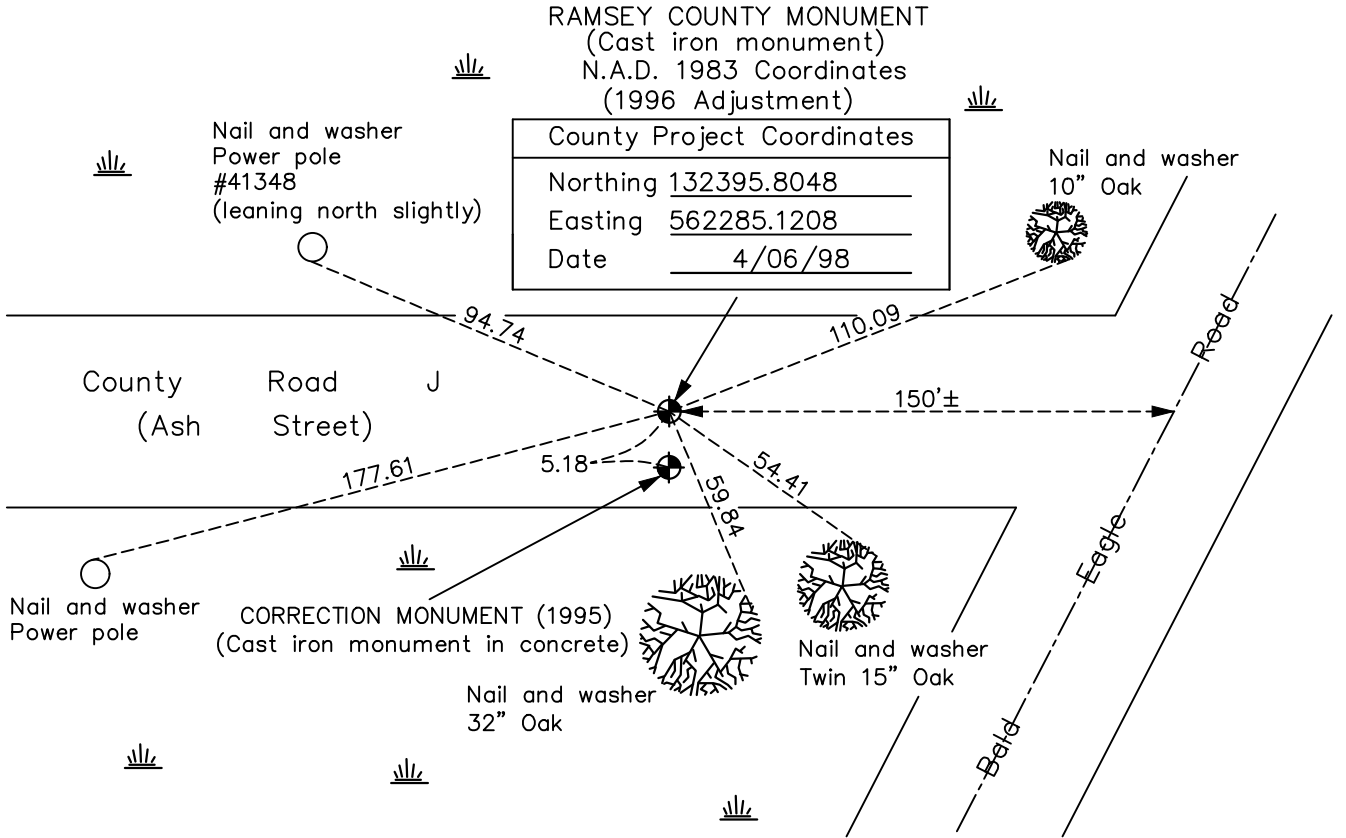
(Ramsey County monument)

On the ____ day of _____, _____, the described corner was evidenced by a granite monument

and to perpetuate the location of said corner, at the exact location thereof, a permanent marker was placed consisting of the same granite monument

AND on the 17th day of May, 2021, said permanent marker was found to be a cast iron monument flush and the ties were updated

Updated reference ties are as shown below.



RAMSEY COUNTY MONUMENT (Cast iron monument) N.A.D. 1983 Coordinates (1996 Adjustment)	
County Project Coordinates	
Northing	<u>132395.8048</u>
Easting	<u>562285.1208</u>
Date	<u>4/06/98</u>

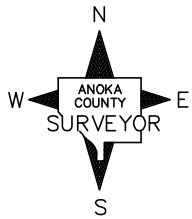
Nail and washer
Power pole
#41348
(leaning north slightly)

Nail and washer
10" Oak

Nail and washer
32" Oak

Nail and washer
Twin 15" Oak

CORRECTION MONUMENT (1995)
(Cast iron monument in concrete)



Revision Date
8/5/21

CORRECTION MONUMENT (1995)
N.A.D. 1983 Coordinates
(1996 Adjustment)

County Project Coordinates	
Northing	<u>132390.5512</u>
Easting	<u>562285.1172</u>
Date	<u>4/06/98</u>

I hereby certify that this United States public land survey monument record is correct and complete to the best of my knowledge and belief.

David M Zieglmeier Date 8/31/21

David M. Zieglmeier, Anoka County Surveyor
Minnesota License Number 46179

HISTORY OF GOVERNMENT CORNER

Page No. 164

County of Anoka

State of Minnesota

Northeast Corner of Sec. 3 Township 30 Range 22 (Ramsey County monument)

CORNER HISTORY:

July 15, 1946 - Jackson found a granite monument down 1'± with an iron pipe on top. Updated ties.

July 16, 1973 - Found granite monument down 1'± with an iron pipe on top. Updated ties.

June 24, 1996 - Found granite monument and updated ties.

April 6, 1998 - Found granite monument and updated ties. Found 1995 correction cast iron monument south of granite. Established NAD 1983 (1996 adj.) Anoka County project coordinates by static GPS methods on both monuments.

July 19, 2010 - Found cast iron monument down 0.1'± and updated ties. Found 1995 correction cast iron monument to the south.

May 17, 2021 - Found cast iron monument flush. Verified position by VRS GPS methods. Updated ties.