

# CERTIFICATE OF LOCATION OF GOVERNMENT CORNER

County of Anoka

State of Minnesota

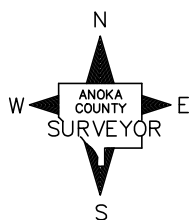
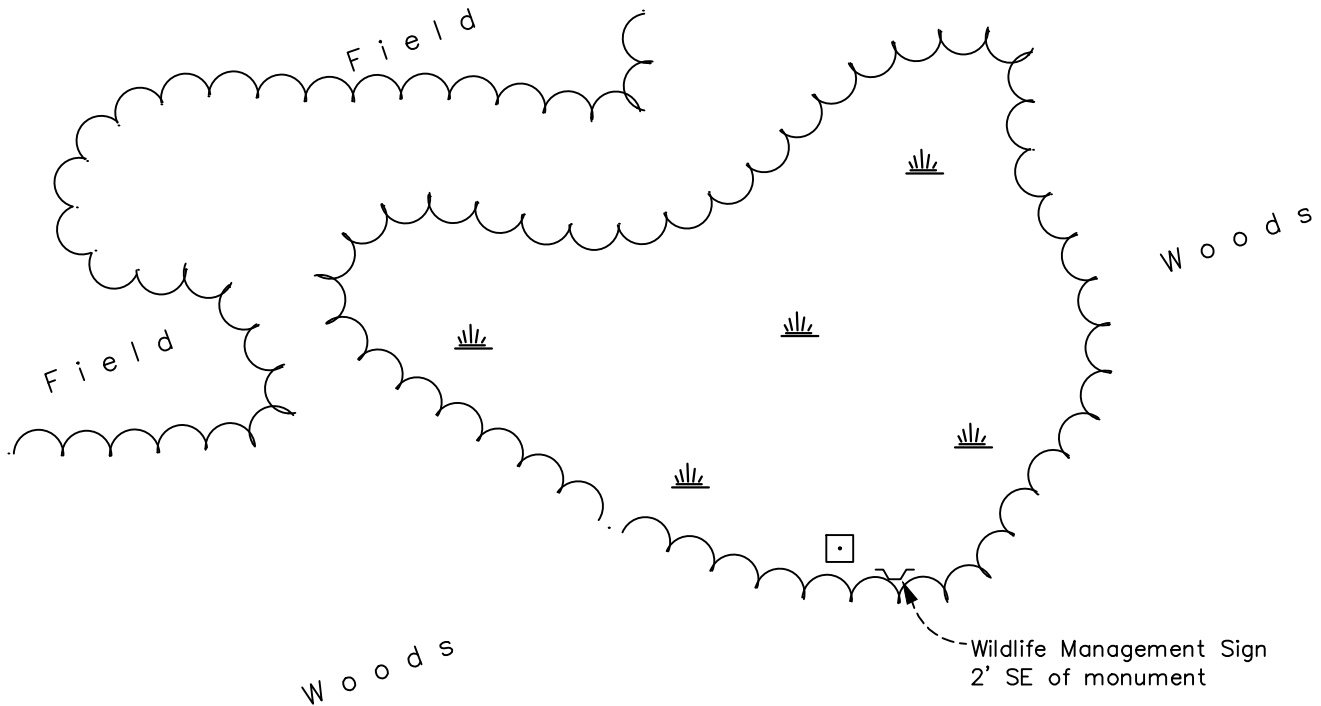
## North 1/4 Corner of Sec. 1 Township 33 Range 22

On the 13th day of August, 1975, the described corner was evidenced by a concrete monument

and to perpetuate the location of said corner, at the exact location thereof, a permanent marker was placed consisting of the same concrete monument

AND on the 24th day of March, 2022, said permanent marker was found 4"x4" concrete monument up 0.5'±. Verified position by VRS GPS methods. No corner ties available.

Updated reference ties are as shown below.



Revision Date  
4/07/2022

N.A.D. 1983 Coordinates  
 (1996 Adjustment)

County Project Coordinates	
Northing	<u>226835.8809</u>
Easting	<u>561156.5375</u>
Date	<u>2/24/05</u>

I hereby certify that this United States public land survey monument record is correct and complete to the best of my knowledge and belief.  
David Zieglmeier Date 12/11/23  
 David Zieglmeier Anoka County Surveyor  
 Minnesota License Number 46179

# HISTORY OF GOVERNMENT CORNER

Page No. 2

County of Anoka

State of Minnesota

North 1/4 Corner of Sec. 1 Township 33 Range 22

## **CORNER HISTORY:**

1933 - Notes from 1933 (page 67) show a concrete monument with 2 ties.

August 13, 1975 - Found concrete monument up 1'± and updated ties.

July 18, 1978 - Found concrete monument and updated ties.

August 17, 1981 - Found concrete monument and updated ties.

August 28, 1984 - Found concrete monument and updated ties.

October 18, 1990 - Found concrete monument and updated ties.

July 14, 1993 - Found concrete monument and updated ties.

February 24, 2005 - Established NAD 1983 (1996 adj.) Anoka County project coordinates by static GPS methods.

May 13, 2019 - Found concrete monument 0.5'± under water. Verified position by VRS GPS methods. No corner ties available.

March 24, 2022 - Found concrete monument up 0.5'± and verified position by VRS GPS methods. No corner ties available.