

CERTIFICATE OF LOCATION OF GOVERNMENT CORNER

County of Anoka

State of Minnesota

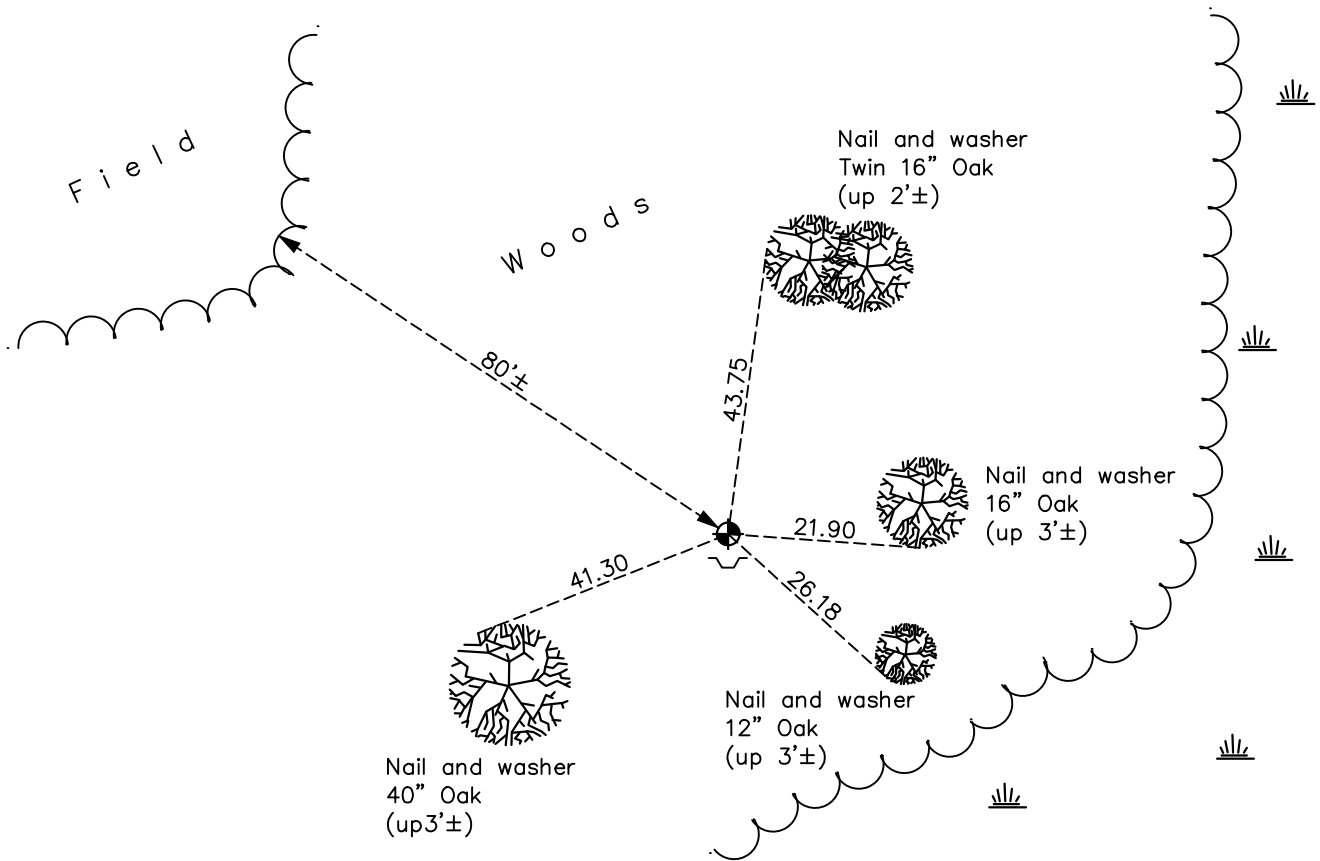
Northeast Corner of Sec. 2 Township 33 Range 22

On the 25th day of September, 1975, the described corner was evidenced by area resurvey

and to perpetuate the location of said corner, at the exact location thereof, a permanent marker was placed consisting of a cast iron monument with a sign and post on the south side

AND on the 5th day of January, 2022, said permanent marker was found flush and the ties were updated

Updated reference ties are as shown below.



Revision Date
03/16/22

N.A.D. 1983 Coordinates
(1996 Adjustment)

County Project Coordinates	
Northing	<u>226916.2637</u>
Easting	<u>558526.7973</u>
Date	<u>4/13/04</u>

I hereby certify that this United States public land survey monument record is correct and complete to the best of my knowledge and belief.

David Zieglsmeier Date 12/11/23

David M. Zieglsmeier, Anoka County Surveyor
Minnesota License Number 46179

HISTORY OF GOVERNMENT CORNER

Page No. 3

County of Anoka

State of Minnesota

Northeast Corner of Sec. 2 Township 33 Range 22

CORNER HISTORY:

September 25, 1975 - Set cast iron monument flush using area resurvey. Established ties to monument.

July 18, 1978 - Found cast iron monument and updated ties.

August 17, 1981 - Found cast iron monument and updated ties.

August 28, 1984 - Found cast iron monument and updated ties.

December 24, 1990 - Found cast iron monument and updated ties.

July 12, 1993 - Found cast iron monument and updated ties.

April 13, 2004 - Established NAD 1983 (1996 adj.) Anoka County project coordinates by static GPS methods.

April 29, 2019 - Found cast iron monument flush. Verified position by VRS GPS methods. Updated the ties.

January 5, 2022 - Found cast iron monument flush. Verified position by VRS GPS methods. Updated the ties.