

CERTIFICATE OF LOCATION OF GOVERNMENT CORNER

County of Anoka

State of Minnesota

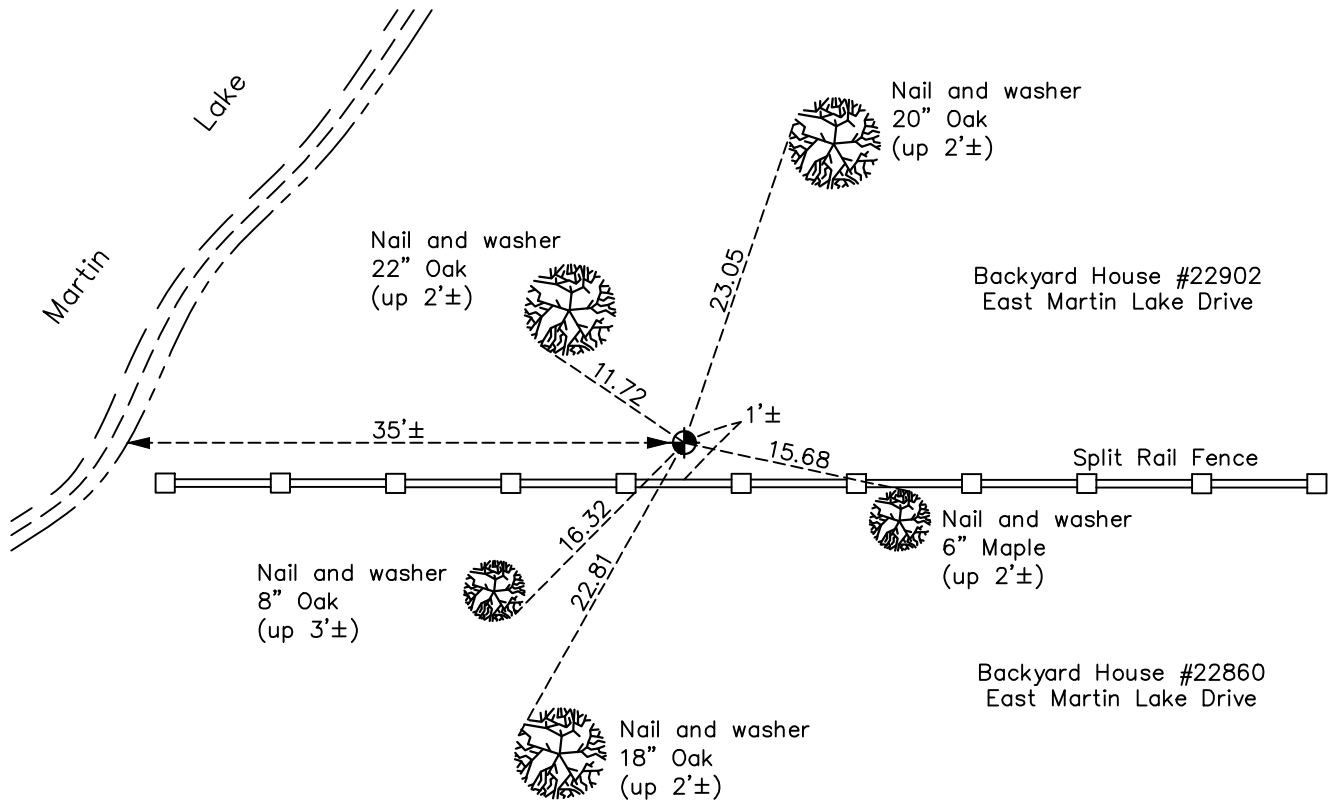
Witness Corner of Sec. 3 Township 33 Range 22
(on north line of NW 1/4)

On the 5th day of May, 1976, the described corner was evidenced by area resurvey

and to perpetuate the location of said corner, at the exact location thereof, a permanent marker was placed consisting of a cast iron monument

AND on the 23rd day of March, 2022, said permanent marker was found down 0.4'± and the ties were updated.

Updated reference ties are as shown below.



Revision Date
4/07/2022

N.A.D. 1983 Coordinates
 (1996 Adjustment)

County Project Coordinates	
Northing	<u>227221.2942</u>
Easting	<u>548382.6690</u>
Date	<u>3/17/05</u>

I hereby certify that this United States public land survey monument record is correct and complete to the best of my knowledge and belief.
David Zieglmeier Date 12/11/23
 David Zieglmeier Anoka County Surveyor
 Minnesota License Number 46179

HISTORY OF GOVERNMENT CORNER

Page No. 6

County of Anoka

State of Minnesota

Witness Corner of Sec. 3 Township 33 Range 22
(on north line of NW 1/4)

CORNER HISTORY:

May 5, 1976 - Set cast iron monument flush using area resurvey and established ties to monument.

July 18, 1978 - Found cast iron monument and updated ties.

August 6, 1981 - Found cast iron monument and updated ties.

August 23, 1984 - Found cast iron monument and updated ties.

December 24, 1990 - Found cast iron monument and updated ties.

July 9, 1993 - Found cast iron monument and updated ties.

November 19, 2013 - Found cast iron monument broken. Updated ties to center fin.

August 18, 2014 - Found broken cast iron monument and verified position of center fin by static GPS methods.

August 25, 2014 - Set cast iron monument using static GPS methods and updated ties.

January 28, 2019 - Found cast iron monument down 0.4'± and updated ties.

March 23, 2022 - Found cast iron monument down 0.4'± and verified position by GPS VRS method. Updated ties.