

# CERTIFICATE OF LOCATION OF GOVERNMENT CORNER

County of Anoka

State of Minnesota

## Witness Corner of Sec. 4 Township 33 Range 22

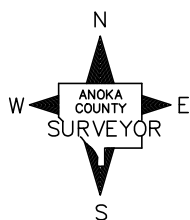
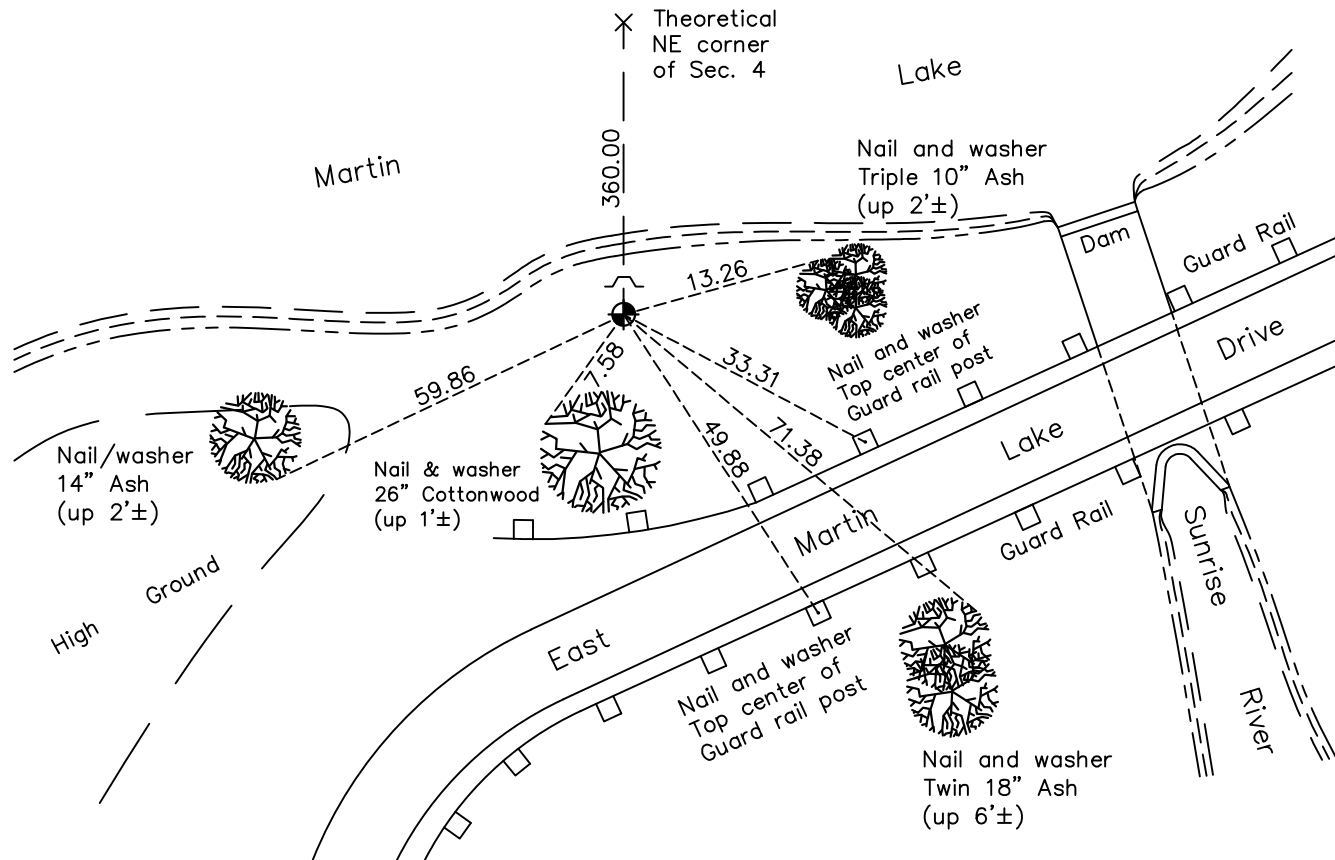
(on east line of NE 1/4)

On the 26th day of December, 1975, the described corner was evidenced by area resurvey

and to perpetuate the location of said corner, at the exact location thereof, a permanent marker was placed consisting of a cast iron monument with sign and post on the north side

AND on the 23rd day of March, 2022, said permanent marker was found down 1'± and the ties were updated

Updated reference ties are as shown below.



Revision Date  
4/07/2022

N.A.D. 1983 Coordinates  
 (1996 Adjustment)

County Project Coordinates	
Northing	<u>226875.1323</u>
Easting	<u>547990.9754</u>
Date	<u>4/01/04</u>

I hereby certify that this United States public land survey monument record is correct and complete to the best of my knowledge and belief.  
*David Zieglmeier* Date 12/11/23  
 David Zieglmeier Anoka County Surveyor  
 Minnesota License Number 46179

# HISTORY OF GOVERNMENT CORNER

Page No. 7

County of Anoka

State of Minnesota

Witness Corner of Sec. 4 Township 33 Range 22  
(on east line of NE 1/4)

## **CORNER HISTORY:**

December 26, 1975 - Set 1/2" iron pipe using area resurvey. Established ties to iron pipe.

May 6, 1976 - Found 1/2" iron pipe and replaced with a cast iron monument down 0.5'±.

July 18, 1978 - Found cast iron monument and updated ties.

August 6, 1981 - Found cast iron monument and updated ties.

August 23, 1984 - Found cast iron monument and updated ties.

August 11, 1987 - Found cast iron monument and updated ties.

June 30, 1993 - Found cast iron monument and updated ties.

April 1, 2004 - Found cast iron monument and updated ties. Established NAD 1983 (1996 adj.) Anoka County project coordinates by static GPS methods.

November 19, 2013 - Found cast iron monument down 1'± and updated ties.

March 18, 2019 - Found cast iron monument down 1'±. Verified position by VRS GPS methods. Updated ties.

March 23, 2022 - Found cast iron monument down 1'±. Verified position by VRS GPS methods. Updated ties.