

# CERTIFICATE OF LOCATION OF GOVERNMENT CORNER

County of Anoka

State of Minnesota

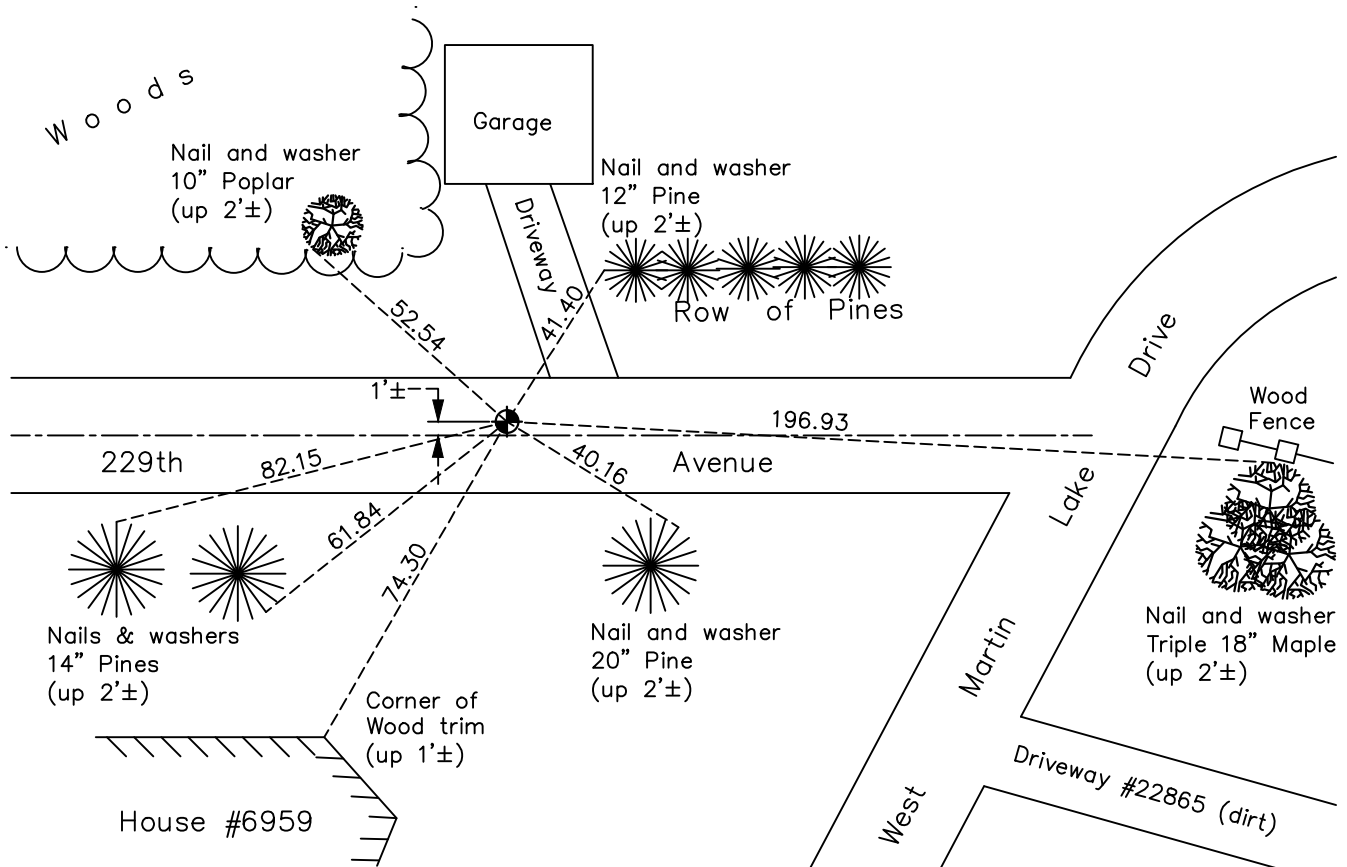
## North $\frac{1}{4}$ Corner of Sec. 4 Township 33 Range 22

On the 10th day of December, 1944, the described corner was evidenced by a granite monument

and to perpetuate the location of said corner, at the exact location thereof, a permanent marker was placed consisting of a cast iron monument

AND on the 17th day of December, 2021, said permanent marker was found flush and the ties were updated

Updated reference ties are as shown below.



Revision Date  
03/16/22

N.A.D. 1983 Coordinates  
(1996 Adjustment)

County Project Coordinates	
Northing	<u>227410.4226</u>
Easting	<u>545376.1615</u>
Date	<u>6/05/03</u>

I hereby certify that this United States public land survey monument record is correct and complete to the best of my knowledge and belief.

*David Zieglsmeier* Date 12/11/23

David M. Zieglsmeier, Anoka County Surveyor  
Minnesota License Number 46179

# HISTORY OF GOVERNMENT CORNER

Page No. 8

County of Anoka

State of Minnesota

North 1/4 Corner of Sec. 4 Township 33 Range 22

## **CORNER HISTORY:**

December 10, 1944 - Found granite monument up 0.4'± and updated ties.

February 6, 1963 - Found 6" x 6" granite monument up 0.4'± and updated ties.

June 22, 1967 - Found granite monument and updated ties.

July 7, 1971 - Found granite monument and updated ties.

July 21, 1975 - Found granite monument and updated ties.

July 18, 1978 - Found granite monument and updated ties.

August 4, 1981 - Found granite monument and updated ties.

August 23, 1984 - Found granite monument and updated ties.

April 11, 1989 - Found granite monument and updated ties prior to road construction. Removed monument.

November 1, 1990 - Found cast iron monument and updated ties. (unclear when CIM was set)

June 16, 1993 - Found cast iron monument and updated ties.

June 5, 2003 - Established NAD 1983 (1996 adj.) Anoka County project coordinates by static GPS methods.

May 7, 2014 - Found cast iron monument and raised flush. Updated ties.

January 28, 2019 - Found cast iron monument flush. Verified position by VRS GPS methods. Updated ties.

December 17, 2021 - Found cast iron monument flush. Verified position by VRS GPS methods. Updated ties.