

# CERTIFICATE OF LOCATION OF GOVERNMENT CORNER

County of Anoka

State of Minnesota

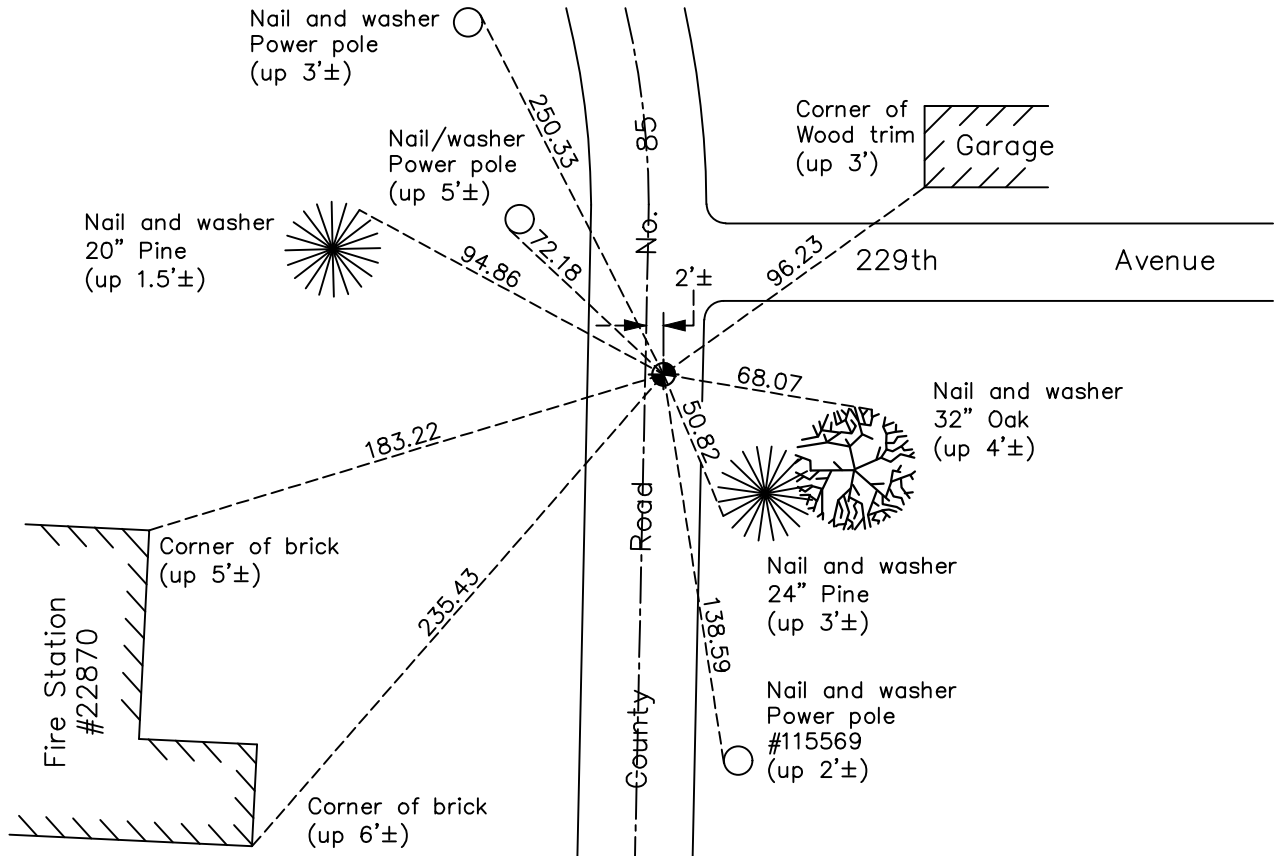
## Northwest Corner of Sec. 4 Township 33 Range 22

On the 27th day of February, 1961, the described corner was evidenced by a stone monument

and to perpetuate the location of said corner, at the exact location thereof, a permanent marker was placed consisting of a cast iron monument

AND on the 4th day of March, 2022, said permanent marker was found flush and the ties ties were updated

Updated reference ties are as shown below.



Revision Date  
03/16/22

N.A.D. 1983 Coordinates  
 (1996 Adjustment)

County Project Coordinates	
Northing	<u>227474.1642</u>
Easting	<u>542740.0433</u>
Date	<u>6/05/03</u>

I hereby certify that this United States public land survey monument record is correct and complete to the best of my knowledge and belief.

*David Zieglermeier* Date 12/11/23

David M. Zieglermeier, Anoka County Surveyor  
 Minnesota License Number 46179

# HISTORY OF GOVERNMENT CORNER

Page No. 9

County of Anoka

State of Minnesota

## Northwest Corner of Sec. 4 Township 33 Range 22

### **CORNER HISTORY:**

July 7, 1945 - Found concrete monument down 0.6' by Harvey A. Cartwright. Established ties to monument.

February 27, 1961 - Found stone monument down 3' using old Harvey A. Cartwright ties. Did not find concrete monument as per the ties. Assumed to be the same stone set by County Surveyor Pratt in 1871. Set cast iron monument on top of stone.

June 22, 1967 - Found cast iron monument down 0.3' in dirt road and updated ties.

July 8, 1971 - Found cast iron monument down 0.1' in dirt road and updated ties.

April 30, 1975 - Found cast iron monument broken and replaced with a new cast iron monument down 0.5'± using the corner ties. Updated ties.

July 21, 1975 - Found cast iron monument and updated ties.

July 18, 1978 - Found cast iron monument and updated ties.

August 4, 1981 - Found cast iron monument and updated ties.

May 8, 1984 - Found cast iron monument and updated ties prior to road construction. Removed monument.

June 16, 1993 - Found cast iron monument and updated ties.

June 5, 2003 - Established NAD 1983 (1996 adj.) Anoka County project coordinates by static GPS methods.

May 25, 2012 - Found cast iron monument, set construction ties, verified position by VRS GPS methods and updated corner ties prior to road construction. Removed monument.

September 10, 2012 - Set cast iron monument flush using static GPS methods and updated ties.

November 18, 2013 - Found cast iron monument and updated ties.

February 22, 2019 - Found cast iron monument. Verified position by VRS GPS methods. Updated ties.

March 4, 2022 - Found cast iron monument. Verified position by VRS GPS methods. Updated ties.