

CERTIFICATE OF LOCATION OF GOVERNMENT CORNER

County of Anoka

State of Minnesota

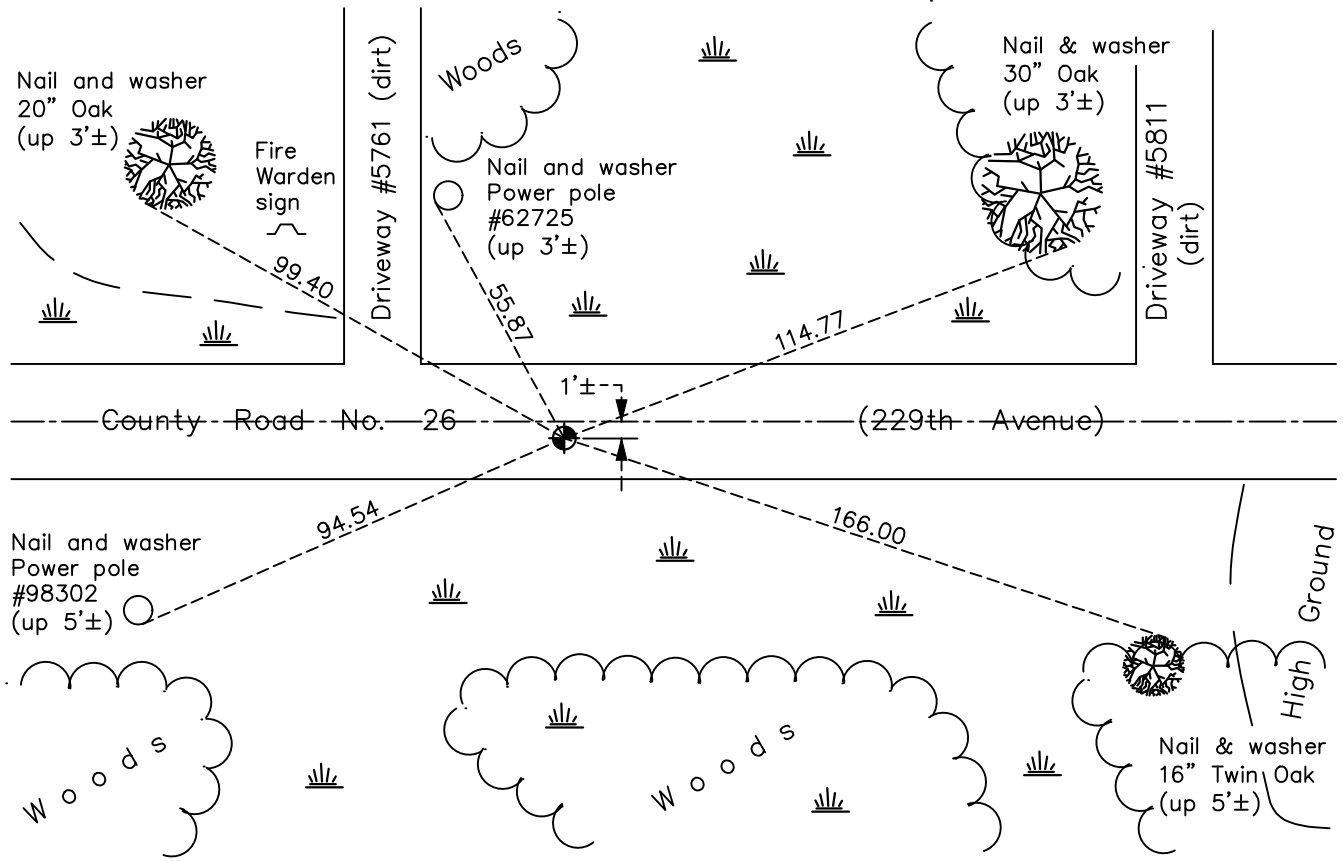
Northwest Corner of Sec. 5 Township 33 Range 22

On the 27th day of October, 1971, the described corner was evidenced by area resurvey

and to perpetuate the location of said corner, at the exact location thereof, a permanent marker was placed consisting of a cast iron monument

AND on the 17th day of February, 2022, said permanent marker was found flush and the ties were updated

Updated reference ties are as shown below.



Revision Date
 03/16/22

N.A.D. 1983 Coordinates
 (1996 Adjustment)

County Project Coordinates	
Northing	227482.5991
Easting	537485.4129
Date	6/09/03

I hereby certify that this United States public land survey monument record is correct and complete to the best of my knowledge and belief.

David Zieglermeier Date 12/11/23

David M. Zieglermeier, Anoka County Surveyor
 Minnesota License Number 46179

HISTORY OF GOVERNMENT CORNER

Page No. 11

County of Anoka

State of Minnesota

Northwest Corner of Sec. 5 Township 33 Range 22

CORNER HISTORY:

October 27, 1971 - Set 1" iron pipe by N.C. Hoium. Established ties to iron pipe.

November 19, 1971 - Found 1" iron pipe set by N.C. Hoium and updated ties.

April 1978 - According to I-88 file corner is a cast iron monument. (History on set date unclear)

June 16, 1993 - Found cast iron monument and updated ties.

June 4, 2003 - Found cast iron monument and updated ties.

June 9, 2003 - Established NAD 1983 (1996 adj.) Anoka County project coordinates by static GPS methods.

November 18, 2013 - Found cast iron monument and updated ties.

May 11, 2017 - Found cast iron monument, set construction ties, verified position by VRS GPS methods and updated corner ties prior to road construction. Removed monument.

July 7, 2017 - Set cast iron monument flush after road construction using static GPS methods. Verified position by VRS GPS methods. Updated ties.

February 27, 2019 - Found cast iron monument flush. Verified position by VRS GPS methods. Updated ties.

February 17, 2022 - Found cast iron monument flush. Verified position by VRS GPS methods. Updated ties.