

CERTIFICATE OF LOCATION OF GOVERNMENT CORNER

County of Anoka

State of Minnesota

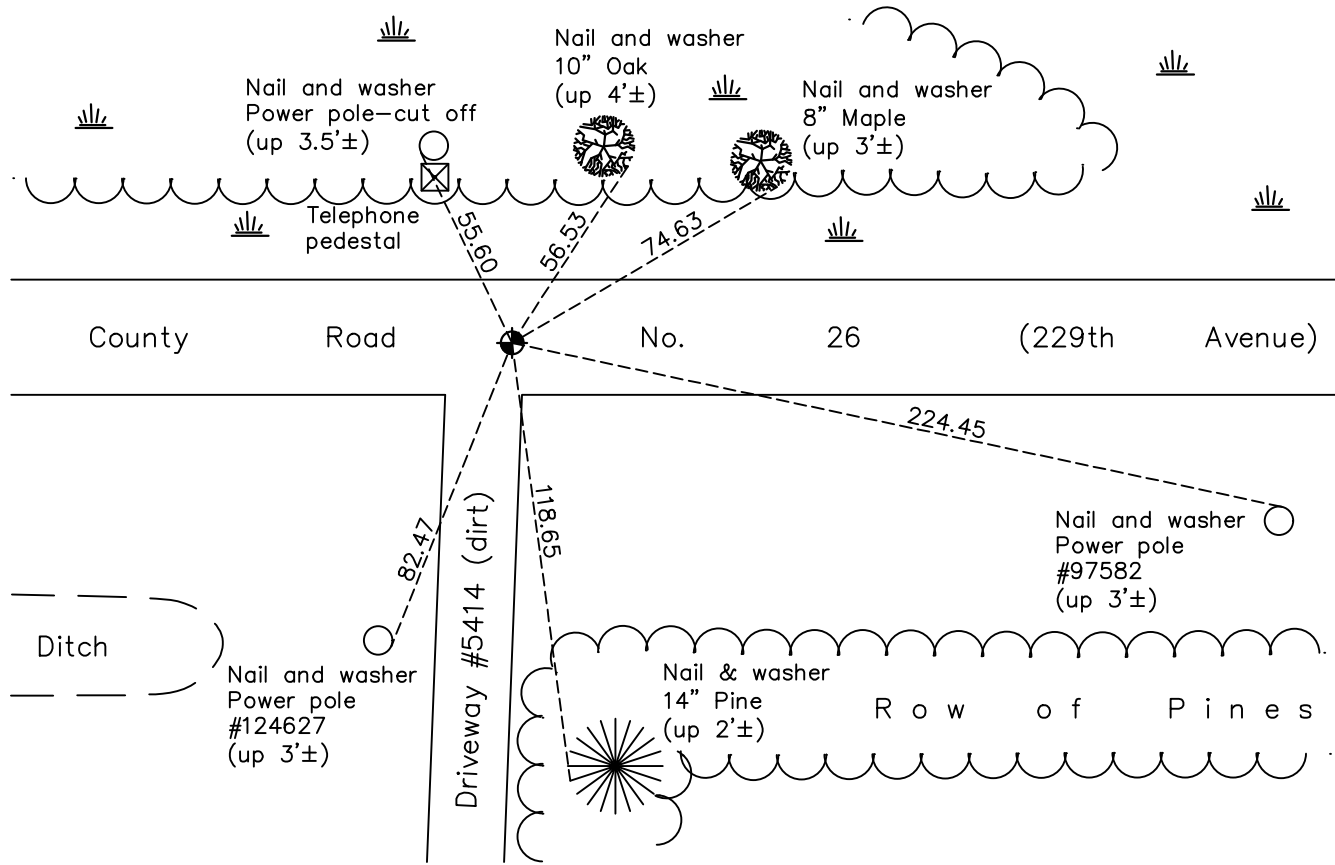
North $\frac{1}{4}$ Corner of Sec. 6 Township 33 Range 22

On the 6th day of February, 1963, the described corner was evidenced by a stone located using Highway Department distances

and to perpetuate the location of said corner, at the exact location thereof, a permanent marker was placed consisting of a cast iron monument

AND on the 28th day of February, 2022, said permanent marker was found flush and the ties were updated

Updated reference ties are as shown below.



Revision Date
03/16/22

N.A.D. 1983 Coordinates
(1996 Adjustment)

| County Project Coordinates | |
|----------------------------|--------------------|
| Northing | <u>227536.7016</u> |
| Easting | <u>534830.3522</u> |
| Date | <u>6/04/03</u> |

I hereby certify that this United States public land survey monument record is correct and complete to the best of my knowledge and belief.

David Zieglermeier Date 12/11/23

David M. Zieglermeier, Anoka County Surveyor
Minnesota License Number 46179

HISTORY OF GOVERNMENT CORNER

Page No. 12

County of Anoka

State of Minnesota

North 1/4 Corner of Sec. 6 Township 33 Range 22

CORNER HISTORY:

April 3, 1958 - Found stone down 0.1'± and established ties to stone by County Highway Department.

February 5, 1963 - Found all ties to be gone.

February 6, 1963 - Set railroad spike using County Highway Department distances and the line to found stone. Stone was removed during construction. Updated ties to railroad spike.

April 19, 1963 - Found railroad spike and replaced with a cast iron monument.

June 22, 1967 - Found cast iron monument and updated ties.

July 15, 1971 - Found cast iron monument and updated ties.

August 12, 1971 - Raised cast iron monument flush with road.

July 21, 1975 - Found cast iron monument and updated ties.

July 19, 1978 - Found cast iron monument and updated ties.

August 4, 1981 - Found cast iron monument and updated ties.

December 24, 1990 - Found cast iron monument and updated ties.

June 17, 1993 - Found cast iron monument and updated ties.

June 4, 2003 - Found cast iron monument and updated ties. Established NAD 1983 (1996 adj.) Anoka County project coordinates by static GPS methods.

November 18, 2013 - Found cast iron monument and updated ties.

May 11, 2017 - Found cast iron monument, set construction ties, verified position by VRS GPS and updated corner ties prior to road construction. Removed monument.

July 7, 2017 - Set cast iron monument flush after road construction using static GPS methods. Verified position by VRS GPS methods. Updated ties.

February 27, 2019 - Found cast iron monument flush. Verified position by VRS GPS methods. Updated ties.

February 28, 2022 - Found cast iron monument flush. Verified position by VRS GPS methods. Updated ties.