

CERTIFICATE OF LOCATION OF GOVERNMENT CORNER

County of Anoka

State of Minnesota

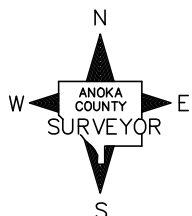
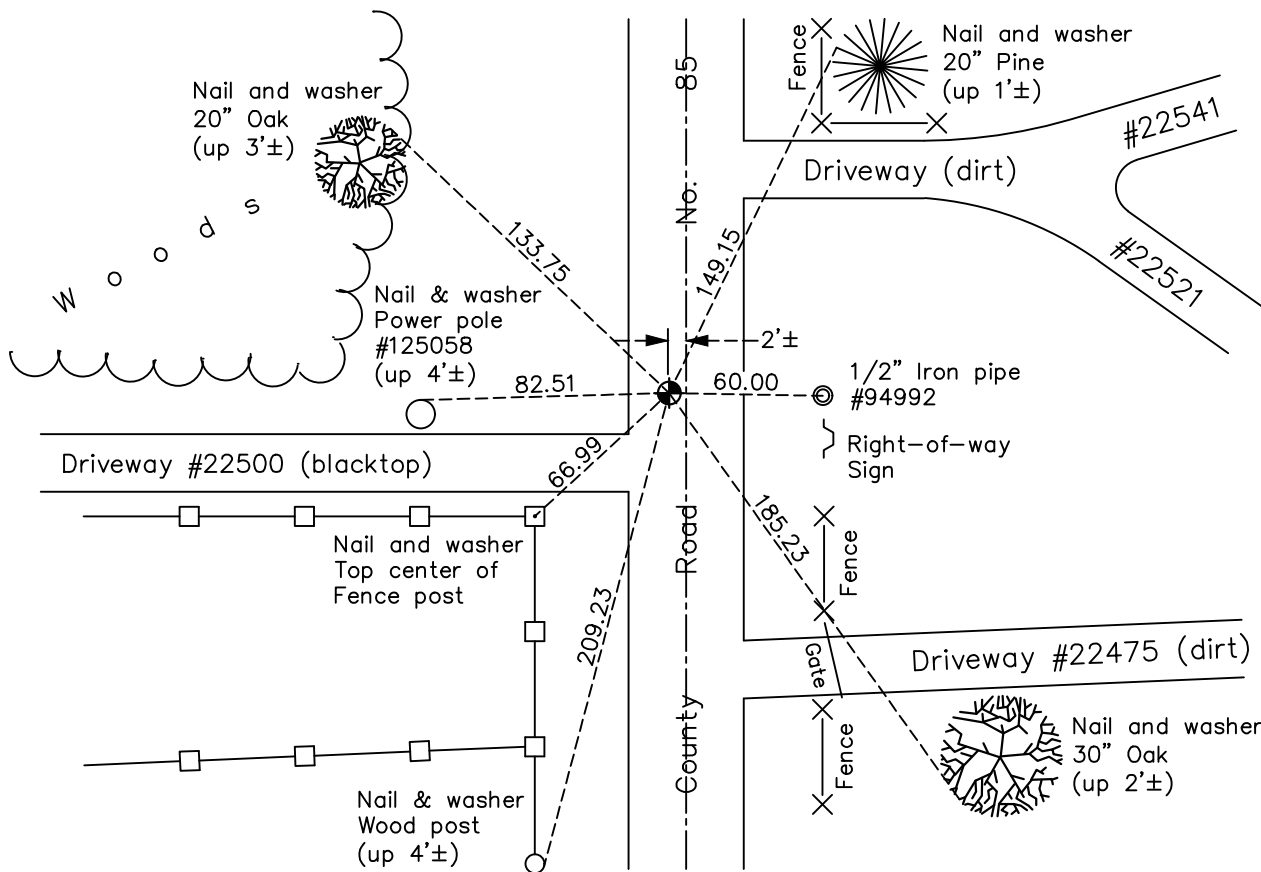
West 1/4 Corner of Sec. 4 Township 33 Range 22

On the 13th day of May, 1964, the described corner was evidenced by area resurvey

and to perpetuate the location of said corner, at the exact location thereof, a permanent marker was placed consisting of a cast iron monument

AND on the 22nd day of March, 2022, said permanent marker was found flush and the ties were updated

Updated reference ties are as shown below.



N.A.D. 1983 Coordinates
(1996 Adjustment)

County Project Coordinates	
Northing	<u>224849.9226</u>
Easting	<u>542578.1862</u>
Date	<u>4/06/04</u>

Revision Date
4/08/2022

I hereby certify that this United States public land survey monument record is correct and complete to the best of my knowledge and belief.
David Zieglmeier Date 12/11/23
 David Zieglmeier Anoka County Surveyor
 Minnesota License Number 46179

HISTORY OF GOVERNMENT CORNER

Page No. 16

County of Anoka

State of Minnesota

West 1/4 Corner of Sec. 4 Township 33 Range 22

CORNER HISTORY:

May 13, 1964 - Set cast iron monument down 0.3± using area resurvey. Established ties to monument.

June 27, 1967 - Found cast iron monument and updated ties.

July 15, 1971 - Found cast iron monument and updated ties.

July 21, 1975 - Found cast iron monument and updated ties.

April 13, 1977 - Found cast iron monument and updated ties prior to road construction.

May 17, 1977 - Set cast iron monument flush after road construction and updated ties..

July 19, 1978 - Found cast iron monument and updated ties.

March 29, 1979 - Found cast iron monument and updated ties.

August 4, 1981 - Found cast iron monument and updated ties.

August 23, 1984 - Found cast iron monument and updated ties.

December 26, 1990 - Found cast iron monument and updated ties.

June 16, 1993 - Found cast iron monument and updated ties.

April 6, 2004 - Established NAD 1983 (1996 adj.) Anoka County project coordinates by static GPS methods.

May 25, 2012 - Found cast iron monument, set construction ties, verified position by VRS GPS methods and updated corner ties prior to road construction. Removed monument.

November 11, 2012 - Set cast iron monument flush after road construction using static GPS methods. Updated ties.

November 19, 2013 - Found cast iron monument and updated ties.

February 22, 2019 - Found cast iron monument. Verified position by VRS GPS methods. Updated ties.

March 22, 2022 - Found cast iron monument. Verified position by VRS GPS methods. Updated ties.