

CERTIFICATE OF LOCATION OF GOVERNMENT CORNER

County of Anoka

State of Minnesota

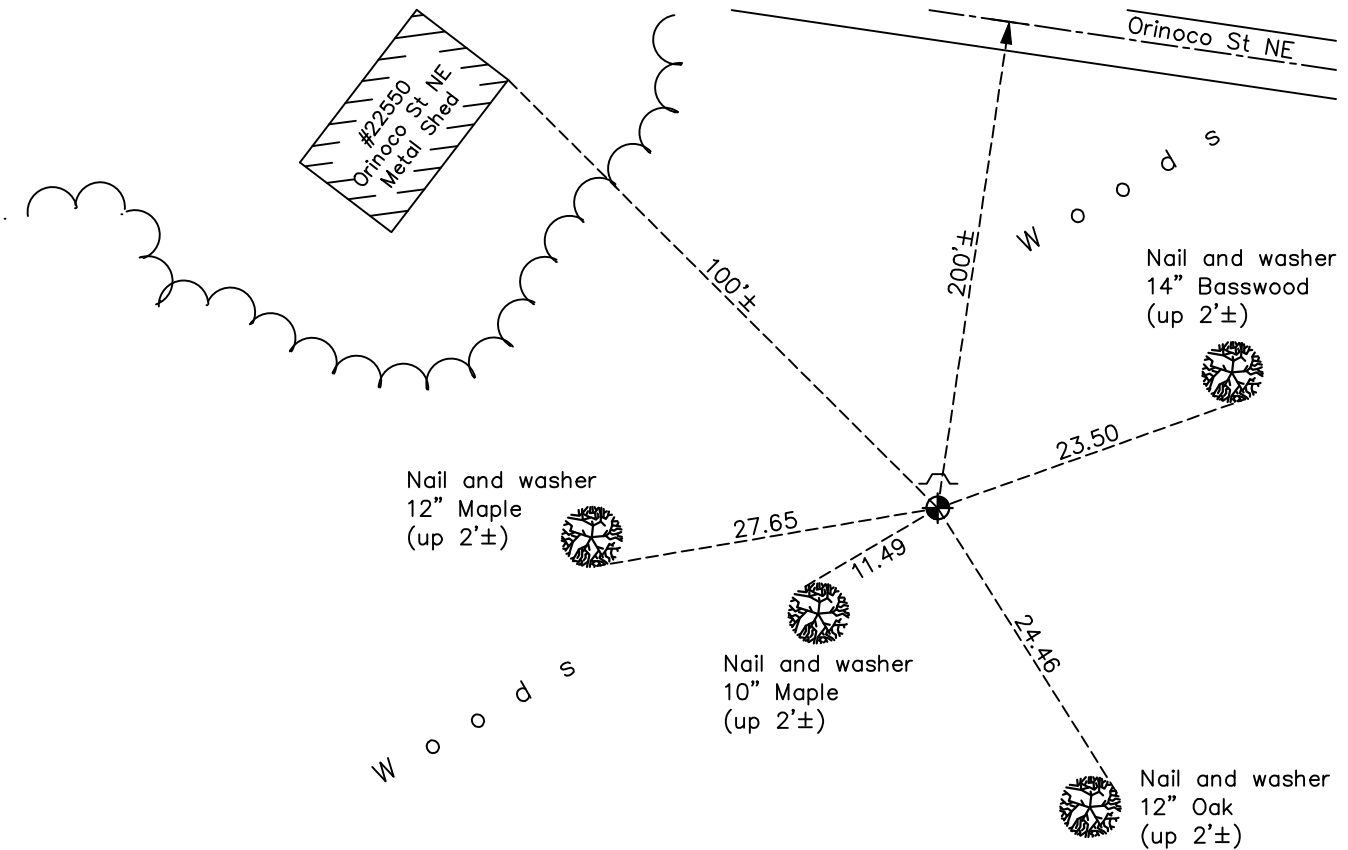
East 1/4 Corner of Sec. 4 Township 33 Range 22

On the 12th day of August, 1974, the described corner was evidenced by area resurvey

and to perpetuate the location of said corner, at the exact location thereof, a permanent marker was placed consisting of a cast iron monument with a sign and post on the north side

AND on the 17th day of December, 2021, said permanent marker was found flush and the ties were updated

Updated reference ties are as shown below.



Revision Date

03/16/22

N.A.D. 1983 Coordinates
(1996 Adjustment)

County Project Coordinates	
Northing	<u>224747.6420</u>
Easting	<u>548034.7159</u>
Date	<u>4/06/04</u>

I hereby certify that this United States public land survey monument record is correct and complete to the best of my knowledge and belief.

David Zieglmeier Date 12/11/23

David M. Zieglmeier, Anoka County Surveyor
Minnesota License Number 46179

HISTORY OF GOVERNMENT CORNER

Page No. 17

County of Anoka

State of Minnesota

East 1/4 Corner of Sec. 4 Township 33 Range 22

CORNER HISTORY:

August 12, 1974 - Set cast iron monument flush using area resurvey. Established ties to monument.

July 22, 1975 - Found cast iron monument and updated ties.

July 19, 1978 - Found cast iron monument and updated ties.

Unknown date - Found cast iron monument and updated ties.

August 23, 1984 - Found cast iron monument and updated ties.

December 26, 1990 - Found cast iron monument and updated ties.

June 30, 1993 - Found cast iron monument and updated ties.

April 6, 2004 - Established NAD 1983 (1996 adj.) Anoka County project coordinates by static GPS methods.

November 26, 2013 - Found cast iron monument and updated ties.

January 22, 2019 - Found cast iron monument and updated ties.

December 17, 2021 - Found cast iron monument flush. Verified position by VRS GPS methods. Updated ties.