

CERTIFICATE OF LOCATION OF GOVERNMENT CORNER

County of Anoka

State of Minnesota

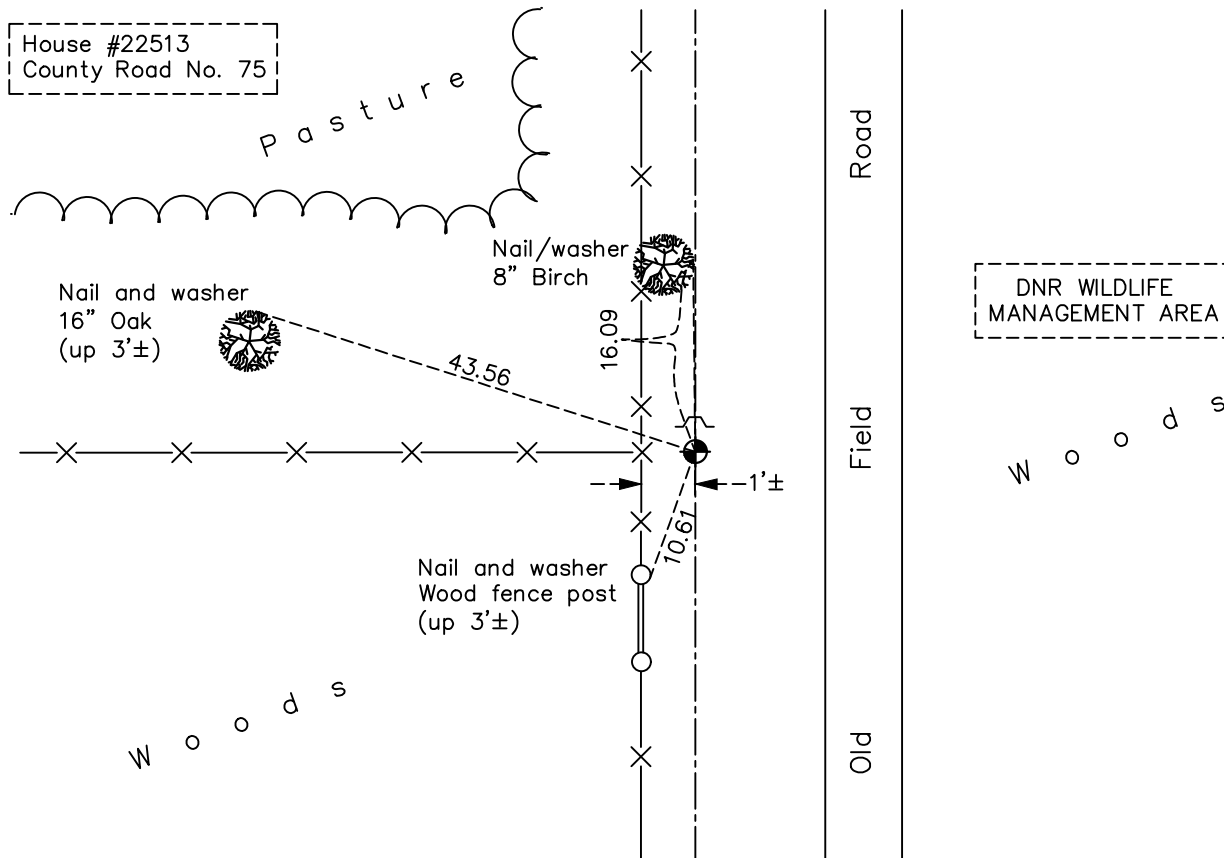
East 1/4 Corner of Sec. 2 Township 33 Range 22

On the 13th day of November, 1975, the described corner was evidenced by area resurvey

and to perpetuate the location of said corner, at the exact location thereof, a permanent marker was placed consisting of a cast iron monument with a sign and post on the north side

AND on the 18th day of February, 2022, said permanent marker was found flush and the ties were updated

Updated reference ties are as shown below.



Revision Date
03/16/22

N.A.D. 1983 Coordinates
 (1996 Adjustment)

County Project Coordinates	
Northing	<u>224650.1550</u>
Easting	<u>558502.7319</u>
Date	<u>2/22/05</u>

I hereby certify that this United States public land survey monument record is correct and complete to the best of my knowledge and belief.

David Zieglmeier Date 12/11/23

David M. Zieglmeier, Anoka County Surveyor
 Minnesota License Number 46179

HISTORY OF GOVERNMENT CORNER

County of Anoka

State of Minnesota

East 1/4 Corner of Sec. 2 Township 33 Range 22

CORNER HISTORY:

November 13, 1975 - Set cast iron monument using area resurvey. Established ties to monument.

July 19, 1978 - Found cast iron monument and updated ties.

August 24, 1981 - Found cast iron monument and updated ties.

August 28, 1984 - Found cast iron monument and updated ties.

August 19, 1987 - Found cast iron monument and updated ties.

March 27, 1991 - Found cast iron monument and updated ties.

July 17, 1995 - Found cast iron monument and updated ties.

February 22, 2005 - Found cast iron monument and updated ties.

November 20, 2013 - Found cast iron monument and updated ties.

April 19, 2019 - Found cast iron monument flush. Verified position by VRS GPS methods. Updated ties.

February 18, 2022 - Found cast iron monument flush. Verified position by VRS GPS methods. Updated ties.