

CERTIFICATE OF LOCATION OF GOVERNMENT CORNER

County of Anoka

State of Minnesota

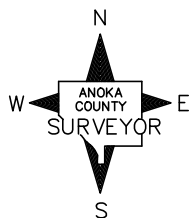
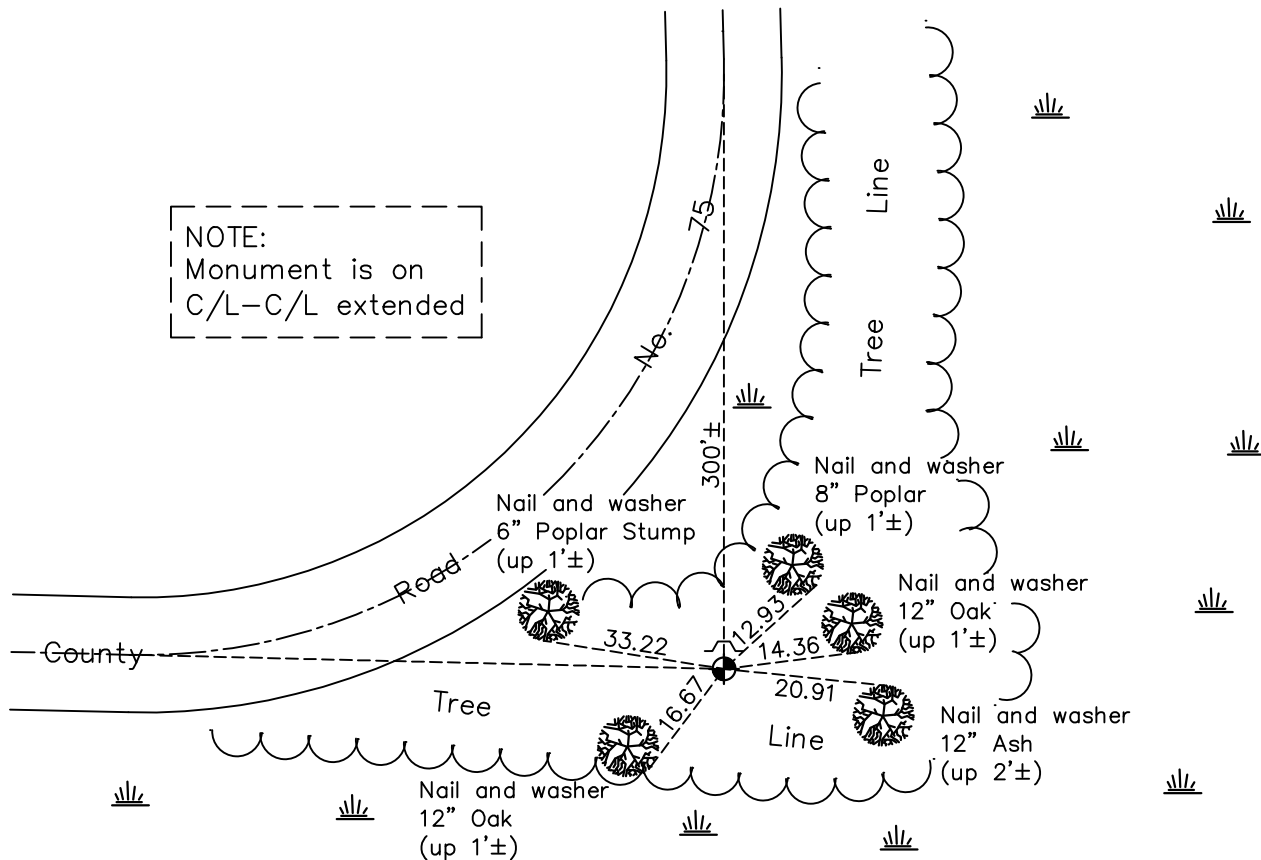
North 1/4 Corner of Sec. 11 Township 33 Range 22

On the 16th day of July, 1974, the described corner was evidenced by area resurvey

and to perpetuate the location of said corner, at the exact location thereof, a permanent marker was placed consisting of a cast iron monument with a sign and post on the north side

AND on the 23rd day of December, 2021, said permanent marker was found flush and the ties were updated

Updated reference ties are as shown below.



Revision Date
 03/16/22

N.A.D. 1983 Coordinates
 (1996 Adjustment)

County Project Coordinates	
Northing	222012.1736
Easting	555858.5843
Date	4/13/04

I hereby certify that this United States public land survey monument record is correct and complete to the best of my knowledge and belief.
David Zieglmeier Date 12/11/23
 David Zieglmeier Anoka County Surveyor
 Minnesota License Number 46179

HISTORY OF GOVERNMENT CORNER

County of Anoka

State of Minnesota

North 1/4 Corner of Sec. 11 Township 33 Range 22

CORNER HISTORY:

July 16, 1974 - Set cast iron monument using area resurvey and established ties to monument.

July 22, 1975 - Found cast iron monument and updated ties.

July 20, 1978 - Found cast iron monument and updated ties.

August 11, 1981 - Found cast iron monument and updated ties.

August 28, 1984 - Found cast iron monument and updated ties.

July 6, 1993 - Found cast iron monument and updated ties.

April 13, 2004 - Found cast iron monument, established NAD 1983 (1996 adj.) Anoka County project coordinates by static GPS methods and updated ties.

November 22, 2013 - Found cast iron monument and updated ties.

January 25, 2019 - Found cast iron monument flush and updated ties.

December 23, 2021 - Found cast iron monument flush. Verified position by VRS GPS methods. Updated ties.